



# Bemidji State Men's Basketball

Week 13: Nonconference - Finlandia

Feb. 16

## This Week

Nonconference

February 16

vs. Finlandia University

8-11 Overall

BSU Gymnasium

7 p.m.

## Next Up

Final Home Game

vs. Winona State University

Feb. 20 • 4 p.m.

## Multimedia

Live stats at home:

[http://www.bsubeavers.com/  
media/livestats/mbasketball/  
xlive.htm](http://www.bsubeavers.com/media/livestats/mbasketball/xlive.htm)

Watch all home and NSIC  
games live and for free on  
Penn Atlantic

[www.northernsun.org](http://www.northernsun.org)

## Athletic Media Relations

Dax Larson

Asst. Director/MBB Contact

[dlarson@bemidjistate.edu](mailto:dlarson@bemidjistate.edu)

Cell: (612) 718-0729

## Beavers host Finlandia in nonconference bout

**This Week:** The Bemidji State University men's basketball team hosts Finlandia University Feb. 16 at 7 p.m. in a nonconference bout at the BSU Gymnasium.

**About Bemidji State:** The Beavers are 9-14 overall and 6-11 in NSIC play for sole possession of 11th. BSU is coming off its first conference road sweep of the season and the first in head coach **Matt Bowen's** four-years at the helm, defeating Minnesota State University Moorhead 79-75 and University of Minnesota, Crookston 81-64.

- Senior **Seth Haake** scored a career-high 30 points to guide the Beavers to victory against the Dragons, then freshman **Lance Rongstad** (27) and sophomore **Bryce Tesdahl** (22) posted career-highs against the Golden Eagles.
- The Beavers shot 51.1 percent from the field against UMC, surpassing the 50 percent mark for the first time since Jan. 16.
- Senior **Seth Haake** is shooting 54.5 percent from the field this season and is ninth in the NSIC. He is shooting 47.3 percent from beyond the arc to rank fourth in the league. Haake owns a 50.2 field goal percentage and 43.0 3-point percentage in his career.
- BSU is 4th in the nation in free throw percentage at a 76.4 clip.

### PROBABLE STARTERS

No.	Name	Yr.	Pos.	Ht.	Key Stats
2	Seth Haake	Sr.	G	6-3	18.0 ppg, 4.4 rpg, 54.5 FG% <i>Has scored 20-plus points seven times this season.</i>
3	Lance Rongstad	Fr.	G	6-3	13.8 ppg, 4.5 rpg, 55.4 FG% in conf. <i>Averaged 20.0 points and 6.5 rebounds last weekend. Shot 54.5%.</i>
15	Burke Lendl	Fr.	F	6-7	2.8 ppg, 2.6 rpg, 0.6 apg <i>Started both games last weekend, averaging 28 minpg and 4.5 rpg.</i>
32	Bryce Tesdahl	So.	G/F	6-3	10.7 ppg, 5.1 rpg, 4.7 apg <i>Has 108 assists this season which is 8th on BSU's single season list-6 shy of 7th.</i>
34	Mason Walters	Fr.	G/F	6-7	6.0 ppg, 2.5 rpg, 0.8 apg <i>Averaging 16.0 minpg in conf. games, averaging 6.1 ppg and 2.6 rpg.</i>

### OFF THE BENCH

No.	Name	Yr.	Pos.	Ht.	Key Stats
11	Jake Lindstrom *	So.	G	6-0	7.2 ppg, 2.0 rpg, 87.8 FT%
12	Jon Krebs	Fr.	G	6-5	Has played in 13 games
13	Patrick Cassidy !	Jr.	F	6-6	8.3 ppg, 3.6 rpg, 50.7 FG%
25	Noah Shepherd	Fr.	G	6-2	2.4 ppg, 0.9 apg, 46.2 FG%
50	David Berthene	Fr.	F	6-9	5.1 ppg, 41.9 FG% in conf.

\* - Out for season due to injury

! - Doubtful for Tuesday's game due to injury

**About Finlandia:** The Lions are 8-11 overall and 5-7 on the road this season. Finlandia won its last game 85-59, downing Northland International at home. Senior Tyler Gordon leads the squad in scoring with 21.5 points per game, adding 6.3 rebounds per contest. He has led the team in scoring in 14 games. He stands 25th in scoring for Division III, as of Feb. 7. The Lions compete at the Division III level and have been in existence since the 1999-00 season. Finlandia is coached by Charlie Kemppainen, who is in his eighth year, owning a 71-88 record at the school. The program is not currently affiliated with a conference.

**Series History:** The Beavers are 2-0 all-time against Finlandia, winning the last contest 89-83 Nov. 29, 2001 in Hancock, Mich. The other contest took place at the BSU Gymnasium Nov. 25, 2000. BSU won that game 85-63.

**Last Action:** The Beavers went 2-0 last weekend to earn their first NSIC road sweep in four years, defeating MSU Moorhead 79-75 and Minnesota, Crookston 81-64.

**Feb. 12 - at MSU Moorhead:** Senior **Seth Haake** (G, Eden Prairie, Minn.) is making the most of his final games as a collegiate basketball player, scoring a career-high 30 points in a Bemidji State University men's basketball 79-75 win against Minnesota State University Moorhead. The Northern Sun Intercollegiate Conference game was played at Alex Nemzek Fieldhouse. The Beavers ended a four-game losing skid.

Freshman **Lance Rongstad** (G/F, Eleva, Wis.) scored the first two points of the game on two free throws, returning to the line-up after missing two games due to injury. The Beavers then maintained the lead through most of the first half, gaining a lead as large as eight at 20-12 with 9:12 remaining. The Dragons then chipped-away at the BSU lead and tied the game at 33-33 with 1:45 left in the frame. A MSUM 3-pointer gave the home team its first lead of the game. With seven seconds left, sophomore **Bryce Tesdahl** (G, Crosby, Minn.) knocked-down a jumper to head into the locker room down one at 35-36. Haake had 10 points at the half to lead the Beavers.

Haake hit the first shot of the second half to give BSU the lead. After trading quick baskets the two teams were tied 42-42, 45 seconds into the half. MSUM then went on a 13-4 run to snatch a nine-point lead with 15:12 remaining. BSU then caught fire and rattled-off 10 unanswered points to retake a one-point lead with 12:21 left. During the run, Haake scored five points to lead the four different Beavers that contributed to the stretch.

Haake scored five points on consecutive possessions to give BSU a 63-57 lead with 9:05 remaining in the half. The Beavers were able to maintain a small lead over the following three minutes, stretching it to seven on Haake's 28th and 29th points of the game that tied his career-high, making the score 70-63 with 6:19 left. MSUM wouldn't go down without a fight and went on a 7-1 run to be down just one-

## 2009-10 Schedule

Date	Opponent	Time/Result
Nov. 4	Wisconsin (exh.)	L, 54-90
Nov. 8	North Dakota (exh.)	L, 63-65
Nov. 20	College of the Ozarks !	W, 60-54
Nov. 21	Viterbo University !	W, 69-44
<b>Nov. 24</b>	<b>Jamestown College</b>	<b>L, 69-72</b>
Nov. 27	Purdue North Central ^	W, 88-60
Nov. 28	UW-Parkside ^	L, 65-78
<b>Dec. 4</b>	<b>MSU Moorhead *</b>	<b>L, 71-73</b>
<b>Dec. 5</b>	<b>Minnesota, Crookston *</b>	<b>W, 89-72</b>
Dec. 12	Winona State *	W, 88-87 OT
Dec. 13	Upper Iowa *	L, 80-91
Dec. 29	Northern Michigan	L, 75-84
<b>Jan. 2</b>	<b>Augustana College *</b>	<b>L, 73-80</b>
<b>Jan. 3</b>	<b>Wayne State (Neb.) *</b>	<b>L, 66-78</b>
Jan. 8	Concordia University *	L, 76-110
Jan. 9	St. Cloud State *	L, 69-80
<b>Jan. 15</b>	<b>Northern State *</b>	<b>L, 65-67</b>
<b>Jan. 16</b>	<b>University of Mary *</b>	<b>W, 81-59</b>
<b>Jan. 23</b>	<b>Minnesota Duluth *</b>	<b>W, 71-69</b>
Jan. 29	Minnesota State *	L, 66-108
Jan. 30	Southwest Minn. St. *	L, 67-71
<b>Feb. 5</b>	<b>Concordia University *</b>	<b>L, 73-78</b>
<b>Feb. 6</b>	<b>St. Cloud State *</b>	<b>L, 71-107</b>
Feb. 12	MSU Moorhead *	W, 79-75
Feb. 13	Minnesota, Crookston *	W, 81-64
<b>Feb. 16</b>	<b>Finlandia</b>	<b>7 p.m.</b>
<b>Feb. 20</b>	<b>Winona State *</b>	<b>4 p.m.</b>
Feb. 24	Minnesota Duluth *	8 p.m.
Feb. 27	Wayne State (Neb.) *	6 p.m.
Mar. 2	NSIC Tournament	TBA

Home games in **Bold**

\* - Northern Sun Intercollegiate Conference game

exh. - Exhibition game

! - Viterbo Pepsi Tournament (La Crosse, Wis.)

^ - UW-Parkside Tournament (Kenosha, Wis.)

point with 3:59 remaining in the game. Freshman **Burke Lendl** (F, St. Michael, Minn.) increased the lead to two with a free throw with 2:46 remaining and then junior **Patrick Cassidy** (F, St. Paul, Minn.) knocked-down a jumper to get the Beaver lead to four with 2:13 left. The Dragons created a turnover and hit a 3-pointer to cut the deficit to one with 1:34 remaining. Cassidy was fouled with 1:11 left and hit both free throws to increase the lead to three. Haake came-up big on the defensive end on the next MSUM possession with a block of what would have been a game-tying 3-pointer and Cassidy pulled-down the rebound to give BSU the ball. The Dragons created a turnover and had a chance to tie the game. They hit a jumper to cut the deficit to one at 75-76 and then immediately fouled. Cassidy was put at the line and he the first before a MSUM timeout. Cassidy came back to the line and missed the second, giving the home team 15 seconds to score. The Dragons took a jumper with seven seconds left, but missed it and Tesdahl came down with the board, his ninth of the game. MSUM was forced to foul and Tesdahl, who is the 15th-ranked free throw shooter in the nation, went to the line and drained both shots to give BSU the two-possession lead at 79-75 and only one second on the clock.

Haake tied his career-high for 3-pointers made with five, efficiently shooting a 62.5 percentage from beyond the arc. He shot 11-of-16 from the field, establishing a career-high in field goals made. He played every minute of the game. Cassidy and Tesdahl posted 14 points and Rongstad added 13. Tesdahl led the team in rebounds with nine rebounds and Rongstad added eight. Both teams shot the ball well in the game. BSU went 48.2 percent from the field and 43.8 percent from 3-point land. MSUM shot 44.4 percent from the field and 45.2 percent from beyond the arc. BSU outrebounded the Dragons 40-32, finally winning the battle of the boards after losing battle the last five games.

**Feb. 13 - at Minnesota, Crookston:** Freshman **Lance Rongstad** (G/F, Eleva, Wis.) scored a career-high 27 points and sophomore **Bryce Tesdahl** (G, Crosby, Minn.) had a career-high 22 to lead the Bemidji State University men's basketball team to an 81-64 victory at University of Minnesota, Crookston Saturday in a Northern Sun Intercollegiate Conference game. The Beavers earn a conference road sweep for the first time this season and the first time in head coach Matt Bowen's four years at BSU.

Rongstad hit a jumper on BSU's first possession to give the Beavers a 2-0 lead and the road team never looked back. With 12:52 left in the half, BSU owned a 10-point advantage at 16-6 after two free throws from Tesdahl. UMC was able to cut the deficit to five with 10:47 remaining and the scoreboard showing 18-13. The Beavers then rattled-off seven unanswered points, getting five from Tesdahl and two from freshman **David Berthene** (F, Lakeville, Minn.). The Golden Eagles then scored the next six points to cut the Beaver lead to six, with 6:13 remaining. BSU then went on lockdown on defense and held UMC to only four points to close

### **BEMIDJI STATE QUICK FACTS**

School/Enrollment:..... Bemidji State University (5,020)  
 Location/Founded:.....Bemidji, Minnesota 56601 (1919)  
 Population:.....30,000 (reflects city and surrounding area)  
 Conference:..... Northern Sun Intercollegiate  
 Affiliation:.....NCAA Division II (NCAA I-Hockey)  
 Nickname:.....Beavers  
 School Colors:..... Green (PMS 3305) and White  
 Home Court:..... BSU Gymnasium (2,500)  
 Press Row Phone:..... (218) 755-3620  
 President:.....Dr. Jon Quistgaard (Arizona '79)  
 Athletic Director:.....Dr. Rick Goeb (North Dakota St. '89)  
 Senior Woman's Administrator:.....Sarah Levesque (North Dakota '00)  
 SWA Phone:..... (218) 755 2142  
 Head Athletic Trainer:..... Bill Crews  
 Athletic Trainer Phone:..... (218) 755-2769  
 Compliance Coordinator:.....Sarah Levesque  
 Compliance Phone:..... (218) 755-2142  
 Ticket Manager:.....Pam Papp  
 Tickets Phone:..... (218) 755-3993  
 Athletics Administrative Assistant:.....Debbie Slough  
 Athletic Phone:..... (218) 755-2941  
 Athletic Fax:..... (218) 755-3898

### **ATHLETIC MEDIA RELATIONS**

Director:.....Brad Folkestad (Bemidji State '01)  
 AMR Phone:..... (218) 755-4603  
 AMR Fax:..... (218) 755-3898  
 AMR Cell:..... (218) 308-1115  
 AMR Email:..... bfolkestad@bemidjistate.edu  
 Assistant AMR/Basketball:.....Dax Larson (Minnesota State '07)  
 Assistant Phone:..... (218) 755-2763  
 Assistant Cell:..... (612) 718-0729  
 Assistant Email:..... dl Larson@bemidjistate.edu  
 Graduate Assistant:.....Ross LaDue (Iowa State '09)  
 Graduate Assistant Email:..... gladue@bemidjistate.edu  
 Volleyball/Basketball Press Row:..... (218) 755-3620  
 Web site:..... www.bemidjistate.edu/athletics

### **PROGRAM HISTORY**

First year of men's basketball:..... 1921  
 Overall record (87 seasons):..... 893-1,026 (.465)  
 Years in post-season play:.....5 (NAIA)  
 (National - 1940, 1941, 1942; District - 1984, '85)  
 ..... 1 (NCAA)  
 (North Central Regional - 2004)  
 Northern Intercollegiate (NIC) Championships:..... 8  
 .... (1940, 1941, 1942, 1951, 1952, 1954, 1957, 1967)  
 Northern Sun Intercollegiate (NSIC) Championships:..... 1 (2004)

### **COACHING STAFF**

Head Coach:.....Matthew Bowen (Indiana, 1995)  
 Men's Basketball Office Phone:..... (218) 755-2774  
 Record at School:..... 28-83 - Fourth season  
 Career Record:..... 28-83 - Fourth season  
 Assistant Coaches:..... Jeremy Tiers (Lakehead University '98)  
 Ryan Montgomery (Hamline University '06)

### **TEAM INFORMATION**

2008-09 Record:.....8-19 (6-14 NSIC, T-10th)  
 Starters Returning/Lost:..... 4/1  
 Letterwinner Returning/Lost:..... 8/5  
 Newcomers..... 7

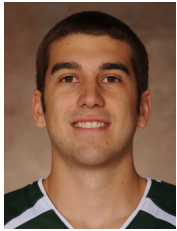
the half, while scoring 18 points from all areas of the floor, owning a 43-23 lead at the break. The Beavers shot 61.9 percent from the field in the first half and converted on 14-of-15 free throws. Rongstad had 17 of his 26 in the first half and Tesdahl had accumulated 15 points, six from the charity stripe.

The Beavers stretched their lead to 26 at 57-31 with 15:46 showing on the scoreboard, getting a 3-point bucket from senior **Seth Haake** (G, Eden Prairie, Minn.). The home team didn't throw in the towel and worked its way back to a 12-point deficit with 8:45 remaining in regulation and the score at 64-52. Despite the soaring Golden Eagles' effort, BSU wasn't going to let the win get away and went on a 12-6 run to take an 18-point lead with 4:16 left. The Beaver lead never let the lead go below 16 for the rest of the contest, en route to the 81-64 victory.

Rongstad tied a career-high in field goals made with eight, established career-highs in free throws made (10) and free throws attempted (11). Tesdahl went a perfect 6-of-6 from the field, 1-for-1 from 3-point land and 9-for-11 from the free throw line, while tying a career-high with five steals. Haake scored 16 points and had a team-high six rebounds. The Beavers shot 51.1 percent from the field, surpassing the 50 percent mark for the first time since Jan. 16. From the free throw line, BSU was 29-of-34 (85.3%). The Beavers had 13 steals to tie their season-high.

**NSIC Preseason Poll:** The Bemidji State men's basketball team is ranked ninth in the 2009-10 edition of the Northern Sun Intercollegiate Conference Preseason Coaches' Poll, receiving 89 points. The Beavers are coming off a year where they finished tied for 10th in the NSIC with a 6-14 record.

**NSIC Preseason Player to Watch:** Senior guard **Seth Haake** (Eden Prairie, Minn.) played and started in all 27 games for the Beavers in 2008-09, leading the team in points (13.9 p/g), rebounds (4.7 r/g), minutes (30.4 m/g) and steals (1.7 s/g), while finishing second on the team in assists (2.0 a/g). His 13.9 points per game was the most by a Beaver player since 2003-04 and ranked 12th in overall scoring in the NSIC. Haake earned his first career *NSIC Player of the Week* award after leading BSU in a 3-0 week, Jan. 6-10, which included wins over Dickinson State, Concordia University and St. Cloud State. He averaged 20.0 points, 6.7 rebounds and shot 60 percent from the floor in the three games. In NSIC play he averaged 13.9 points, 4.6 rebounds, 2.25 assists and shot .526 from the floor. Haake had a team-high 20 games in double-figures in scoring, including six games with over 20 points.



**Bowen in Season Openers:** Head coach **Matt Bowen** earned his first victory in season openers in his four seasons at BSU on Nov. 20. The Beavers defeated College of the Ozarks 60-54 at the Viterbo University Pepsi Tournament.

#### Season Opener Record

Date	Opponent	Site	Result
11/20/09	College of the Ozarks	La Crosse, Wis.	W, 60-54
11/18/08	Jamestown College	Bemidji, Minn.	L, 52-53
11/16/07	St. Cloud State	St. Cloud, Minn.	L, 61-86
11/15/06	Minnesota Duluth	Duluth, Minn.	L, 59-90

**Grand Accomplishment:** With a free throw with 4:38 remaining in a 71-69 win Jan. 23 against Minnesota Duluth, senior **Seth Haake** scored his 1,000th point of his career. He is the first Beaver to accomplish the feat since All-America selection Charles Hanks did so from 2001-04. He has 1,115 points in his career. He is 75 points shy of cracking BSU's top 10 career scoring list.

**Making his mark on the NSIC:** Haake has 849 career points in NSIC play to rank 16th on the conference's career scoring chart. He joins Hanks (5th, 1,021) and David Lee (1984-88, 14th, 854) as players from BSU represented on the list.

**Making Strides:** Head coach **Matt Bowen** has increased BSU's win total every season over his past four years. The Beavers won five games in his first campaign, then six in his second and eight in 2008-09. This season, BSU already has nine wins with four games remaining.

**Two is Better than One:** Sophomore **Bryce Tesdahl** (G, Crosby, Minn.) posted 20 points, 11 assists and nine rebounds in a 88-87 overtime victory against No. 17 Winona State University Dec. 12, posting the first double-double of his career and the first by Beaver in 2009-10. Both the point and assist totals were career-highs and the nine rebounds tied a career-high.

**Thanks for the Charity:** Tesdahl is 87-of-99 from the charity stripe this season, posting a 87.9 percentage from the line that stands fourth in the NSIC and 20th in the nation. BSU is first in the conference (76.4) this season in free throw percentage, standing 4th in the nation.

**Helping Hand:** With 15.0 assists per game in conference play this season, the Beavers are tied for fifth in the league. Winona State is first at 17.94 apg. Tesdahl has 4.9 assists per game in league games, which is fourth. With 4.7 apg in all games, Tesdahl is fifth in the league and 55th in the nation. Tesdahl has 108 assists this season to stand 8th on BSU's top season assists list. His 193 career assists ranks 9th on BSU's career list (1976-present).

#### **BSU's Top Season Assists**

<b>#</b>	<b>Assists</b>	<b>Player</b>	<b>Season</b>	<b>Avg.</b>
1.	167	James Roberson	2003-04	5.6
2.	145	Royce Bryan	2001-02	5.1
3.	142	Tyrone Terrill	1975-76	5.9
4.	135	James Roberson	2004-05	5.0
5.	129	Kevin Nichols	1993-94	5.0
6.	124	Mike Curry	1995-96	4.6
7.	114	Stan Johnson	2002-03	4.1
8.	<b>108</b>	<b>Bryce Tesdahl</b>	<b>2009-10</b>	<b>4.9</b>

#### **BSU's Top Career Assist Totals (1976-Present)**

<b>#</b>	<b>Assists</b>	<b>Player</b>	<b>Seasons</b>
1.	314	David Lee	1984-88
2.	302	James Roberson	2003-05
3.	247	Royce Bryan	2002-03
	247	Tony Brown	1987-91
5.	233	Teaser Sweeney	1989-93
6.	212	B.J. LaVelle	1996-99
7.	207	Brian Weierke	1987-91
8.	200	Kevin Nichols	1991-92, '93-94
9.	<b>193</b>	<b>Bryce Tesdahl</b>	<b>2008-SA</b>

**Andrew Jackson:** Senior **Seth Haake** scored in the 20's four consecutive games Dec. 12-Jan. 2, pouring in a then season-high 27 against Northern Michigan Dec. 29. He scored 23 against UMD Jan. 23 for his fifth and posted 26 in a loss to Concordia University, Feb. 5 for his sixth. With a career-high 30 against MSUM Feb. 12, he posted is seventh 20-plus and first 30-plus point performance of the season and his career.

**National Ranking:** In the NCAA national ranking summary from games thru Feb. 14, BSU is 4th in free throw percentage at a 76.4 clip. The Beavers are also in the top 63 (270 ranked) in, field goal percentage

(52nd, 47.5 percent), turnovers per game (59th, 13.5 tpg) and assist to turnover ratio (63rd, 1.08 ratio). Sophomore **Bryce Tesdahl** is 20th in free throw percentage at a 87.9 mark and stands 55th in assists per game with 4.7 per contest. He is also 59th in assist to turnover ratio with a 2.04 mark. Senior **Seth Haake** is 60th in field goal percentage with a 54.5 mark and is 73rd in points per game with 18.0 ppg.

**Young Look:** The Beavers' active roster of 10 student-athletes consists of six true freshman, with only two upperclassmen. That makes 80 percent of the roster underclassmen. Last season, head coach **Matt Bowen** and his staff had to deal with 75 percent of the roster as underclassmen. In his first season (2006-07) Bowen inherited a team that had 7-of-12 (58%) players as upperclassmen. His second year balanced out at 52 percent underclassmen and 48 percent upperclassmen.

**Work Horses:** Four of the regular starters for the Beavers have logged at least 25.8 minutes per game in conference play this season, placing three of them in the top 30 in the conference rankings for minutes per game. Freshman **Lance Rongstad** has logged the second most minutes by a freshman this season with 28.5 minpg.

<b>Player</b>	<b>GP/GS</b>	<b>Rk</b>	<b>MPG</b>
Seth Haake	17/17	7	34.1
Bryce Tesdahl	17/17	10	33.5
Lance Rongstad	15/13	25	28.5
Patrick Cassidy	17/17	---	25.8

**It's Been a Long Time:** The Beavers earned an NSIC road sweep, Feb. 12-13, for the first time since the 2004-05 season. BSU defeated MSU Moorhead 79-75 before traveling to Minnesota, Crookston and winning 81-64. Senior **Seth Haake** scored a career-high 30 points to guide the Beavers to victory against the Dragons, then freshman **Lance Rongstad** (27) and sophomore **Bryce Tesdahl** (22) posted career-highs against the Golden Eagles.

[Contact Us](#)

## Bemidji St. (9-14)

### Men's Basketball National Ranking Summary Thru Games 02/14/2010

[Back to team selections](#)  
[Northern Sun - All Teams](#)

Category	Rank	Actual	National Leader	Actual
Won-Lost Percentage (270 ranked)	195	39.1	<a href="#">Arkansas Tech Southern Ind.</a>	100.0 100.0
Scoring Offense (270 ranked)	125	73.6	<a href="#">West Liberty</a>	106.4
Scoring Defense (270 ranked)	223	76.6	<a href="#">Clark Atlanta</a>	53.8
Scoring Margin (270 ranked)	197	-3.0	<a href="#">West Liberty</a>	27.5
Field-Goal Percentage (270 ranked)	52	47.5	<a href="#">Quincy</a>	52.0
Field-Goal Percentage Defense (270 ranked)	230	46.6	<a href="#">St. Augustine's</a>	36.2
Three-Point Field Goals Per Game (270 ranked)	129	6.3	<a href="#">West Liberty</a>	13.5
Three-Point Field-Goal Percentage (214 ranked)	83	35.8	<a href="#">Fla. Southern</a>	44.8
Three Pt FG Defense (270 ranked)	252	38.0	<a href="#">Johnson C. Smith</a>	25.5
Free-Throw Percentage (270 ranked)	4	76.4	<a href="#">Adelphi</a>	78.4
Rebound Margin (270 ranked)	195	-1.7	<a href="#">Oakland City</a>	12.7
Assists Per Game (270 ranked)	95	14.5	<a href="#">West Liberty</a>	24.3
Assist Turnover Ratio (270 ranked)	63	1.08	<a href="#">West Liberty</a>	1.8
Blocked Shots Per Game (270 ranked)	235	2.0	<a href="#">Bowie St.</a>	7.0
Steals Per Game (270 ranked)	205	6.3	<a href="#">Mars Hill</a>	12.5
Turnovers Per Game (270 ranked)	59	13.5	<a href="#">Mary</a>	9.6
Turnover Margin (270 ranked)	160	-0.6	<a href="#">West Liberty</a>	7.8
Personal Fouls Per Game (270 ranked)	161	19.3	<a href="#">Quincy</a>	13.3

Category	Player	Rank	Actual	National Leader	Actual
Points Per Game (500 ranked)	<a href="#">Seth Haake</a>	73	18.0	<a href="#">Stephen Dennis, Kutztown</a>	27.5
Field-Goal Percentage (264 ranked)	<a href="#">Seth Haake</a>	60	54.5	<a href="#">Dion Malachi, Mars Hill</a>	68.0
Three-Point Field Goals Per Game (500 ranked)	<a href="#">Seth Haake</a>	109	2.3	<a href="#">Jamar Board, Alderson-Broaddus</a>	5.2
Three-Point Field-Goal Percentage (71 ranked)				<a href="#">Keaton Shultz, Newman</a>	55.5
Free-Throw Percentage (483 ranked)	<a href="#">Bryce Tesdahl</a> <a href="#">Seth Haake</a>	20 136	87.9 79.5	<a href="#">Alex Hall, Drury</a>	93.9
Rebounds Per Game (500 ranked)	<a href="#">Bryce Tesdahl</a>	447	5.1	<a href="#">Nathan Schumacher, Oakland City</a>	14.3
Assists Per Game (500 ranked)	<a href="#">Bryce Tesdahl</a> <a href="#">Seth Haake</a>	55 466	4.7 2.3	<a href="#">D.J. Ferguson, Flagler</a>	9.6
Blocked Shots Per Game (500 ranked)				<a href="#">Marcus Connor, St. Andrews</a>	4.5
Steals Per Game (500 ranked)	<a href="#">Seth Haake</a>	136	1.7	<a href="#">Terrell Eargle, Alderson-Broaddus</a>	3.7
Assist Turnover Ratio (257 ranked)	<a href="#">Bryce Tesdahl</a>	59	2.04	<a href="#">Alex Moosmann, CMOSt</a>	4.67

**Beavers in the NSIC  
(Overall)**

**Scoring**

1 David Johnson (WSU)	20.0
<b>3 Seth Haake</b>	<b>18.0</b>
<b>23 Lance Rongstad</b>	<b>11.6</b>

**Rebounding**

1 Matt Schneck (SCSU)	10.7
<b>13 Bryce Tesdahl</b>	<b>5.1</b>

**Field Goal Percentage**

1 Jefferson Mason (MSU)	64.2
<b>9 Seth Haake</b>	<b>54.5</b>
<b>12 Lance Rongstad</b>	<b>52.1</b>

**Free Throw Percentage**

1 Mitch Boeck (NSU)	92.0
<b>4 Bryce Tesdahl</b>	<b>87.9</b>
<b>13 Seth Haake</b>	<b>79.5</b>

**3-point Field Goal Percentage**

1 Isaiah Thomas (CU)	51.9
<b>4 Seth Haake</b>	<b>47.3</b>

**3-Point Field Goals Made**

1 Derek Hoellein (NSU)	71, 3.09
<b>8 Seth Haake</b>	<b>52, 2.26</b>

**Assists**

1 Ben Fischer (WSU)	7.68
<b>5 Bryce Tesdahl</b>	<b>4.70</b>

**Steals**

1 Jordan Dalton (AUGIE)	2.13
<b>3 Seth Haake</b>	<b>1.74</b>

**Assist/Turnover Ratio**

1 Jesse Clark (MSU)	3.73
<b>6 Bryce Tesdahl</b>	<b>2.04</b>

**Minutes Played**

1 Anthony Moody (Mary)	36.7
<b>6 Bryce Tesdahl</b>	<b>33.26</b>
<b>10 Seth Haake</b>	<b>31.74</b>

**COMPARISON**

**FINLANDIA**

78.1	◀
74.5	◀
67.1	
46.1	
36.3	◀
-0.9	◀
2.5	◀
15.8	◀
-0.2	◀

**BEMIDJI STATE**

SCORING OFFENSE	73.6
SCORING DEFENSE	76.6
FREE THROW %	76.4
FIELD GOAL %	47.5
3-POINT FG %	35.8
REBOUNDING MARGIN	-1.7
BLOCKED SHOTS	2.0
ASSISTS	14.5
TURNOVER MARGIN	-0.6

**Beavers in the NSIC  
(Conference Only)**

**Scoring**

1 Anthony Moody (MARY)	21.1
<b>3 Seth Haake</b>	<b>19.1</b>
<b>17 Lance Rongstad</b>	<b>13.8</b>
<b>24 Bryce Tesdahl</b>	<b>11.6</b>

**Rebounding**

1 Brett Spiker (WSC)	10.9
<b>11 Bryce Tesdahl</b>	<b>5.6</b>
<b>20 Lance Rongstad</b>	<b>4.5</b>

**Field Goal Percentage**

1 Brian Metz (WSC)	65.5
<b>8 Lance Rongstad</b>	<b>55.4</b>
<b>13 Seth Haake</b>	<b>53.6</b>

**Free Throw Percentage**

1 Marcus Hill (MSU)	92.3
<b>5 Jake Lindstrom</b>	<b>88.6</b>
<b>8 Bryce Tesdahl</b>	<b>85.9</b>

**Steals**

1 Jefferson Mason (MSU)	2.06
<b>3 Seth Haake</b>	<b>1.82</b>

**3-point Field Goal Percentage**

1 Jon Walburg (WSU)	57.8
<b>3 Seth Haake</b>	<b>48.8</b>

**3-point Field Goals Made**

1 Derek Hoellein (NSU)	53, 3.31
<b>6 Seth Haake</b>	<b>42, 2.47</b>

**Assists**

1 Ben Fischer (WSU)	8.00
<b>4 Bryce Tesdahl</b>	<b>4.94</b>

**Assist/Turnover Ratio**

1 Jordan Dalton (Augie)	3.86
<b>6 Bryce Tesdahl</b>	<b>2.27</b>

**Minutes Played**

1 Anthony Moody (Mary)	39.0
<b>7 Seth Haake</b>	<b>34.12</b>
<b>10 Bryce Tesdahl</b>	<b>33.53</b>
<b>25 Lance Rongstad</b>	<b>28.47</b>

\* To be ranked, a player must appear in at least 75.0% of their team's games.

**BEAVERS' 2009-10 RECORD WHEN...**

<b>MONTH</b>	
Plays in November .....	3-2
Plays in December .....	2-3
Plays in January .....	2-7
Plays in February .....	2-2
Plays in March .....	0-0

<b>DAY OF THE WEEK</b>	
Plays on Sunday .....	0-2
Plays on Monday .....	0-0
Plays on Tuesday .....	0-2
Plays on Wednesday .....	0-0
Plays on Thursday .....	0-0
Plays on Friday .....	3-5
Plays on Saturday .....	6-5

<b>TIME OF DAY</b>	
Plays during the day (Before 6 p.m.) .....	5-4
Plays at night .....	4-10

<b>LOCATION</b>	
Plays at home .....	3-7
Plays on the road .....	4-7
Plays at a neutral site .....	2-0

<b>CONFERENCE</b>	
Record vs. the NSIC .....	6-11
Nonconference opponents .....	3-3
In Region .....	6-11
vs. NAIA or Division III .....	3-1

<b>HALFTIME SCORE</b>	
Leads at half .....	7-5
Trails at half .....	2-9
Tied at half .....	0-0

<b>MARGIN</b>	
Margin is 5 points or less .....	3-5
Margin is 10 points or less .....	1-2
Margin is between 11-20 .....	2-4
Margin is more than 20 .....	3-3

<b>POINTS SCORED</b>	
Scores 59 points or less .....	0-0
Scores 60+ points .....	2-7
Scores 70+ points .....	2-6
Scores 80+ points .....	5-1
Scores 90+ points .....	0-0
Scores 100+ points .....	0-0

<b>SHOOTING</b>	
Shoots 50% or better .....	5-2
Shoots less than 50% .....	3-11
Opponent shoots 50% or less .....	8-7
Shoots better than opponent .....	8-5
Shoots worse than opponent .....	1-9

<b>FREE THROWS</b>	
Has more FTs made than opponent .....	7-5
Has equal FTs made than opponent .....	0-2
Has less FTs made than opponent .....	2-7

<b>REBOUNDING</b>	
More rebounds than opponent .....	6-2
Less rebounds than opponent .....	2-12
Has equal rebounds .....	1-0

<b>TURNOVERS</b>	
Has more TOs than opponent .....	5-7
Has equal or less TOs than opponent .....	4-7

<b>MISCELLANEOUS</b>	
vs. Nationally-ranked opponent .....	1-2
In tournament play .....	3-1
Plays an overtime game .....	1-0
Win the game before .....	4-4
Loses the game before .....	4-10
Makes 5+ 3-point shots .....	9-8
Has 20+ assists .....	3-0
Has a 20-plus-point scorer .....	5-5
Has equal/more bench points .....	4-2
Has less bench points .....	3-14

**DOUBLE-DOUBLES**

Player	Opponent (Date)	Points	Rebs.	Assts
Bryce Tesdahl	Winona State (12/12)	20	---	11

**Breakdown:** Tesdahl (1) - **Total:** 1**30-POINT GAMES**

Player	Opponent (Date)	Points
Seth Haake	MSU Moorhead (2/12)	30

**Breakdown:** Haake (1) - **Total:** 1**20-POINT GAMES**

Player	Opponent (Date)	Points
Patrick Cassidy	MSU Moorhead (12/4)	20
Bryce Tesdahl	Minnesota, Crookston (12/5)	20
Seth Haake	Winona State (12/12)	25
Bryce Tesdahl	Winona State (12/12)	20
Seth Haake	Upper Iowa (12/13)	21
Seth Haake	Northern Michigan (12/29)	27
Seth Haake	Augustana (1/2)	24
Seth Haake	Minnesota Duluth (1/23)	23
Seth Haake	Concordia University (2/5)	26
Lance Rongstad	Minnesota, Crookston (2/13)	27
Bryce Tesdahl	Minnesota, Crookston (2/13)	22

**Breakdown:** Cassidy (1), Haake (6), Rongstad (1) Tesdahl (3) - **Total:** 11**10-REBOUND GAMES**

Player	Opponent (Date)	Rebounds
Bryce Tesdahl	University of Mary (1/16)	10
Burke Lendl	Concordia University (2/5)	10

**Breakdown:** Lendl (1), Tesdahl (1) - **Total:** 2**10-ASSIST GAMES**

Player	Opponent (Date)	Assists
Bryce Tesdahl	Winona State (12/12)	11

**Breakdown:** Tesdahl (1) - **Total:** 1**5-BLOCK GAMES**

Player	Opponent (Date)	Blocks
None		

**Breakdown:** None - **Total:** 0**5-STEAL GAMES**

Player	Opponent (Date)	Steals
Seth Haake	St. Cloud State (1/9)	5
Bryce Tesdahl	Minnesota, Crookston	5

**Breakdown:** Haake (1), Tesdahl (1) - **Total:** 2

# Bemidji State Player Season/Career Highs

## #2 Seth Haake • Sr. • G • 6-3 • 176 • Eden Prairie, Minn.

Season	Career
<b>Points:</b> 30 at MSU Moorhead (2/12)	30 at MSU Moorhead (2/12/10)
<b>FG made:</b> 11 at MSU Moorhead (2/12)	11 at MSU Moorhead (2/12/10)
<b>FG attempts:</b> 17, 3x, last at SW Minnesota State (1/30)	19 at Northern State (1/16/09)
<b>3Pt FG made:</b> 5, 2x, last at MSU Moorhead (2/12)	5, 2x, last at MSU Moorhead (2/12/10)
<b>3Pt FG attempts:</b> 9 at Winona State (12/12)	9 at Winona State (12/12/09)
<b>FT made:</b> 7 vs. Augustana (1/2)	12 vs. Wayne State (2/28/09)
<b>FT attempts:</b> 9 vs. Augustana (1/2)	13 vs. Wayne State (2/28/09)
<b>Rebounds:</b> 8 at Viterbo (11/21)	8, 2x, last time at Viterbo (11/21/09)
<b>Assists:</b> 7, 2x, last vs. University of Mary (1/16)	7, 2x, last vs. University of Mary (1/16/10)
<b>Steals:</b> 5 at St. Cloud State (1/9)	5, 3x, last time at St. Cloud State (1/9/10)
<b>Blocked Shots:</b> 2, 2x, last at MSU Moorhead (2/12)	2, 3x, last at MSU Moorhead (2/12/10)
<b>Minutes:</b> 40, 2x, last at MSU Moorhead (2/12)	48 at Northern State (1/16/09)

## #13 Patrick Cassidy • Jr. • F • 6-6 • 209 • St. Paul, Minn.

Season	Career
<b>Points:</b> 20 vs. MSU Moorhead (12/4)	26 vs. Minnesota Duluth (2/25/09)
<b>FG made:</b> 8 vs. MSU Moorhead (12/4)	11, 2x, last vs. Minnesota Duluth (2/25/09)
<b>FG attempts:</b> 12, 2x, last vs. MSU Moorhead (12/4)	16 vs. Minnesota Duluth (2/25/09)
<b>3Pt FG made:</b> 1 vs. MSU Moorhead (12/4)	3 at MSU Moorhead (12/7/07)
<b>3Pt FG attempts:</b> 5 vs. MSU Moorhead (12/4)	5 vs. MSU Moorhead (12/4/09)
<b>FT made:</b> 4, 2x, last at MSU Moorhead (2/12)	7 vs. Northern College (11/25/07)
<b>FT attempts:</b> 8 at MSU Moorhead (2/12)	8, 2x, last at MSU Moorhead (2/12/10)
<b>Rebounds:</b> 7, 2x, last at MSU Moorhead (2/12)	13 vs. Minnesota, Crookston (12/12/09)
<b>Assists:</b> 4 at Northern Michigan (12/29)	4, 3x, last at Northern Michigan (12/29/09)
<b>Steals:</b> 2, 3x, last vs. Concordia University (2/6/10)	2, 8x, last vs. Concordia Univ., St. Paul, (2/5/10)
<b>Blocked Shots:</b> 2, 2x, last at Upper Iowa (12/13)	2, 4x, last at Upper Iowa (12/13/09)
<b>Minutes:</b> 36 at Winona State (12/12)	47 vs. Minnesota Duluth (2/25/09)

## #11 Jake Lindstrom • So. • G • 6-0 • 175 • Cottage Grove, Minn.

Season	Career
<b>Points:</b> 14 at Upper Iowa (12/13)	25 vs. UW-River Falls (12/20/08)
<b>FG made:</b> 5 at Northern Michigan (12/29)	8 vs. UW-River Falls (12/20/08)
<b>FG attempts:</b> 11 at Northern Michigan (12/29)	21 vs. UW-RF (12/20/08)
<b>3Pt FG made:</b> 3 at Northern Michigan (12/29)	3, 5x, last at Northern Michigan (12/29/09)
<b>3Pt FG attempts:</b> 7 at Northern Michigan (12/29)	10 at Dickinson State (1/6/09)
<b>FT made:</b> 4, 4x, last vs. Concordia University (2/5)	8 at Minnesota Duluth (2/25/09)
<b>FT attempts:</b> 5 at Minnesota State (1/29)	10 at Concordia University (1/9/09)
<b>Rebounds:</b> 6 vs. Minnesota, Crookston (12/5)	7 at Dickinson State (1/6/09)
<b>Assists:</b> 6 at Upper Iowa (12/13)	6 at Upper Iowa (12/13/09)
<b>Steals:</b> 4 vs. Minnesota, Crookston (12/5)	4 vs. Minnesota, Crookston (12/5/09)
<b>Blocked Shots:</b> 1 at Concordia University (1/8)	1, 7x, last at Concordia University (1/8/10)
<b>Minutes:</b> 34 at Upper Iowa (12/13)	47 at Dickinson State (1/6/09)

## #32 Bryce Tesdahl • So. • G • 6-3 • 195 • Crosby, Minn.

Season	Career
<b>Points:</b> 22 at Minnesota, Crookston (2/13)	22 at Minnesota, Crookston (2/13/10)
<b>FG made:</b> 6, 2x, last at Minnesota, Crookston (2/13)	6, 3x, last at Minnesota, Crookston (2/13/10)
<b>FG attempts:</b> 11 at Winona State (12/12)	11, 2x, last at Winona State (12/12/09)
<b>3Pt FG made:</b> 3 at Northern Michigan (12/29)	3 at Northern Michigan (12/29/09)
<b>3Pt FG attempts:</b> 6 at Northern Michigan (12/29)	6 at Northern Michigan (12/29/09)
<b>FT made:</b> 10 vs. College of Ozarks (11/20)	10 vs. College of Ozarks (11/20/09)
<b>FT attempts:</b> 11 at Minnesota, Crookston (2/13)	11 at Minnesota, Crookston (2/13/10)
<b>Rebounds:</b> 10 vs. University of Mary (1/16)	10 vs. University of Mary (1/16/10)
<b>Assists:</b> 11 at Winona State (12/12)	11 at Winona State (12/12/09)
<b>Steals:</b> 5 at Minnesota, Crookston (2/13)	5, 2x, last at Minnesota, Crookston (2/13/10)
<b>Blocked Shots:</b> 1, 2x, last vs. Northern State (1/15)	1, 6x, last vs. Northern State (1/15/10)
<b>Minutes:</b> 43 at Winona State (12/12)	43, 2x, at Winona State (12/12/09)

## #50 David Berthene • Fr. • F 6-9 • 185 • Lakeville, Minn.

<b>Points:</b> 17 vs. Minnesota, Crookston (12/5)
<b>FG made:</b> 7 vs. Minnesota, Crookston (12/5)
<b>FG attempts:</b> 11 vs. Minnesota, Crookston (12/5)
<b>3Pt FG made:</b> 3 vs. Minnesota, Crookston (12/5)
<b>3Pt FG attempts:</b> 5, 2x, last vs. Minnesota, Crookston (12/5)
<b>FT made:</b> 4 vs. University of Mary (1/16)
<b>FT attempts:</b> 4 vs. University of Mary (1/16)
<b>Rebounds:</b> 3, 2x, last vs. St. Cloud State (2/6)
<b>Assists:</b> 3 vs. MSU Moorhead (12/4)
<b>Steals:</b> 1, 3x, last at Minnesota, Crookston (2/13)
<b>Blocked Shots:</b> 1, 5x, last vs. Minnesota Duluth (1/23)
<b>Minutes:</b> 31 vs. Minnesota, Crookston (12/5)

## #12 Jon Krebs • Fr. • G 6-5 • 184 • Mahtomedi, Minn.

<b>Points:</b> 6 at Minnesota State (1/29)
<b>FG made:</b> 2 at Minnesota State (1/29)
<b>FG attempts:</b> 6 at Concordia University (1/8)
<b>3Pt FG made:</b> none
<b>3Pt FG attempts:</b> 3 at Concordia University (1/8)
<b>FT made:</b> 2, 2x, last at Minnesota State (1/29)
<b>FT attempts:</b> 2, 3x, last at SW Minnesota State (1/30)
<b>Rebounds:</b> 8 at Concordia University (1/8)
<b>Assists:</b> 1, 2x, vs. Concordia University (2/5)
<b>Steals:</b> 1 at Minnesota State (1/29)
<b>Blocked Shots:</b> none
<b>Minutes:</b> 14 at Minnesota State (1/29)

## #15 Burke Lendl • Fr. • F

Season	Career
<b>Points:</b> 6, 2x, last vs. Concordia Univ., St. Paul (2/5)	6-7 • 188 • St. Michael, Minn.
<b>FG made:</b> 3 vs. Concordia Univ., St. Paul (2/5)	
<b>FG attempts:</b> 6, 2x, last at MSU Moorhead (2/12)	
<b>3Pt FG made:</b> 1, 5x, last at SW Minnesota State (1/30)	
<b>3Pt FG attempts:</b> 2, 2x, last at SW Minnesota State (1/30)	
<b>FT made:</b> 2, 4x, last at Minnesota State (1/29)	
<b>FT attempts:</b> 4 at Minnesota State (1/29)	
<b>Rebounds:</b> 10 vs. Concordia Univ., St. Paul (2/5)	
<b>Assists:</b> 4 at MSU Moorhead (2/12)	
<b>Steals:</b> 2, 3x, last at Minnesota, Crookston (2/13)	
<b>Blocked Shots:</b> 1, 4x, last vs. Concordia University (2/5)	
<b>Minutes:</b> 33 at MSU Moorhead (2/12)	

## #3 Lance Rongstad • Fr. • G

Season	Career
<b>Points:</b> 27 at Minnesota, Crookston (2/13)	6-3 • 200 • Eleva, Wis.
<b>FG made:</b> 8, 2x, last at Minnesota, Crookston (2/13)	
<b>FG attempts:</b> 15, 2x, last vs. Minnesota Duluth (1/23)	
<b>3Pt FG made:</b> 3 at Winona State (12/12)	
<b>3Pt FG attempts:</b> 3, 2x, last at SW Minnesota State (1/30)	
<b>FT made:</b> 10 at Minnesota, Crookston (2/13)	
<b>FT attempts:</b> 11 at Minnesota, Crookston (2/13)	
<b>Rebounds:</b> 9 at Winona State (12/12)	
<b>Assists:</b> 5 at Winona State (12/12)	
<b>Steals:</b> 3 vs. Northern State (1/15)	
<b>Blocked Shots:</b> 1, 6x, last vs. Minnesota Duluth (1/23)	
<b>Minutes:</b> 42 at Winona State (12/12)	

## #25 Noah Shepherd • Fr. • G

Season	Career
<b>Points:</b> 11 at Concordia University (1/8)	6-2 • 167 • Minneapolis, Minn.
<b>FG made:</b> 5 at Concordia University (1/8)	
<b>FG attempts:</b> 8 at Concordia University (1/8)	
<b>3Pt FG made:</b> 2 vs. Purdue North Central (11/27)	
<b>3Pt FG attempts:</b> 3 at MSU Moorhead (2/12)	
<b>FT made:</b> 2, 2x, last at Minnesota, Crookston (2/13)	
<b>FT attempts:</b> 4 vs. St. Cloud State (2/6)	
<b>Rebounds:</b> 4 vs. St. Cloud State (2/6)	
<b>Assists:</b> 3 at Minnesota State (1/29)	
<b>Steals:</b> 1, 5x, last at Minnesota, Crookston (2/13)	
<b>Blocked Shots:</b> 1 at Minnesota State (1/29)	
<b>Minutes:</b> 26 at Minnesota State (1/29)	

## #34 Mason Walters • Fr. • G/F

Season	Career
<b>Points:</b> 14 vs. Purdue North Central (11/28)	6-7 • 200 • Milton, Wis.
<b>FG made:</b> 4, 5x, last vs. Concordia Univ., St. Paul (2/5)	
<b>FG attempts:</b> 10 at Minnesota State (1/29)	
<b>3Pt FG made:</b> 2, 3x, last vs. Concordia Univ. (2/5)	
<b>3Pt FG attempts:</b> 4, 2x, last at Minnesota State (1/29)	
<b>FT made:</b> 8 at Purdue North Central (11/27)	
<b>FT attempts:</b> 8 at Purdue North Central (11/27)	
<b>Rebounds:</b> 7 at St. Cloud State (1/9)	
<b>Assists:</b> 4 at SW Minnesota State (1/30)	
<b>Steals:</b> 1, 3x, last at Minnesota, Crookston (2/13)	
<b>Blocked Shots:</b> 1, 2x, last vs. Minnesota Duluth (1/23)	
<b>Minutes:</b> 29 vs. Minnesota Duluth (1/23)	

**Preseason NABC Division II Coaches Poll  
(As of 2/9/2010)**

<i>Rk</i>	<i>School</i>	<i>W-L</i>	<i>Points</i>	<i>Prev</i>
1	Arkansas Tech (8)	21-0	200	1
2	Southern Ind.	21-0	192	2
3	Central Mo.	20-1	183	3
<b>4</b>	<b><i>Minn. St. Mankato</i></b>	<b><i>21-1</i></b>	<b><i>173</i></b>	<b><i>4</i></b>
5	Valdosta St.	21-2	165	5
6	Midwestern St.	21-1	164	7
7	Augusta St.	19-2	154	12
8	Ky. Wesleyan	23-3	135	16
9	Mesa St.	19-1	125	13
10	Fort Hays St.	18-3	117	8
11	Indiana (Pa.)	18-2	116	6
12	East Stroudsburg	19-1	102	20
13	Bentley	19-3	92	10
14	Georgia College	18-2	91	21
15	Seattle Pacific	17-3	90	9
16	Fla. Southern	19-3	89	11
17	Western Wash.	21-3	87	18
18	Quincy	19-3	58	22
19	Metro St.	18-3	48	23
20	West Liberty St.	16-1	45	24
21	Kutztown	17-3	38	15
22	Drury	18-4	33	14
23	Rollins	17-4	32	17
<b>24</b>	<b><i>Augustana (S.D.)</i></b>	<b><i>17-4</i></b>	<b><i>26</i></b>	<b><i>25</i></b>
25	Stonehill	18-4	11	NR

**OTHERS RECEIVING VOTES:** *St. Cloud State (MN) 9*, Central Oklahoma 5, Clark Atlanta (GA) 4, Grand Valley State (MI) 2, Findlay (OH) 1, St Augustine's (NC) 1.

**DROPPED OUT:** No. 19 Findlay.

***Bold Italics - NSIC member***

**Division II Bulletin  
Preseason Top 25**

<b>Rk-Team</b>
1-Brigham Young-Hawaii
2-Findlay
3-Southwest Baptist
4-Cal Poly-Pomona
5-Bellarmino
6-Tusculum
7-Merrimack
8-Augusta State
9-Florida Southern
10-Bentley
11-Valdosta State
<b><i>12-Southwest Minnesota</i></b>
13-Metropolitan State
14-Central Missouri
<b><i>15-Winona State</i></b>
16-Kutztown
17-Central Oklahoma
18-Grand Valley State
19-Philadelphia
20-Northern Kentucky
21-Delta State
22-Rollins
23-Johnson C. Smith
24-West Virginia State
25-Incarnate Word

**Others to watch:** Barton, Cal State-San Bernardino, Catawba, Christian Brothers, Claffin, Dallas Baptist, Fort Hays State, Gannon, Massachusetts-Lowell, New Mexico Highlands, Seattle Pacific, Southern Indiana, Tarleton State, South Carolina-Aiken, Virginia Union

***Italics - NSIC member***

**Northern Sun Standings  
(As of Feb. 15)**

<b>Team</b>	<b>NSIC</b>	<b>All</b>
1 Minnesota State	15-2	22-2
2 St. Cloud State	14-3	20-4
3 Augustana	12-4	19-4
4 Winona State	11-6	17-7
5 Concordia University	10-7	13-11
6 Mary	9-7	13-10
7 Northern State	8-8	12-11
8 Southwest MSU	8-9	13-10
9 Wayne State (Neb.)	6-8	9-12
10 Upper Iowa	7-9	10-13
<b>11 Bemidji State</b>	6-11	9-14
12 MSU Moorhead	5-12	8-16
13 Minnesota Duluth	4-13	7-17
14 Minnesota, Crookston	1-16	4-19

**2009-10 NSIC MBB Coaches  
Preseason Poll**

<b>No.</b>	<b>Team (First Place)</b>	<b>Points</b>
1.	St. Cloud State (3)	171
2.	Winona State (6)	169
3.	Minnesota State (2)	164
4.	SMSU (2)	143
5.	Augustana	136
6.	Concordia-St. Paul	117
7.	Northern State	113
8.	Minnesota Duluth	97
<b>9.</b>	<b>Bemidji State</b>	<b>89</b>
10.	Wayne State	65
11.	MSU Moorhead	60
12.	Upper Iowa	59
13.	University of Mary	45
14.	Minnesota, Crookston	28

# MATT BOWEN

## HEAD COACH - FOURTH SEASON

**Matt Bowen** became the 19th head men's basketball coach at Bemidji State University June 30, 2006. He enters his fourth season as head coach at Bemidji State after spending 15 years as an assistant coach at the Division I level. The River Falls, Wis. native has improved the Beavers' record in each season. Last season, BSU went 8-19 overall and 6-14 in the Northern Sun Intercollegiate Conference, finishing tied for 10th. Bowen guided his team to a 6-21 overall record and a 3-15 record in the NSIC for a ninth place finish in 2007-08 and was 5-23 overall and 5-13 in the NSIC in 2006-07. Bowen and his staff are still in the rebuilding stages as he was met with the challenge of repairing a team that went 15-13 overall and 9-5 in the NSIC that was dismantled at the conclusion of the 2005-06 season. Bowen inherited a team that carried over just three players from the 2005-06 squad. In the process of rebuilding there are bumps along the road, but the Beavers are making strides in the right direction, defeating back-to-back nationally ranked opponents during a four-game winning streak last season (Jan. 6-16). BSU beat No. 24 St. Cloud State University at home, 69-66, and then traveled to No. 11 Northern State University and won a two overtime thriller 100-93. In the process of rebuilding, Bowen and his staff have recruited and brought in some of the best talent from around the state of Minnesota to help put the pieces of the BSU men's basketball program back together.

Bowen comes to BSU after spending the past 15 years molding his coaching style after some of NCAA Division I men's basketball's greatest coaching legends. He was a student manager for Bob Knight at Indiana University and served as an assistant coach under both Gene Bartow at the University of Alabama at Birmingham and most recently, Homer Drew at Valparaiso University. Bowen's trio of mentors have combined for nearly 2,100 career wins and 105 years of head coaching experience.

Although the BSU head coaching assignment is the first of its kind for Bowen, he welcomes the opportunity to take the reigns and guide a program for himself.

During his four years under Drew at Valpo, Bowen helped to lead the Crusaders to an overall record of 70-52 (.574) with a 41-21 (.661) mark versus Mid-Continent Conference competition. In 2003, his first season at the university, the team was 20-11 overall and 12-2 in the league as it grabbed the front end of back-to-back conference titles. The Valpo men capped the year off with a trip to the National Invitational Tournament (NIT). The following season, the Crusaders went 18-13 overall with an 11-5 mark versus the league to earn their second league crown and a berth into the NCAA Tournament.

In addition to game day and practice duties, Bowen was responsible for organizing all recruiting efforts, summer youth camps, game preparation and scouting and being the team's academic coordinator.

As a recruiter, Bowen was responsible for signing the No. 1 incoming class in the Mid-Continent Conference and one of the Top-100 nationally according to last spring's HoopScoop and Dave Telep recruiting publications. Bowen's ties to the Midwest, specifically Minnesota, were evident in the class as it was headlined by Mr. Basketball Minnesota Finalist and Tartan High School graduate Urule Igbavboa.

Bowen began his collegiate coaching ventures in 1995 when he was hired as an assistant coach at Alabama-Birmingham. In seven seasons at UAB, the Blazers captured a Conference USA National Division Championship (1999), went to the NCAA Tournament (1999) and were twice invited to participate in the NIT (1997, 1998).

The River Falls, Wis. native and son of long-time NCAA Division III head men's basketball coach at the University of Wisconsin-River Falls, Bowen has been around basketball all of his life. But he first acquired a taste of his own for collegiate basketball as the student manager for Knight's Indiana Hoosiers (1990-1995). While serving under coach Knight, Bowen was a part of two Big Ten titles (1991, 1993) and four NCAA Tournament appearances, twice advancing to the Elite Eight (1992-1993) and earning a spot in the Final Four in 1992.

He joins a long list of former Indiana managers who have gone on to make a name for themselves in coaching, most notably New Jersey Nets Head Coach Lawrence Frank, a manager at IU from 1989 to 1992. While at Indiana, Bowen also worked directly with George David, now the Director of Scouting for the Detroit Pistons and Ryan Carr, a scout for the Indiana Pacers. In addition, Bowen's father, Rick, got his feet wet as a Hoosier student manager under Branch McCracken in the 1960s.

Bowen is a 1995 graduate of Indiana with a Bachelor of Science degree in Health, Physical Education and Recreation (HPER). He picked up a Master of Arts degree in education during his time at UAB, graduating in 1999.

Bowen and his wife Ashli have a seven-year-old daughter McKenzie and a two-year-old daughter Addison.

### THE BOWEN FILE

YEAR	SCHOOL	ASSIGNMENT	RECORDS/NOTABLE TEAM ACHIEVEMENTS
1990-91	INDIANA	STUDENT MANAGER	BIG TEN CHAMPION, NCAA TOURNAMENT
1991-92	INDIANA	STUDENT MANAGER	NCAA TOURNAMENT, FINAL FOUR
1992-93	INDIANA	STUDENT MANAGER	BIG TEN CHAMPION, NCAA TOURNAMENT, ELITE EIGHT
1993-94	INDIANA	STUDENT MANAGER	NCAA TOURNAMENT
1994-95	INDIANA	STUDENT MANAGER	
1995-96	ALABAMA-BIRMINGHAM	ASSISTANT COACH	
1996-97	ALABAMA BIRMINGHAM	ASSISTANT COACH	NIT PARTICIPANT
1997-98	ALABAMA-BIRMINGHAM	ASSISTANT COACH	NIT PARTICIPANT
1998-99	ALABAMA-BIRMINGHAM	ASSISTANT COACH	NCAA TOURNAMENT, CONFERENCE USA DIVISION CHAMPS
1999-00	ALABAMA-BIRMINGHAM	ASSISTANT COACH	
2000-01	ALABAMA-BIRMINGHAM	ASSISTANT COACH	
2001-02	ALABAMA-BIRMINGHAM	ASSISTANT COACH	
2002-03	VALPARAISO	ASSISTANT COACH	NIT PARTICIPANT, MID-CONTINENT CONFERENCE CHAMPS
2003-04	VALPARAISO	ASSISTANT COACH	NCAA TOURNAMENT, MID-CONTINENT CONFERENCE CHAMPS
2004-05	VALPARAISO	ASSISTANT COACH	
2005-06	VALPARAISO	ASSISTANT COACH	
2006-07	BEMIDJI STATE	HEAD COACH	5-23/5-13 NSIC, NSIC TOURNAMENT
2007-08	BEMIDJI STATE	HEAD COACH	6-21/3-15 NSIC
2008-09	BEMIDJI STATE	HEAD COACH	8-19/6-14 NSIC
2009-10	BEMIDJI STATE	HEAD COACH	9-14/6-11 NSIC



### BOWEN'S BSU TEAM VERSUS...

Alaska-Anchorage	0-2
Augustana (S.D.)	0-3
College of the Ozarks	1-0
Concordia University, St. Paul	1-7
Dickinson State	2-0
Jamestown	1-1
Mary (N.D.)	1-5
Minnesota, Crookston	7-1
Minnesota Duluth	1-4
MSU Moorhead	2-6
Minnesota State	0-3
Nebraska-Omaha	0-1
North Dakota	0-4
Northern State	1-6
Northland College (Wis.)	1-0
Puget Sound	0-1
Purdue North Central	1-0
SW Minnesota State	0-7
St. Cloud State	1-5
UW-River Falls	0-1
Upper Iowa	3-3
Viterbo University	1-0
Wayne State (Neb.)	2-5
Winona State	0-6
Wisconsin-Parkside	0-1
Wisconsin-Stout	0-1
Wisconsin-Superior	1-1

### BOWEN'S EXHIBITION RECORD...

Indiana	0-1
Minnesota	0-1
North Dakota	0-1
North Dakota State	0-1
Northern Iowa	0-1
Wisconsin	0-1
UW-River Falls	1-0

### BOWEN'S MILESTONES AT BSU...

First game: Minnesota Duluth (11/15/06)  
 First Win: at Minnesota, Crookston (1/6/07)  
 First NSIC Win: at Minnesota, Crookston (1/6/07)  
 First overtime win: vs. Minnesota, Crookston (1/5/08)  
 First 100-point game: at No. 11 Northern State W, 100-93 2OT (Jan. 16)

# 2009-10 NUMERICAL AND ALPHABETICAL ROSTERS

## NUMERICAL

No.	Name	Pos.	Ht.	Wt.	Yr.	Hometown (Last School)
2	Seth Haake	G	6-3	176	Sr.	Eden Prairie, Minn. (Eden Prairie HS)
3	Lance Rongstad	G	6-3	200	Fr.	Eleva, Wis. (Eleva-Strum HS)
4	Brady Fairbanks	G/F	6-5	189	Jr.	Bena, Minn. (Cass Lake-Bena HS)
11	Jake Lindstrom	G	6-0	175	So.	Cottage Grove, Minn. (Park HS)
12	Jon Krebs	G	6-5	184	Fr.	Mahtomedi, Minn. (Mahtomedi HS)
13	Patrick Cassidy	F	6-6	209	Jr.	St. Paul, Minn. (St. Bernard's HS)
15	Burke Lendl	F	6-7	188	Fr.	St. Michael, Minn. (Rogers HS)
25	Noah Shepherd	G	6-2	167	Fr.	Minneapolis, Minn. (Washburn HS)
32	Bryce Tesdahl	G/F	6-3	195	So.	Crosby, Minn. (Crosby-Ironton HS)
34	Mason Walters	G/F	6-7	200	Fr.	Milton, Wis. (Milton HS)
41	Sergej Baskow	F/C	6-8	209	R-Jr.	Ludwigsburg, Germany
50	David Berthene	F	6-9	185	Fr.	Lakeville, Minn. (Lakeville North HS)

## ALPHABETICAL

No.	Name	Pos.	Ht.	Wt.	Yr.	Hometown (Last School)
41	Sergej Baskow	F/C	6-8	209	R-Jr.	Ludwigsburg, Germany
50	David Berthene	F	6-9	185	Fr.	Lakeville, Minn. (Lakeville North HS)
13	Patrick Cassidy	F	6-6	209	Jr.	St. Paul, Minn. (St. Bernard's HS)
4	Brady Fairbanks	G/F	6-5	189	Jr.	Bena, Minn. (Cass Lake-Bena HS)
2	Seth Haake	G	6-3	176	Sr.	Eden Prairie, Minn. (Eden Prairie HS)
12	Jon Krebs	G	6-5	184	Fr.	Mahtomedi, Minn. (Mahtomedi HS)
15	Burke Lendl	F	6-7	188	Fr.	St. Michael, Minn. (Rogers HS)
11	Jake Lindstrom	G	6-0	175	So.	Cottage Grove, Minn. (Park HS)
3	Lance Rongstad	G	6-3	200	Fr.	Eleva, Wis. (Eleva-Strum HS)
25	Noah Shepherd	G	6-2	167	Fr.	Minneapolis, Minn. (Washburn HS)
32	Bryce Tesdahl	G/F	6-3	195	So.	Crosby, Minn. (Crosby-Ironton HS)
34	Mason Walters	G/F	6-7	200	Fr.	Milton, Wis. (Milton HS)

## COACHING STAFF

**Head Coach:** Matt Bowen (Indiana '95), fourth season

**Assistant Coach:** Jeremy Tiers (Lakehead University '98), fourth season

**Graduate Assistant Coach:** Ryan Montgomery (Hamline University '06), second season

**Athletic Trainer:** Travis Shock, second season

**Support Staff:** Reid Nichols, third season

Michael Gelle, third season

Trent Fisher, second season

Dax Larson, Athletic Media Relations

## PONUNCIATION GUIDE

SERGEJ BASKOW	SURGE-a BAS-cow
Seth HAAKE	HAY-key
David BERTHENE	Birth-EEen

## By Class

SENIORS (1)

Haake

JUNIORS (4)

Baskow, Cassidy, Fairbanks, Wruck

SOPHOMORES (2)

Lindstrom, Tesdahl

FRESHMEN (6)

Berthene, Krebs, Lendl, Rongstad, Shepherd, Walters

## By State/Country

GERMANY (1)

Baskow (Ludwigsburg)

UNITED STATES (13)

MINNESOTA (11)

Berthene (Lakeville)

Cassidy (St. Paul)

Fairbanks (Bena)

Haake (Eden Prairie)

Krebs (Mahtomedi)

Lendl (St. Michael)

Lindstrom (Cottage Grove)

Shepherd (Minneapolis)

Tesdahl (Crosby)

Wruck (St. Cloud)

WISCONSIN (2)

Rongstad (Eleva)

Walters (Milton)

## By Height

David Berthene 6-9

Sergej Baskow 6-8

Burke Lendl 6-7

Mason Walters 6-7

Patrick Cassidy 6-6

Brady Fairbanks 6-5

Jon Krebs 6-5

Tyler Wruck 6-4

Seth Haake 6-3

Lance Rongstad 6-3

Bryce Tesdahl 6-3

Noah Shepherd 6-2

Jake Lindstrom 6-0

## By Position

GUARDS (5)

Haake, Krebs, Lindstrom,

Rongstad, Shepherd

GUARD/FORWARDS (4)

Fairbanks, Tesdahl, Walters,

Wruck

FORWARDS (3)

Berthene, Cassidy, Lendl

FORWARD/CENTERS (1)

Baskow

**Bemidji State University**  
**Bemidji State Combined Team Statistics (as of Feb 15, 2010)**  
**All games**

<b>RECORD:</b>	<b>OVERALL</b>	<b>HOME</b>	<b>AWAY</b>	<b>NEUTRAL</b>
<b>ALL GAMES.....</b>	<b>(9-14)</b>	<b>(3-7)</b>	<b>(5-7)</b>	<b>(1-0)</b>
<b>CONFERENCE.....</b>	<b>(6-11)</b>	<b>(3-6)</b>	<b>(3-5)</b>	<b>(0-0)</b>
<b>NON-CONFERENCE.....</b>	<b>(3-3)</b>	<b>(0-1)</b>	<b>(2-2)</b>	<b>(1-0)</b>

## Player	GP-GS	Min--Avg	---TOTAL---		---3-PTS---		FT-FTA	Pct	----REBOUNDS----				PF	FO	A	TO	Blk	Stl	Pts	Avg
			FG-FGA	Pct	3FG-FGA	Pct			Off	Def	Tot	Avg								
02 Haake, Seth.....	23-23	730 31.7	150-275	.545	52-110	.473	62-78	.795	28	73	101	4.4	72	4	53	52	9	40	414	18.0
03 Rongstad, Lance....	20-14	489 24.5	85-163	.521	15-39	.385	46-60	.767	27	58	85	4.3	56	1	30	44	6	19	231	11.6
04 Fairbanks, Brady...	5-5	143 28.6	20-42	.476	2-16	.125	13-19	.684	4	17	21	4.2	5	0	10	15	2	4	55	11.0
32 Tesdahl, Bryce.....	23-23	765 33.3	72-145	.497	16-41	.390	87-99	.879	7	111	118	5.1	54	0	108	53	2	21	247	10.7
13 Cassidy, Patrick...	23-23	592 25.7	76-150	.507	5-25	.200	35-48	.729	22	60	82	3.6	48	3	29	38	7	11	192	8.3
11 Lindstrom, Jake....	20-7	487 24.4	45-122	.369	18-61	.295	36-41	.878	6	34	40	2.0	46	2	35	18	1	19	144	7.2
01 Johnson, Jimmy.....	5-5	98 19.6	14-22	.636	0-0	.000	7-16	.438	4	14	18	3.6	15	0	7	12	5	3	35	7.0
34 Walters, Mason.....	20-8	293 14.7	36-95	.379	10-27	.370	37-50	.740	13	36	49	2.5	43	1	16	13	2	3	119	6.0
24 Wruck, Tyler.....	5-0	83 16.6	8-16	.500	3-6	.500	8-11	.727	4	9	13	2.6	12	1	2	7	1	5	27	5.4
50 Berthene, David....	23-2	329 14.3	37-87	.425	15-43	.349	12-14	.857	10	14	24	1.0	23	0	11	9	5	3	101	4.4
15 Lendl, Burke.....	20-5	328 16.4	19-51	.373	5-15	.333	12-18	.667	10	41	51	2.6	31	1	12	15	4	9	55	2.8
25 Shepherd, Noah.....	20-0	172 8.6	18-39	.462	4-16	.250	8-20	.400	8	12	20	1.0	17	0	17	14	1	5	48	2.4
41 Baskow, Sergej....	5-0	60 12.0	3-12	.250	0-1	.000	5-8	.625	6	8	14	2.8	14	1	2	8	1	3	11	2.2
12 Krebs, Jon.....	13-0	56 4.3	4-16	.250	0-5	.000	5-6	.833	4	11	15	1.2	7	0	2	8	0	1	13	1.0
TEAM.....										40	40	80	3.5	0		4				
-----																				
Total.....	23	4625	587-1235	.475	145-405	.358	373-488	.764	193	538	731	31.8	443	14	334	310	46	146	1692	73.6
Opponents.....	23	4625	619-1329	.466	186-489	.380	337-470	.717	249	520	769	33.4	421	4	334	297	61	162	1761	76.6

TEAM STATISTICS	BSUMBB	OPP	DATE	OPPONENT	W/L	SCORE	ATTEND
SCORING.....	1692	1761	11/20/09	vs College of the Ozarks, MO	W	60-54	147
Points per game.....	73.6	76.6	11/21/09	at Viterbo University, Wis.	W	69-44	225
Scoring margin.....	-3.0	-	11/24/09	JAMESTOWN	L	69-72	798
FIELD GOALS-ATT.....	587-1235	619-1329	11-27-09	at Purdue North Central	W	88-60	145
Field goal pct.....	.475	.466	11-28-09	at Wisconsin-Parkside	L	65-78	518
3 POINT FG-ATT.....	145-405	186-489	*12/04/09	MSUMMBB	L	71-73	1021
3-point FG pct.....	.358	.380	*12/05/09	UMCMBB	W	89-72	855
3-pt FG made per game..	6.3	8.1	*12/12/09	at Winona State	W OT	88-87	1186
FREE THROWS-ATT.....	373-488	337-470	*12/13/09	at Upper Iowa	L	80-91	367
Free throw pct.....	.764	.717	12/29/09	at Northern Michigan	L	75-84	390
REBOUNDS.....	731	769	*01/02/10	AUGIEMBB	L	73-80	826
Rebounds per game.....	31.8	33.4	*01/03/10	WSCMBB	L	66-78	761
Rebounding margin.....	-1.7	-	*01/08/10	at Concordia University, St. Paul	L	76-110	600
ASSISTS.....	334	334	*01/09/10	at St. Cloud State University	L	69-80	3591
Assists per game.....	14.5	14.5	*01/15/10	NSU	L	65-67	732
TURNOVERS.....	310	297	*01/16/10	MARYMEN	W	81-59	927
Turnovers per game.....	13.5	12.9	*1/23/10	UMD-MBB	W	71-69	601
Turnover margin.....	-0.6	-	*1/29/10	at Minnesota State	L	66-108	1823
Assist/turnover ratio..	1.1	1.1	*8/30/10	at Southwest Minnesota State	L	67-71	2746
STEALS.....	146	162	*2/5/2010	CONCORDIA UNIVERSITY, ST. PAUL	L	73-78	929
Steals per game.....	6.3	7.0	*2/6/2010	ST. CLOUD STATE UNIVERSITY	L	71-107	802
BLOCKS.....	46	61	*2/12/10	at MSUMMBB	W	79-75	-
Blocks per game.....	2.0	2.7	*02/13/10	at UMCMBB	W	81-64	153
WINNING STREAK.....	2	-					
Home win streak.....	0	-					
ATTENDANCE.....	8252	11891					
Home games-Avg/Game....	10-825	12-979					
Neutral site-Avg/Game..	-	1-147					

SCORE BY PERIODS:	1st	2nd	OT	Total
Bemidji State.....	810	868	14	- 1692
Opponents.....	799	949	13	- 1761

**Bemidji State University**  
**Bemidji State Overall/Conference Statistics (as of Feb 15, 2010)**  
**All games**

SUMMARY	OVERALL STATISTICS										CONFERENCE STATISTICS									
	GP-GS	Min/G	FG%	3PT%	FT%	R/G	A/G	STL	BLK	PTS/G	GP-GS	Min/G	FG%	3PT%	FT%	R/G	A/G	STL	BLK	PTS/G
Haake, Seth.....	23-23	31.7	.545	.473	.795	4.4	2.3	40	9	18.0	17-17	34.1	.536	.488	.783	4.5	2.5	31	9	19.1
Rongstad, Lance.....	20-14	24.5	.521	.385	.767	4.3	1.5	19	6	11.6	15-13	28.5	.554	.438	.750	4.5	1.7	16	6	13.8
Fairbanks, Brady....	5-5	28.6	.476	.125	.684	4.2	2.0	4	2	11.0										
Tesdahl, Bryce.....	23-23	33.3	.497	.390	.879	5.1	4.7	21	2	10.7	17-17	33.5	.508	.423	.859	5.6	4.9	15	2	11.6
Cassidy, Patrick.....	23-23	25.7	.507	.200	.729	3.6	1.3	11	7	8.3	17-17	25.8	.491	.158	.750	3.5	1.4	8	6	8.3
Lindstrom, Jake.....	20-7	24.4	.369	.295	.878	2.0	1.8	19	1	7.2	14-6	25.9	.381	.324	.886	2.1	2.1	13	1	7.6
Johnson, Jimmy.....	5-5	19.6	.636	.000	.438	3.6	1.4	3	5	7.0										
Walters, Mason.....	20-8	14.7	.379	.370	.740	2.5	0.8	3	2	6.0	17-8	16.0	.384	.400	.700	2.6	0.8	3	2	6.1
Wruck, Tyler.....	5-0	16.6	.500	.500	.727	2.6	0.4	5	1	5.4										
Berthene, David.....	23-2	14.3	.425	.349	.857	1.0	0.5	3	5	4.4	17-2	16.5	.419	.333	1.000	1.2	0.5	2	3	5.1
Lendl, Burke.....	20-5	16.4	.373	.333	.667	2.6	0.6	9	4	2.8	17-5	17.6	.370	.250	.667	2.8	0.7	9	3	2.9
Shepherd, Noah.....	20-0	8.6	.462	.250	.400	1.0	0.9	5	1	2.4	16-0	9.4	.429	.143	.375	1.1	0.9	5	1	2.4
Baskow, Sergej.....	5-0	12.0	.250	.000	.625	2.8	0.4	3	1	2.2										
Krebs, Jon.....	13-0	4.3	.250	.000	.833	1.2	0.2	1	0	1.0	10-0	4.3	.231	.000	.833	1.3	0.2	1	0	1.1
Total.....	23		.475	.358	.764	31.8	14.5	146	46	73.6	17		.476	.375	.776	31.1	15.0	103	33	74.5
Opponents.....	23		.466	.380	.717	33.4	14.5	162	61	76.6	17		.481	.398	.719	34.4	16.2	121	50	80.5

SCORING	OVERALL STATISTICS										CONFERENCE STATISTICS									
	FG-FGA	FG%	3FG-FGA	3PT%	FT-FTA	FT%	PTS	PTS/G	FG-FGA	FG%	3FG-FGA	3PT%	FT-FTA	FT%	PTS	PTS/G				
Haake, Seth.....	150-275	.545	52-110	.473	62-78	.795	414	18.0	118-220	.536	42-86	.488	47-60	.783	325	19.1				
Rongstad, Lance.....	85-163	.521	15-39	.385	46-60	.767	231	11.6	77-139	.554	14-32	.438	39-52	.750	207	13.8				
Fairbanks, Brady....	20-42	.476	2-16	.125	13-19	.684	55	11.0												
Tesdahl, Bryce.....	72-145	.497	16-41	.390	87-99	.879	247	10.7	60-118	.508	11-26	.423	67-78	.859	198	11.6				
Cassidy, Patrick....	76-150	.507	5-25	.200	35-48	.729	192	8.3	54-110	.491	3-19	.158	30-40	.750	141	8.3				
Lindstrom, Jake.....	45-122	.369	18-61	.295	36-41	.878	144	7.2	32-84	.381	12-37	.324	31-35	.886	107	7.6				
Johnson, Jimmy.....	14-22	.636	0-0	.000	7-16	.438	35	7.0												
Walters, Mason.....	36-95	.379	10-27	.370	37-50	.740	119	6.0	33-86	.384	10-25	.400	28-40	.700	104	6.1				
Wruck, Tyler.....	8-16	.500	3-6	.500	8-11	.727	27	5.4												
Berthene, David.....	37-87	.425	15-43	.349	12-14	.857	101	4.4	31-74	.419	12-36	.333	12-12	1.000	86	5.1				
Lendl, Burke.....	19-51	.373	5-15	.333	12-18	.667	55	2.8	17-46	.370	3-12	.250	12-18	.667	49	2.9				
Shepherd, Noah.....	18-39	.462	4-16	.250	8-20	.400	48	2.4	15-35	.429	2-14	.143	6-16	.375	38	2.4				
Baskow, Sergej.....	3-12	.250	0-1	.000	5-8	.625	11	2.2												
Krebs, Jon.....	4-16	.250	0-5	.000	5-6	.833	13	1.0	3-13	.231	0-4	.000	5-6	.833	11	1.1				
Total.....	587-1235	.475	145-405	.358	373-488	.764	1692	73.6	440-925	.476	109-291	.375	277-357	.776	1266	74.5				
Opponents.....	619-1329	.466	186-489	.380	337-470	.717	1761	76.6	487-1013	.481	157-394	.398	238-331	.719	1369	80.5				

TOTALS	OVERALL STATISTICS										CONFERENCE STATISTICS									
	O-REB	D-REB	TOTAL	PF	FO	A	TO	A/TO	Hi	Pts	O-REB	D-REB	TOTAL	PF	FO	A	TO	A/TO	Hi	Pts
Haake, Seth.....	28	73	101	72	4	53	52	1.0	30		22	54	76	50	2	42	40	1.1	30	
Rongstad, Lance.....	27	58	85	56	1	30	44	0.7	27		22	46	68	43	0	26	42	0.6	27	
Fairbanks, Brady....	4	17	21	5	0	10	15	0.7	18											
Tesdahl, Bryce.....	7	111	118	54	0	108	53	2.0	22		7	89	96	40	0	84	37	2.3	22	
Cassidy, Patrick....	22	60	82	48	3	29	38	0.8	20		16	44	60	39	3	23	29	0.8	20	
Lindstrom, Jake.....	6	34	40	46	2	35	18	1.9	14		4	25	29	31	0	30	12	2.5	14	
Johnson, Jimmy.....	4	14	18	15	0	7	12	0.6	17											
Walters, Mason.....	13	36	49	43	1	16	13	1.2	14		13	31	44	40	1	13	11	1.2	12	
Wruck, Tyler.....	4	9	13	12	1	2	7	0.3	8											
Berthene, David.....	10	14	24	23	0	11	9	1.2	17		9	11	20	19	0	9	8	1.1	17	
Lendl, Burke.....	10	41	51	31	1	12	15	0.8	6		9	39	48	29	1	12	12	1.0	6	
Shepherd, Noah.....	8	12	20	17	0	17	14	1.2	11		8	10	18	13	0	14	8	1.8	11	
Baskow, Sergej.....	6	8	14	14	1	2	8	0.3	4											
Krebs, Jon.....	4	11	15	7	0	2	8	0.3	6		4	9	13	5	0	2	5	0.4	6	
Total.....	193	538	731	443	14	334	310	1.1	89		147	382	529	309	7	255	207	1.2	89	
Opponents.....	249	520	769	421	4	334	297	1.1	110		200	384	584	310	3	276	200	1.4	110	

Bemidji State University  
 Bemidji State Category Leaders (as of Feb 14, 2010)  
 All games

FG PERCENTAGE	FG ATT	Pct
Johnson, Jimmy.....	14 22	.636
Haake, Seth.....	150 275	.545
Rongstad, Lance.....	85 163	.521
Cassidy, Patrick....	76 150	.507
Wruck, Tyler.....	8 16	.500
Tesdahl, Bryce.....	72 145	.497
Fairbanks, Brady....	20 42	.476
Shepherd, Noah.....	18 39	.462
Berthene, David.....	37 87	.425
Walters, Mason.....	36 95	.379
Lendl, Burke.....	19 51	.373
Lindstrom, Jake.....	45 122	.369

3-POINT PERCENTAGE	3FG ATT	Pct
Wruck, Tyler.....	3 6	.500
Haake, Seth.....	52 110	.473
Tesdahl, Bryce.....	16 41	.390
Rongstad, Lance.....	15 39	.385
Walters, Mason.....	10 27	.370
Berthene, David.....	15 43	.349
Lendl, Burke.....	5 15	.333
Lindstrom, Jake.....	18 61	.295
Shepherd, Noah.....	4 16	.250
Cassidy, Patrick....	5 25	.200
Fairbanks, Brady....	2 16	.125
Krebs, Jon.....	0 5	.000
Baskow, Sergej.....	0 1	.000

FT PERCENTAGE	FT ATT	Pct
Tesdahl, Bryce.....	87 99	.879
Lindstrom, Jake.....	36 41	.878
Berthene, David.....	12 14	.857
Krebs, Jon.....	5 6	.833
Haake, Seth.....	62 78	.795
Rongstad, Lance.....	46 60	.767
Walters, Mason.....	37 50	.740
Cassidy, Patrick....	35 48	.729
Wruck, Tyler.....	8 11	.727
Fairbanks, Brady....	13 19	.684
Lendl, Burke.....	12 18	.667
Baskow, Sergej.....	5 8	.625

POINTS	G	Pts	Pts/G
Haake, Seth.....	23	414	18.0
Tesdahl, Bryce.....	23	247	10.7
Rongstad, Lance.....	20	231	11.6
Cassidy, Patrick....	23	192	8.3
Lindstrom, Jake.....	20	144	7.2
Walters, Mason.....	20	119	6.0
Berthene, David.....	23	101	4.4
Lendl, Burke.....	20	55	2.8
Fairbanks, Brady....	5	55	11.0
Shepherd, Noah.....	20	48	2.4
Johnson, Jimmy.....	5	35	7.0
Wruck, Tyler.....	5	27	5.4

FIELD GOAL ATTEMPTS	G	Att	Att/G
Haake, Seth.....	23	275	12.0
Rongstad, Lance.....	20	163	8.2
Cassidy, Patrick....	23	150	6.5
Tesdahl, Bryce.....	23	145	6.3
Lindstrom, Jake.....	20	122	6.1

FIELD GOALS MADE	G	Made	Made/G
Haake, Seth.....	23	150	6.5
Rongstad, Lance.....	20	85	4.3
Cassidy, Patrick....	23	76	3.3
Tesdahl, Bryce.....	23	72	3.1
Lindstrom, Jake.....	20	45	2.3

3-POINT FG ATTEMPTS	G	Att	Att/G
Haake, Seth.....	23	110	4.8
Lindstrom, Jake.....	20	61	3.1
Berthene, David.....	23	43	1.9
Tesdahl, Bryce.....	23	41	1.8
Rongstad, Lance.....	20	39	2.0

3-POINT FGS MADE	G	Made	Made/G
Haake, Seth.....	23	52	2.3
Lindstrom, Jake.....	20	18	0.9
Tesdahl, Bryce.....	23	16	0.7
Berthene, David.....	23	15	0.7
Rongstad, Lance.....	20	15	0.8

FREE THROW ATTEMPTS	G	Att	Att/G
Tesdahl, Bryce.....	23	99	4.3
Haake, Seth.....	23	78	3.4
Rongstad, Lance.....	20	60	3.0
Walters, Mason.....	20	50	2.5
Cassidy, Patrick....	23	48	2.1

FREE THROWS MADE	G	Made	Made/G
Tesdahl, Bryce.....	23	87	3.8
Haake, Seth.....	23	62	2.7
Rongstad, Lance.....	20	46	2.3
Walters, Mason.....	20	37	1.9
Lindstrom, Jake.....	20	36	1.8

SCORING AVERAGE	G	Pts	Avg/G
Haake, Seth.....	23	414	18.0
Rongstad, Lance.....	20	231	11.6
Fairbanks, Brady....	5	55	11.0
Tesdahl, Bryce.....	23	247	10.7
Cassidy, Patrick....	23	192	8.3
Lindstrom, Jake.....	20	144	7.2
Johnson, Jimmy.....	5	35	7.0
Walters, Mason.....	20	119	6.0
Wruck, Tyler.....	5	27	5.4
Berthene, David.....	23	101	4.4
Lendl, Burke.....	20	55	2.8
Shepherd, Noah.....	20	48	2.4

**Bemidji State University**  
**Bemidji State Game-by-Game Highs (as of Feb 14, 2010)**  
**All games**

Opponent	Date	Score	WL	POINTS	REBOUNDS	ASSISTS	STEALS	BLOCKED SHOTS
vs College of the Ozarks,	11/20/09	60-54	W	14-Fairbanks, Br	4-Cassidy, Patr Wruck, Tyler	5-Tesdahl, Bryc	3-Fairbanks, Br	1-Wruck, Tyler Fairbanks, Br Johnson, Jimm Berthene, Dav
at Viterbo University, Wi	11/21/09	69-44	W	15-Haake, Seth	8-Haake, Seth	8-Tesdahl, Bryc	2-Haake, Seth	3-Johnson, Jimm
JAMESTOWN	11/24/09	69-72	L	18-Fairbanks, Br	6-Fairbanks, Br	4-Fairbanks, Br	3-Haake, Seth Lindstrom, Ja Tesdahl, Bryc	1-Johnson, Jimm
at Purdue North Central	11-27-09	88-60	W	17-Johnson, Jimm	6-Rongstad, Lan	4-Haake, Seth	2-Haake, Seth Wruck, Tyler	None
at Wisconsin-Parkside	11-28-09	65-78	L	17-Haake, Seth	6-Fairbanks, Br	3-Tesdahl, Bryc Haake, Seth	1-Rongstad, Lan Lindstrom, Ja Baskow, Serge	1-Cassidy, Patr
MSUMMBB	12/04/09	71-73	L	20-Cassidy, Patr	6-Tesdahl, Bryc	7-Tesdahl, Bryc	4-Lindstrom, Ja	2-Cassidy, Patr
UMCMBB	12/05/09	89-72	W	20-Tesdahl, Bryc	6-Lindstrom, Ja Tesdahl, Bryc	7-Haake, Seth	2-Tesdahl, Bryc	2-Haake, Seth
at Winona State	12/12/09	88-87	WO	25-Haake, Seth	9-Tesdahl, Bryc Rongstad, Lan	11-Tesdahl, Bryc	2-Haake, Seth	1-Rongstad, Lan
at Upper Iowa	12/13/09	80-91	L	21-Haake, Seth	5-Tesdahl, Bryc Haake, Seth	6-Tesdahl, Bryc Lindstrom, Ja	3-Lindstrom, Ja	2-Cassidy, Patr
at Northern Michigan	12/29/09	75-84	L	27-Haake, Seth	8-Rongstad, Lan	5-Tesdahl, Bryc	2-Tesdahl, Bryc	1-Berthene, Dav Lendl, Burke
AUGIEMBB	01/02/10	73-80	L	24-Haake, Seth	8-Tesdahl, Bryc	4-Tesdahl, Bryc	2-Lindstrom, Ja	1-Rongstad, Lan
WSCMBB	01/03/10	66-78	L	16-Haake, Seth	6-Rongstad, Lan	8-Tesdahl, Bryc	2-Haake, Seth Tesdahl, Bryc	1-Haake, Seth
at Concordia University,	01/08/10	76-110	L	19-Haake, Seth	8-Krebs, Jon	3-Tesdahl, Bryc	2-Cassidy, Patr	1-Cassidy, Patr Berthene, Dav Haake, Seth Lindstrom, Ja Lendl, Burke
at St. Cloud State Univer	01/09/10	69-80	L	15-Haake, Seth Tesdahl, Bryc	7-Walters, Maso	4-Tesdahl, Bryc	5-Haake, Seth	1-Rongstad, Lan
NSU	01/15/10	65-67	L	18-Haake, Seth	6-Haake, Seth	4-Tesdahl, Bryc	4-Haake, Seth	1-Rongstad, Lan Tesdahl, Bryc
MARYMEN	01/16/10	81-59	W	18-Haake, Seth	10-Tesdahl, Bryc	7-Haake, Seth	3-Rongstad, Lan	1-Rongstad, Lan
UMD-MBB	1/23/10	71-69	W	23-Haake, Seth	8-Tesdahl, Bryc	6-Tesdahl, Bryc	2-Haake, Seth	1-Rongstad, Lan Walters, Maso Berthene, Dav
at Minnesota State	1/29/10	66-108	L	12-Lindstrom, Ja	5-Walters, Maso	3-Shepherd, Noa	2-Haake, Seth Rongstad, Lan	1-Shepherd, Noa
at Southwest Minnesota St	8/30/10	67-71	L	16-Tesdahl, Bryc	6-Tesdahl, Bryc	7-Tesdahl, Bryc	3-Haake, Seth	1-Haake, Seth
CONCORDIA UNIVERSITY, ST.	2/5/2010	73-78	L	26-Haake, Seth	10-Lendl, Burke	8-Tesdahl, Bryc	2-Cassidy, Patr Lendl, Burke	None
ST. CLOUD STATE UNIVERSIT	2/6/2010	71-107	L	17-Haake, Seth	7-Haake, Seth	3-Walters, Maso Haake, Seth	2-Tesdahl, Bryc	1-Lendl, Burke Cassidy, Patr Haake, Seth
at MSUMMBB	2/12/10	79-75	W	30-Haake, Seth	9-Tesdahl, Bryc	4-Lendl, Burke	2-Lendl, Burke Haake, Seth	2-Haake, Seth
at UMCMBB	02/13/10	81-64	W	27-Rongstad, Lan	6-Haake, Seth	4-Tesdahl, Bryc	5-Tesdahl, Bryc	None

**Bemidji State University**  
**Bemidji State Team Game-by-Game (as of Feb 14, 2010)**  
**All games**

TEAM STATISTICS

Opponent	Date	Score	W/L	---TOTAL---		--3-PTRS--		FT-FTA		Pct		----REBOUNDS----				PF		A		TO		Blk		Stl		Pts---Avg	
				FG-FGA	Pct	3FG-FGA	Pct	Off	Def	Tot	Avg	PF	A	TO	Blk	Stl	Pts	Avg									
vs College of the Oza	11/20/09	60-54	W	16-37	.432	3-15	.200	25-33	.758	7	22	29	29.0	22	8	23	4	9	60	60.0							
at Viterbo University	11/21/09	69-44	W	26-55	.473	8-22	.364	9-14	.643	12	33	45	37.0	14	14	13	5	5	69	64.5							
JAMESTOWN	11/24/09	69-72	L	25-53	.472	4-18	.222	15-19	.789	8	18	26	33.3	16	14	18	1	13	69	66.0							
at Purdue North Centr	11-27-09	88-60	W	32-53	.604	6-14	.429	18-26	.692	6	33	39	34.8	30	19	18	0	9	88	71.5							
at Wisconsin-Parkside	11-28-09	65-78	L	22-54	.407	2-15	.133	19-27	.704	8	26	34	34.6	29	9	16	1	3	65	70.2							
MSUMMBB	12/04/09	71-73	L	28-62	.452	7-24	.292	8-11	.727	9	21	30	33.8	15	16	8	4	9	71	70.3							
UMCMBB	12/05/09	89-72	W	32-58	.552	7-16	.438	18-21	.857	8	27	35	34.0	19	20	11	3	6	89	73.0							
at Winona State	12/12/09	88-87	Wot	31-62	.500	13-29	.448	13-17	.765	13	25	38	34.5	22	22	11	1	5	88	74.9							
at Upper Iowa	12/13/09	80-91	L	28-52	.538	8-16	.500	16-18	.889	2	17	19	32.8	18	19	11	4	6	80	75.4							
at Northern Michigan	12/29/09	75-84	L	26-58	.448	13-30	.433	10-12	.833	5	24	29	32.4	23	15	15	2	4	75	75.4							
AUGIEMBB	01/02/10	73-80	L	23-48	.479	7-17	.412	20-28	.714	7	26	33	32.5	18	13	12	1	3	73	75.2							
WSCMBB	01/03/10	66-78	L	23-53	.434	5-16	.313	15-19	.789	7	16	23	31.7	22	11	7	1	5	66	74.4							
at Concordia Universi	01/08/10	76-110	L	26-66	.394	7-23	.304	17-20	.850	17	25	42	32.5	16	14	20	5	6	76	74.5							
at St. Cloud State Un	01/09/10	69-80	L	24-48	.500	3-10	.300	18-22	.818	11	24	35	32.6	22	14	18	1	5	69	74.1							
NSU	01/15/10	65-67	L	23-57	.404	5-17	.294	14-19	.737	12	19	31	32.5	18	14	7	2	8	65	73.5							
MARYMEN	01/16/10	81-59	W	29-49	.592	6-16	.375	17-21	.810	7	29	36	32.8	15	20	14	1	6	81	74.0							
UMD-MBB	1/23/10	71-69	W	24-51	.471	8-15	.533	15-21	.714	8	28	36	32.9	12	12	7	3	3	71	73.8							
at Minnesota State	1/29/10	66-108	L	26-61	.426	2-15	.133	12-17	.706	10	20	30	32.8	19	14	19	1	7	66	73.4							
at Southwest Minnesot	8/30/10	67-71	L	25-52	.481	4-16	.250	13-18	.722	3	20	23	32.3	20	18	5	1	6	67	73.1							
CONCORDIA UNIVERSITY,	2/5/2010	73-78	L	26-53	.491	9-15	.600	12-17	.706	7	17	24	31.9	16	15	11	0	5	73	73.1							
ST. CLOUD STATE UNIVE	2/6/2010	71-107	L	22-52	.423	5-14	.357	22-28	.786	9	19	28	31.7	23	14	19	3	5	71	73.0							
at MSUMMBB	2/12/10	79-75	W	27-56	.482	7-16	.438	18-26	.692	13	27	40	32.0	15	8	15	2	5	79	73.2							
at UMCMBB	02/13/10	81-64	W	23-45	.511	6-16	.375	29-34	.853	4	22	26	31.8	19	11	12	0	13	81	73.6							
Bemidji State				1692	587-1235	.475	145-405	.358	373-488	.764	193	538	731	31.8	443	334	310	46	146	1692	73.6						
Opponents				1761	619-1329	.466	186-489	.380	337-470	.717	249	520	769	33.4	421	334	297	61	162	1761	76.6						

Games played: 23  
Points/game: 73.6  
FG Pct: 47.5  
3FG Pct: 35.8  
FT Pct: 76.4

Rebounds/game: 31.8  
Assists/game: 14.5  
Turnovers/game: 13.5  
Assist/turnover ratio: 1.1  
Steals/game: 6.3  
Blocks/game: 2.0

**Bemidji State University**  
**Bemidji State Game-by-Game Points-Rebounds-Assists (as of Feb 14, 2010)**  
**All games**

Opponent	Date	Score	02	03	11	12	13	15	25	32	34	
-----	----	-----	WL HAAKE,SET	RONGSTAD,	LINDSTROM	KREBS, JON	CASSIDY, P	LENDL, BUR	SHEPHERD,	TESDAHL, B	WALTERS, M	
vs College of the Ozark	11/20/09	60-54	W	7- 2- 0	0- 0- 0	2- 3- 1	DNP	12- 4- 1	DNP	DNP	12- 3- 5	DNP
at Viterbo University,	11/21/09	69-44	W	15- 8- 1	4- 3- 0	8- 2- 0	2- 1- 0	7- 7- 0	0- 1- 0	0- 1- 1	8- 4- 8	0- 1- 1
JAMESTOWN	11/24/09	69-72	L	17- 2- 3	DNP	5- 0- 1	DNP	6- 1- 1	DNP	DNP	9- 3- 2	DNP
at Purdue North Central	11-27-09	88-60	W	6- 3- 4	5- 6- 1	7- 3- 2	0- 1- 0	9- 4- 0	3- 0- 0	7- 0- 1	4- 1- 1	14- 4- 1
at Wisconsin-Parkside	11-28-09	65-78	L	17- 5- 3	2- 0- 0	2- 1- 0	DNP	13- 4- 0	DNP	0- 0- 0	5- 4- 3	DNP
MSUMMBB	12/04/09	71-73	L	16- 3- 3	8- 4- 0	6- 3- 0	0- 0- 0	20- 3- 2	5- 3- 0	0- 0- 1	12- 6- 7	0- 1- 0
UMCMBB	12/05/09	89-72	W	18- 5- 7	13- 4- 3	10- 6- 4	0- 0- 0	5- 2- 1	0- 3- 0	4- 3- 1	20- 6- 3	2- 1- 0
at Winona State	12/12/09	88-87	WO	25- 7- 1	19- 9- 5	8- 1- 2	DNP	8- 3- 1	0- 1- 0	2- 0- 0	20- 9-11	0- 0- 0
at Upper Iowa	12/13/09	80-91	L	21- 5- 2	13- 1- 0	14- 3- 6	DNP	8- 2- 3	5- 0- 0	3- 2- 2	8- 5- 6	0- 0- 0
at Northern Michigan	12/29/09	75-84	L	27- 5- 0	13- 8- 3	13- 2- 1	0- 0- 0	4- 2- 4	3- 2- 0	3- 1- 1	11- 7- 5	1- 0- 1
AUGIEMBB	01/02/10	73-80	L	24- 3- 2	16- 6- 2	5- 2- 3	DNP	8- 5- 1	3- 1- 1	0- 1- 0	7- 8- 4	0- 1- 0
WSCMBB	01/03/10	66-78	L	16- 2- 2	15- 6- 1	2- 4- 0	DNP	11- 4- 0	0- 1- 0	0- 0- 0	9- 1- 8	11- 1- 0
at Concordia University	01/08/10	76-110	L	19- 7- 2	4- 2- 2	12- 2- 2	2- 8- 1	7- 5- 2	2- 1- 0	11- 2- 2	6- 6- 3	9- 6- 0
at St. Cloud State Univ	01/09/10	69-80	L	15- 6- 2	12- 5- 3	DNP	0- 0- 0	14- 4- 2	1- 3- 1	2- 1- 2	15- 6- 4	10- 7- 0
NSU	01/15/10	65-67	L	18- 6- 3	13- 3- 3	9- 2- 2	DNP	2- 4- 2	2- 2- 0	2- 1- 0	11- 5- 4	5- 2- 0
MARYMEN	01/16/10	81-59	W	18- 2- 7	17- 7- 2	5- 2- 3	0- 1- 0	8- 2- 2	4- 3- 0	0- 0- 0	8-10- 5	9- 6- 0
UMD-MBB	1/23/10	71-69	W	23- 5- 2	15- 3- 0	5- 1- 0	DNP	4- 6- 1	2- 4- 2	3- 1- 1	4- 8- 6	12- 3- 0
at Minnesota State	1/29/10	66-108	L	8- 2- 2	10- 4- 2	12- 1- 2	6- 2- 0	4- 3- 1	6- 2- 0	2- 3- 3	6- 2- 2	8- 5- 2
at Southwest Minnesota	8/30/10	67-71	L	15- 3- 2	12- 1- 1	0- 2- 2	3- 0- 0	4- 4- 1	5- 1- 0	0- 0- 1	16- 6- 7	12- 3- 4
CONCORDIA UNIVERSITY, S2/5/2010		73-78	L	26- 4- 1	DNP	10- 0- 2	0- 0- 0	9- 4- 1	6-10- 0	0- 0- 0	10- 3- 8	12- 1- 2
ST. CLOUD STATE UNIVERS2/6/2010		71-107	L	17- 7- 3	DNP	9- 0- 2	0- 2- 1	13- 1- 0	2- 4- 2	7- 4- 1	10- 1- 1	9- 3- 3
at MSUMMBB	2/12/10	79-75	W	30- 3- 0	13- 8- 2	DNP	DNP	14- 7- 1	3- 7- 4	DNP	14- 9- 1	1- 3- 0
at UMCMBB	02/13/10	81-64	W	16- 6- 1	27- 5- 0	DNP	0- 0- 0	2- 1- 2	3- 2- 2	2- 0- 0	22- 5- 4	4- 1- 2

50

Opponent	Date	Score	WL BERTHENE,
-----	----	-----	-----
vs College of the Ozark	11/20/09	60-54	W 0- 0- 0
at Viterbo University,	11/21/09	69-44	W 2- 0- 0
JAMESTOWN	11/24/09	69-72	L 3- 0- 0
at Purdue North Central	11-27-09	88-60	W 8- 3- 2
at Wisconsin-Parkside	11-28-09	65-78	L 2- 1- 0
MSUMMBB	12/04/09	71-73	L 4- 2- 3
UMCMBB	12/05/09	89-72	W 17- 1- 1
at Winona State	12/12/09	88-87	WO 6- 2- 2
at Upper Iowa	12/13/09	80-91	L 8- 1- 0
at Northern Michigan	12/29/09	75-84	L 0- 0- 0
AUGIEMBB	01/02/10	73-80	L 10- 2- 0
WSCMBB	01/03/10	66-78	L 2- 0- 0
at Concordia University	01/08/10	76-110	L 4- 1- 0
at St. Cloud State Univ	01/09/10	69-80	L 0- 1- 0
NSU	01/15/10	65-67	L 3- 0- 0
MARYMEN	01/16/10	81-59	W 12- 1- 1
UMD-MBB	1/23/10	71-69	W 3- 2- 0
at Minnesota State	1/29/10	66-108	L 4- 2- 0
at Southwest Minnesota	8/30/10	67-71	L 0- 0- 0
CONCORDIA UNIVERSITY, S2/5/2010		73-78	L 0- 0- 1
ST. CLOUD STATE UNIVERS2/6/2010		71-107	L 4- 3- 1
at MSUMMBB	2/12/10	79-75	W 4- 0- 0
at UMCMBB	02/13/10	81-64	W 5- 2- 0