



# Bemidji State Men's Basketball

Week 14: Final two games - at UMD and WSC

Feb. 24, 27

## This Week

*Final Games of the Season*

**February 24**

**at Minnesota Duluth**  
**7-18 Overall (4-14 NSIC)**  
**Romano Gymnasium**  
**8 p.m.**

**February 27**

**at Wayne State College**  
**12-13 Overall (9-9 NSIC)**  
**Rice Auditorium**  
**6 p.m.**

## Next Up

**NSIC Tournament (Top 8)**  
**At top seed site**  
**March 3 • TBA**

## Multimedia

**Live stats at UMD:**

<http://sports.umbulldogs.com/MBB/xlive.htm>

**Live stats at WSC:**

<http://www.wsc.edu/athletics/mbb/stats/live/showstats.php>

**Live audio at WSC:**

<http://www.wscwildcats.com/sports/2008/8/29/broadcast.aspx?tab=internetbroadcasts>

**Watch all home and NSIC games live and for free on Penn Atlantic**

[www.northernsun.org](http://www.northernsun.org)

## Athletic Media Relations

Dax Larson

Asst. Director/MBB Contact

[dlarson@bemidjistate.edu](mailto:dlarson@bemidjistate.edu)

Cell: (612) 718-0729

## Beavers close 2009-10 season at UMD and WSC

**This Week:** The Bemidji State University men's basketball team is on the road to close the 2009-10 regular season Feb. 24 and 27. BSU travels to University of Minnesota Duluth Feb. 24 to play at 8 p.m. before heading south to Wayne State College (Neb.) Feb. 27 with that game slated for a 6 p.m. tip-off.

**About Bemidji State:** The Beavers are 11-14 overall and 7-11 in the NSIC to hold down the 11th spot in the league. BSU has won four in a row, downing MSU Moorhead (79-75) and Minnesota, Crookston (81-64) on the road, Finlandia University (99-67) in a nonconference home game and Winona State University (88-86) in its final home game of the season. The win against WSU gave the Beavers their first season-sweep of the Warriors since the 2002-03 season.

- In the four wins, BSU outscored its opponent 86.8-73.0. The Beavers lost their previous four games, getting outscored 91.0-69.3.
- Senior **Seth Haake** has 1,157 career points. With two games left, he is 34 points shy from cracking BSU's top-10 career points list.
- For his career, Haake is 51.1 percent from the field and 43.5 percent from the 3-point line.
- BSU is 2nd in the nation in free throw percentage at a 77.4 clip. Adelphi University (Garden City, N.Y.) is the nation's leader at 78.2.

### PROBABLE STARTERS

No.	Name	Yr.	Pos.	Ht.	Key Stats
2	Seth Haake	Sr.	G	6-3	18.2 ppg, 4.4 rpg, 55.7 FG% <i>Has scored 20-plus points nine times this season, BSU is 5-4 in those games.</i>
3	Lance Rongstad	Fr.	G	6-3	14.8 ppg, 4.7 rpg, 55.6 FG% in conf. <i>Was named NSIC Player of the Week Feb. 21 after career-high 29 in win vs WSU.</i>
13	Patrick Cassidy	Jr.	F	6-6	8.4 ppg, 3.8 rpg, 50.0 FG% <i>Scored nine points and added nine rebounds in win vs. WSU Feb. 20.</i>
15	Burke Lendl	Fr.	F	6-7	3.6 ppg, 2.9 rpg, 0.7 apg <i>Started the last 6 games, averaging 29.7 min, 6.5 pts and 6.0 reb per game.</i>
32	Bryce Tesdahl	So.	G/F	6-3	10.6 ppg, 5.0 rpg, 5.0 apg <i>Has eight games with at least seven assists, BSU is 4-4 in those games.</i>

### OFF THE BENCH

No.	Name	Yr.	Pos.	Ht.	Key Stats
11	Jake Lindstrom *	So.	G	6-0	7.2 ppg, 2.0 rpg, 87.8 FT%
12	Jon Krebs	Fr.	G	6-5	Has played in 14 games
25	Noah Shepherd	Fr.	G	6-2	2.9 ppg, 1.1 rpg, 51.2 FG%
34	Mason Walters	Fr.	G/F	6-7	6.3 ppg, 2.4 rpg, 0.9 apg
50	David Berthene	Fr.	F	6-9	4.9 ppg, 41.6 FG% in conf.

\* - Out for season due to injury

**About Minnesota Duluth:** The Bulldogs are 7-18 overall and 4-14 in the NSIC to hold the 13th spot in the standings. UMD has lost nine straight and are 2-12 in 2010. The Bulldogs are 6-6 at home, 4-4 in conference play. Sophomore Ryan Rasmussen is leading the team in scoring with 17.7 points per game, playing in 18 of the team's 25 games.

**Series History:** The Beavers are 36-82 all-time against the Bulldogs. BSU is 1-4 in the last five contests, earning that victory earlier this season at the BSU Gymnasium 71-69. The last time the Beavers swept the season-series with UMD was the 2001-02 season.

**About Wayne State:** The Wildcats are 12-13 overall and 9-9 in conference play to sit seventh in the NSIC. WSC is winners of its last three after falling in its last four. The Wildcats picked-up road wins last weekend against Northern State University (73-58) and University of Mary (76-53). WSC is 6-6 at home this season, 5-4 in conference play. Freshman Amry Shelby leads the team in points per game with 13.1 and 14.2 in NSIC games. Senior Brett Spiker has 12.5 points and a team-high 9.7 rebounds per game. WSC battles Southwest Minnesota State University Feb. 24 in its final road game of the season.

**Series History:** BSU is 13-25 all-time against the Wildcats. The Beavers are 1-4 in the last five games, losing earlier this season at the BSU Gymnasium 78-66.

**Last Action:** The Beavers earned a season-sweep of Winona State with a 88-86 win at the BSU Gymnasium Feb. 20.

**Feb. 20 - vs. Winona State:** Freshman **Lance Rongstad** (G/F, Eleva, Wis.) dropped a career-high 29 and senior guard **Seth Haake** (Eden Prairie, Minn.), playing in his final game at the BSU Gymnasium, scored 20 as the Bemidji State University men's basketball team closed the home portion of the 2009-10 season with a battle against Winona State University, prevailing victorious 88-86. The win makes four in a row for the Beavers and a season sweep of the Warriors. The last time BSU swept WSU in a season was 2003-04. The Beavers needed overtime to down the Warriors in Winona, Dec, 12, winning that game 88-87.

The Beavers (11-14, 7-11 NSIC) won the battle of the two best free throw shooting teams in the conference, going 33-of-38 (86.8%) from the line, which is almost 10 percent better than their season average of 76.7 percent heading into the contest. WSU (17-8 overall and 11-7 NSIC), who was shooting 76.2 percent from the charity stripe heading into the game, shot 14-of-23 (60.9%) in the game and 11-of-20 (55%) in the second half. Free throws were a key difference in the game that went right down to the wire. Rongstad had a career-high in free throws made and attempted, going 13-of-15.

The Warriors shot better from the field (50%-49%) and from beyond the arc (41.4%-38.5%), but the young BSU squad didn't

## 2009-10 Schedule

Date	Opponent	Time/Result
Nov. 4	Wisconsin (exh.)	L, 54-90
Nov. 8	North Dakota (exh.)	L, 63-65
Nov. 20	College of the Ozarks !	W, 60-54
Nov. 21	Viterbo University !	W, 69-44
<b>Nov. 24</b>	<b>Jamestown College</b>	<b>L, 69-72</b>
Nov. 27	Purdue North Central ^	W, 88-60
Nov. 28	UW-Parkside ^	L, 65-78
<b>Dec. 4</b>	<b>MSU Moorhead *</b>	<b>L, 71-73</b>
<b>Dec. 5</b>	<b>Minnesota, Crookston *</b>	<b>W, 89-72</b>
Dec. 12	Winona State *	W, 88-87 OT
Dec. 13	Upper Iowa *	L, 80-91
Dec. 29	Northern Michigan	L, 75-84
<b>Jan. 2</b>	<b>Augustana College *</b>	<b>L, 73-80</b>
<b>Jan. 3</b>	<b>Wayne State (Neb.) *</b>	<b>L, 66-78</b>
Jan. 8	Concordia University *	L, 76-110
Jan. 9	St. Cloud State *	L, 69-80
<b>Jan. 15</b>	<b>Northern State *</b>	<b>L, 65-67</b>
<b>Jan. 16</b>	<b>University of Mary *</b>	<b>W, 81-59</b>
<b>Jan. 23</b>	<b>Minnesota Duluth *</b>	<b>W, 71-69</b>
Jan. 29	Minnesota State *	L, 66-108
Jan. 30	Southwest Minn. St. *	L, 67-71
<b>Feb. 5</b>	<b>Concordia University *</b>	<b>L, 73-78</b>
<b>Feb. 6</b>	<b>St. Cloud State *</b>	<b>L, 71-107</b>
Feb. 12	MSU Moorhead *	W, 79-75
Feb. 13	Minnesota, Crookston *	W, 81-64
<b>Feb. 16</b>	<b>Finlandia</b>	<b>W, 99-67</b>
<b>Feb. 20</b>	<b>Winona State *</b>	<b>W, 88-86</b>
Feb. 24	Minnesota Duluth *	8 p.m.
Feb. 27	Wayne State (Neb.) *	6 p.m.
Mar. 2	NSIC Tournament	TBA

Home games in **Bold**

\* - Northern Sun Intercollegiate Conference game

exh. - Exhibition game

! - Viterbo Pepsi Tournament (La Crosse, Wis.)

^ - UW-Parkside Tournament (Kenosha, Wis.)

flinch, holding a lead for all but 43 seconds of the game. The tip-off was a battle that set the tone for the rest of the game. WSU found the ball to start and made its first shot to take a 2-0 lead. Haake responded with a 3-point dagger that gave BSU the one-point lead, a lead it wouldn't relinquish for the rest of the game. Haake made it 5-2, then Rongstad knocked-down a 3-pointer to give BSU an early 8-2 lead. A 5-0 run by the Warriors made it a one-point game, then the two teams traded hoops over the next six minutes, settling to a 17-16 score with 10:35 on the clock. BSU then rattled-off nine unanswered points to take a 26-16 lead with 7:18 left in the half. BSU got scoring from four different players in the run. The Warriors chipped-away at the deficit and found themselves down 30-27 with 3:19 remaining. The Beavers responded with a 6-2 run to close the first 20 minutes and held a 36-29 lead and the momentum heading into the locker room.

The Beavers kept their feet on the gas pedal to start the second half, tying their largest lead of the contest at 56-46 with 13:40 remaining in regulation. WSU then realized how bad a loss would be at this point of the season and went on a 15-6 run over 4:25 to cut the deficit to one at 62-61. Haake wasn't going to let his final home game slip away and converted an old school 3-point play to give BSU the 65-61 lead with 8:08 remaining. Then Rongstad followed with a deep 3-pointer to put BSU up seven. The Beavers were able to maintain at least a five-point lead until WSU made it a two-point deficit with 3:37 remaining at the score of 74-72. Then began the free throw show, as Rongstad started it making four from the charity stripe to give BSU the six point lead at 78-72 with 2:07 left. The Beavers were able to keep it to a two possession game with free throws, making 14-of-18 in the final 2:31, while WSU was 4-of-9 in the final 43 seconds. Winona State kept coming and scoring to make it a one-possession game, but BSU just kept dropping free throws. WSU's Ben Fischer scored a desperation 3-pointer with 11 seconds on the clock to cut the deficit to one. Then freshman **Burke Lendl** (F, St. Michael, Minn.) was fouled with six ticks on the clock. He made the first, but missed the second. Rongstad then hustled for the loose rebound, grabbing the ball as he was going out of bounds and then spiked it off a WSU player like he had just scored a touchdown at Chet Anderson Stadium, keeping the ball on BSU's end. He was fouled on the in-bounds play and then only made one of two shots, giving the home team a 88-85 lead with three seconds left.

Fischer was put to the line with two seconds left and two shots. He made the first, but then missed the second. After a scrum, WSU came-up with the ball and was again fouled with just four tenths of a second on the clock, giving them a chance to knot the game with two free throws. They missed the first, forcing them to try and get a rebound off the second. They tried to convert the play, but was called for a lane violation and the game ended with a deep pass to Rongstad.

Haake ended his career at the BSU Gymnasium by fouling

### **BEMIDJI STATE QUICK FACTS**

School/Enrollment:..... Bemidji State University (5,020)  
 Location/Founded:.....Bemidji, Minnesota 56601 (1919)  
 Population:..... 30,000 (reflects city and surrounding area)  
 Conference:..... Northern Sun Intercollegiate  
 Affiliation:.....NCAA Division II (NCAA I-Hockey)  
 Nickname:.....Beavers  
 School Colors:..... Green (PMS 3305) and White  
 Home Court:..... BSU Gymnasium (2,500)  
 Press Row Phone:..... (218) 755-3620  
 President:.....Dr. Jon Quistgaard (Arizona '79)  
 Athletic Director:..... Dr. Rick Goeb (North Dakota St. '89)  
 Senior Woman's Administrator:.....Sarah Levesque (North Dakota '00)  
 SWA Phone:..... (218) 755 2142  
 Head Athletic Trainer:..... Bill Crews  
 Athletic Trainer Phone:..... (218) 755-2769  
 Compliance Coordinator:.....Sarah Levesque  
 Compliance Phone:..... (218) 755-2142  
 Ticket Manager:.....Pam Papp  
 Tickets Phone:..... (218) 755-3993  
 Athletics Administrative Assistant:.....Debbie Slough  
 Athletic Phone:..... (218) 755-2941  
 Athletic Fax:..... (218) 755-3898

### **ATHLETIC MEDIA RELATIONS**

Director:.....Brad Folkestad (Bemidji State '01)  
 AMR Phone:..... (218) 755-4603  
 AMR Fax:..... (218) 755-3898  
 AMR Cell:..... (218) 308-1115  
 AMR Email:..... bfolkestad@bemidjistate.edu  
 Assistant AMR/Basketball:.....Dax Larson (Minnesota State '07)  
 Assistant Phone:..... (218) 755-2763  
 Assistant Cell:..... (612) 718-0729  
 Assistant Email:..... dl Larson@bemidjistate.edu  
 Graduate Assistant:.....Ross LaDue (Iowa State '09)  
 Graduate Assistant Email:..... gladue@bemidjistate.edu  
 Volleyball/Basketball Press Row:..... (218) 755-3620  
 Web site:..... www.bemidjistate.edu/athletics

### **PROGRAM HISTORY**

First year of men's basketball:..... 1921  
 Overall record (87 seasons):..... 895-1,026 (.465)  
 Years in post-season play:..... 5 (NAIA)  
 (National - 1940, 1941, 1942; District - 1984, '85)  
 ..... 1 (NCAA)  
 (North Central Regional - 2004)  
 Northern Intercollegiate (NIC) Championships:..... 8  
 .... (1940, 1941, 1942, 1951, 1952, 1954, 1957, 1967)  
 Northern Sun Intercollegiate (NSIC) Championships:..... 1 (2004)

### **COACHING STAFF**

Head Coach:.....Matthew Bowen (Indiana, 1995)  
 Men's Basketball Office Phone:..... (218) 755-2774  
 Record at School:..... 30-83 - Fourth season  
 Career Record:..... 30-83 - Fourth season  
 Assistant Coaches:..... Jeremy Tiers (Lakehead University '98)  
 Ryan Montgomery (Hamline University '06)

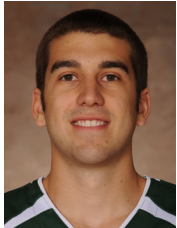
### **TEAM INFORMATION**

2008-09 Record:..... 8-19 (6-14 NSIC, T-10th)  
 Starters Returning/Lost:..... 4/1  
 Letterwinner Returning/Lost:..... 8/5  
 Newcomers..... 7

out of the contest. He scored 20 points in 26 minutes, on 7of-11 shooting. Rongstad added seven rebounds and two key blocks down the stretch. Junior forward **Patrick Cassidy** (St. Paul, Minn.) scored nine points and added nine rebounds, four on the offensive end. He also had four assists. Sophomore **Bryce Tesdahl** (G, Crosby, Minn.) played every minute of the game, scoring 14 points, while adding eight assists and four rebounds. Lendl had eight points and seven rebounds.

**NSIC Preseason Poll:** The Bemidji State men's basketball team is ranked ninth in the 2009-10 edition of the Northern Sun Intercollegiate Conference Preseason Coaches' Poll, receiving 89 points. The Beavers are coming off a year where they finished tied for 10th in the NSIC with a 6-14 record.

**NSIC Preseason Player to Watch:** Senior guard **Seth Haake** (Eden Prairie, Minn.) played and started in all 27 games for the Beavers in 2008-09, leading the team in points (13.9 p/g), rebounds (4.7 r/g), minutes (30.4 m/g) and steals (1.7 s/g), while finishing second on the team in assists (2.0 a/g). His 13.9 points per game was the most by a Beaver player since 2003-04 and ranked 12th in overall scoring in the NSIC. Haake earned his first career *NSIC Player of the Week* award after leading BSU in a 3-0 week, Jan. 6-10, which included wins over Dickinson State, Concordia University and St. Cloud State. He averaged 20.0 points, 6.7 rebounds and shot 60 percent from the floor in the three games. In NSIC play he averaged 13.9 points, 4.6 rebounds, 2.25 assists and shot .526 from the floor. Haake had a team-high 20 games in double-figures in scoring, including six games with over 20 points.



**Bowen in Season Openers:** Head coach **Matt Bowen** earned his first victory in season openers in his four seasons at BSU on Nov. 20. The Beavers defeated College of the Ozarks 60-54 at the Viterbo University Pepsi Tournament.

**Season Opener Record**

Date	Opponent	Site	Result
11/20/09	College of the Ozarks	La Crosse, Wis.	W, 60-54
11/18/08	Jamestown College	Bemidji, Minn.	L, 52-53
11/16/07	St. Cloud State	St. Cloud, Minn.	L, 61-86
11/15/06	Minnesota Duluth	Duluth, Minn.	L, 59-90

**Grand Accomplishment:** With a free throw with 4:38 remaining in a 71-69 win Jan. 23 against Minnesota Duluth, senior **Seth Haake** scored his 1,000th point of his career. He is the first Beaver to accomplish the feat since All-America selection Charles Hanks did so from 2001-04. He has 1,157 career points. With two games left, he is 34 points shy from cracking BSU's top-10 career points list.

**Making his mark on the NSIC:** Haake has 869 career points in NSIC play to rank 13th on the conference's career scoring chart. He joins Hanks (5th, 1,021) and David Lee (1984-88, 14th, 854) as players from BSU represented on the list.

**Making Strides:** Head coach **Matt Bowen** has increased BSU's win total every season over his past four years. The Beavers won five games in his first campaign, then six in his second and eight in 2008-09. This season, BSU has 11 wins with two games remaining. The seven NSIC victories the Beavers have totalled this season is the most conference wins under Bowen.

**Double-digits:** The Beavers have won 11 games this season, their first double-digit win mark since the 2005-06 team went 15-13.

**Two is Better than One:** Sophomore **Bryce Tesdahl** (G, Crosby, Minn.) posted 20 points, 11 assists and nine rebounds in a 88-87 overtime victory against No. 17 Winona State University Dec. 12, posting the first double-double of his career and the first by Beaver in 2009-10. Both the point and assist totals were career-highs and the nine rebounds tied a career-high.

**Thanks for the Charity:** Tesdahl is 97-of 111 from the charity stripe this season, posting a 87.4 percentage from the line that stands fourth in the NSIC and 26th in the nation.

**We're No. 2!:** BSU is standing 2nd in the nation this season in free throw percentage at a 77.4 mark. Adelphi University (Garden City, N.Y.) is the nation's leader at 78.2. The Beavers are first in the NSIC and its 78.5 percentage in conference play also ranks first.

**Helping Hand:** With 15.0 assists per game in conference play this season, the Beavers are fifth in the league. Tesdahl has 5.11 assists per game in league games, which is tied for third. With 5.04 apg in all games, Tesdahl is tied for second in the league and is 41st in the nation. Tesdahl has 126 assists this season to stand 6th on BSU's top season assists list. His 211 career assists ranks 7th on BSU's career list (1976-present).

#### **BSU's Top Season Assists**

#	Assists	Player	Season	Avg.
1.	167	James Roberson	2003-04	5.6
2.	145	Royce Bryan	2001-02	5.1
3.	142	Tyrone Terrill	1975-76	5.9
4.	135	James Roberson	2004-05	5.0
5.	129	Kevin Nichols	1993-94	5.0
6.	<b>126</b>	<b>Bryce Tesdahl</b>	<b>2009-10</b>	<b>4.9</b>

#### **BSU's Top Career Assist Totals (1976-Present)**

#	Assists	Player	Seasons
1.	314	David Lee	1984-88
2.	302	James Roberson	2003-05
3.	247	Royce Bryan	2002-03
	247	Tony Brown	1987-91
5.	233	Teaser Sweeney	1989-93
6.	212	B.J. LaVelle	1996-99
7.	<b>211</b>	<b>Bryce Tesdahl</b>	<b>2008-SA</b>

**Andrew Jackson:** Senior **Seth Haake** scored in the 20's four consecutive games Dec. 12-Jan. 2, pouring in a then season-high 27 against Northern Michigan Dec. 29. He has scored in the 20's nine times this season. He scored 23 against UMD Jan. 23 and 26 in a loss to Concordia University, Feb. 5. With a career-high 30 against MSUM Feb. 12, he posted is seventh 20-plus and first 30-plus point performance of the season and his career. His eighth came against Finlandia University, Feb. 16, when he scored 22 and the ninth was against WSU Feb. 20 with 20 points.

**National Ranking:** In the NCAA national ranking summary from games thru Feb. 21, BSU is 2nd in free throw percentage at a 77.4 clip. The Beavers are also in the top 80 (270 ranked) in, field goal percentage (48th, 48.2 percent), assist to turnover ratio (56th, 1.09 ratio), turnovers per game (67th, 13.6 tpg), three-point field goal percentage (68th, 36.5%) and assists per game (78th, 14.8 apg). Sophomore **Bryce Tesdahl** is 26th in free throw percentage at a 87.4 mark, 38th in assist to turnover ratio at a 2.21 clip and stands 41st in assists per game with 5.0 per contest. Senior **Seth Haake** is 52th in field goal percentage

with a 55.7 mark, 63rd in points per game with 18.2 ppg and 90th in steals per game at a 1.9 clip.

**Young Look:** The Beavers' active roster of 10 student-athletes consists of six true freshman, with only two upperclassmen. That makes 80 percent of the roster underclassmen. Last season, head coach **Matt Bowen** and his staff had to deal with 75 percent of the roster as underclassmen. In his first season (2006-07) Bowen inherited a team that had 7-of-12 (58%) players as upperclassmen. His second year balanced out at 52 percent underclassmen and 48 percent upperclassmen.

**Work Horses:** Four of the regular starters for the Beavers have logged at least 26.4 minutes per game in conference play this season, placing three of them in the top 30 in the conference rankings for minutes per game. Freshman **Lance Rongstad** has logged the second most minutes by a freshman this season with 29.0 minpg.

<b>Player</b>	<b>GP/GS</b>	<b>Rk</b>	<b>MPG</b>
Bryce Tesdahl	18/18	9	33.9
Seth Haake	18/18	10	33.7
Lance Rongstad	16/14	23	29.0
Patrick Cassidy	18/18	---	26.4

**It's Been a Long Time:** The Beavers earned an NSIC road sweep, Feb. 12-13, for the first time since the 2004-05 season. BSU defeated MSU Moorhead 79-75 before traveling to Minnesota, Crookston and winning 81-64. Senior **Seth Haake** scored a career-high 30 points to guide the Beavers to victory against the Dragons, then freshman **Lance Rongstad** (27) and sophomore **Bryce Tesdahl** (22) posted career-highs against the Golden Eagles.

**Warriors, Come out to Play:** With an 88-86 win at the BSU Gymnasium Feb. 20 against Winona State, BSU earned its first season-series sweep of the Warriors since 2003-04. The Beavers downed WSU 88-87 in overtime at the McCown Gymnasium Dec. 12.

**NSIC Honor:** Freshman guard/forward **Lance Rongstad** was named *Northern Sun Intercollegiate Conference Player of the Week* by the league office Feb. 22. The award is the first of his career and the first for BSU this season. According to Bemidji State records dating back to 1998-99, Rongstad is the first freshman to earn the league honor. Rongstad scored a career-high 29 points in the 88-86 victory against Winona State Feb, 20. In the game he shot 7-of-12 from the field, 2-of-4 from beyond the arc and 13-of-15 from the free throw line, establishing career-highs in both free throws made and attempted. In the game's final 2:31, Rongstad hit 10-of-12 free throws, had a steal and an offensive rebound off a missed free throw to keep the ball on BSU's end when the score was 87-85 and only four seconds on the clock. He added seven rebounds and two blocks, playing in 37 minutes in the game.

**BSU Loves the 80's:** The Beavers are 6-1 this season when scoring in the 80's.

**Bemidji St. (11-14)**  
**Men's Basketball National Ranking Summary**  
**Thru Games 02/21/2010**

[Back to team selections](#)  
[Northern Sun - All Teams](#)

Category	Rank	Actual	National Leader	Actual
Won-Lost Percentage (270 ranked)	176	44.0	Arkansas Tech	100.0
Scoring Offense (270 ranked)	104	75.2	West Liberty	106.1
Scoring Defense (270 ranked)	223	76.6	Clark Atlanta	54.1
Scoring Margin (270 ranked)	179	-1.4	West Liberty	27.8
Field-Goal Percentage (270 ranked)	35	48.2	BYU-Hawaii	51.7
Field-Goal Percentage Defense (270 ranked)	223	46.1	St. Augustine's	36.2
Three-Point Field Goals Per Game (270 ranked)	129	6.3	West Liberty	13.7
Three-Point Field-Goal Percentage (216 ranked)	68	36.5	Fla. Southern	44.9
Three Pt FG Defense (270 ranked)	250	37.9	Johnson C. Smith	25.2
Free-Throw Percentage (270 ranked)	2	77.4	Adelphi	78.2
Rebound Margin (270 ranked)	174	-0.8	Oakland City	12.6
Assists Per Game (270 ranked)	78	14.8	West Liberty	24.0
Assist Turnover Ratio (270 ranked)	56	1.09	West Liberty	1.82
Blocked Shots Per Game (270 ranked)	229	2.1	Bowie St.	7.0
Steals Per Game (270 ranked)	189	6.5	West Liberty	12.4
Turnovers Per Game (270 ranked)	67	13.6	Mary	9.6
Turnover Margin (270 ranked)	156	-0.5	West Liberty	8.1
Personal Fouls Per Game (270 ranked)	157	19.1	Pitt.-Johnstown	13.2

Category	Player	Rank	Actual	National Leader	Actual
Points Per Game (500 ranked)	Seth Haake	63	18.2	Stephen Dennis, Kutztown	27.0
	Lance Rongstad	430	12.4		
Field-Goal Percentage (262 ranked)	Seth Haake	52	55.7	Kevin Kotzur, St. Mary's (TX)	67.1
Three-Point Field Goals Per Game (500 ranked)	Seth Haake	115	2.2	Jamar Board, Alderson-Broaddus	5.0
Three-Point Field-Goal Percentage (68 ranked)				Keaton Shultz, Newman	54.7
Free-Throw Percentage (500 ranked)	Bryce Tesdahl	26	87.4	Girod Adams, Northwest Mo. St.	93.0
	Seth Haake	111	80.5		
	Lance Rongstad	147	79.2		
Rebounds Per Game (500 ranked)	Bryce Tesdahl	466	5.0	Nathan Schumacher, Oakland City	14.5
Assists Per Game (500 ranked)	Bryce Tesdahl	41	5.0	D.J. Ferguson, Flagler	9.6
Blocked Shots Per Game (500 ranked)				Marcus Connor, St. Andrews	4.8
Steals Per Game (500 ranked)	Seth Haake	90	1.9	Danny Sanders, Mars Hill	3.6
Assist Turnover Ratio (253 ranked)	Bryce Tesdahl	38	2.21	Alex Moosmann, CMoSt	4.68

**Beavers in the NSIC  
(Overall)**

**Scoring**

1 David Johnson (WSU)	19.9
<b>3 Seth Haake</b>	<b>18.2</b>
<b>18 Lance Rongstad</b>	<b>12.4</b>
<b>30 Bryce Tesdahl</b>	<b>10.6</b>

**Rebounding**

1 Matt Schneck (SCSU)	10.6
<b>13 Bryce Tesdahl</b>	<b>5.0</b>

**Field Goal Percentages**

1 Brian Metz (WSC)	65.2
<b>9 Seth Haake</b>	<b>55.7</b>
<b>12 Lance Rongstad</b>	<b>51.9</b>

**Free Throw Percentages**

1 Mitch Boeck (NSU)	92.0
<b>4 Bryce Tesdahl</b>	<b>87.4</b>
<b>10 Seth Haake</b>	<b>80.5</b>
<b>14 Lance Rongstad</b>	<b>79.2</b>

**3-point Field Goal Percentages**

1 Jon Walburg (WSU)	51.7
<b>9 Seth Haake</b>	<b>48.3</b>

**3-Point Field Goals Made**

1 Derek Hoellein (NSU)	75
<b>T7 Seth Haake</b>	<b>56</b>

**Assists**

1 Ben Fischer (WSU)	7.74
<b>T2 Bryce Tesdahl</b>	<b>5.04</b>

**Steals**

1 Jordan Dalton (AUGIE)	2.16
<b>3 Seth Haake</b>	<b>1.88</b>

**Assist/Turnover Ratio**

1 Jesse Clark (MSU)	3.77
<b>5 Bryce Tesdahl</b>	<b>2.21</b>

**Minutes Played**

1 Anthony Moody (Mary)	36.84
<b>6 Bryce Tesdahl</b>	<b>33.08</b>
<b>10 Seth Haake</b>	<b>31.08</b>
<b>28 Patrick Cassidy</b>	<b>26.17</b>

\* To be ranked, a player must appear in at least 75.0% of their team's games.

**COMPARISON IN NSIC STATISTICS  
(Overall)**

**MINNESOTA DULUTH**

66.6, 13TH	
76.4, 11TH	◀
72.2, 7TH	
40.4, 14TH	
37.0, 6TH	◀
-6.4, 14TH	
3.76, 4TH	◀
11.48, 13TH	
-1.12, 8TH	

**WAYNE STATE**

66.6, 12TH	
64.4, 1ST	◀
69.9, 12TH	
48.7, 3RD	◀
38.3, 3RD	◀
+6.4, 1ST	◀
1.92, 13TH	
11.92, 12TH	
-4.00, 14TH	

**BEMIDJI STATE**

<b>SCORING OFFENSE</b>	▶	6TH, 75.2
<b>SCORING DEFENSE</b>		12TH, 76.6
<b>FREE THROW %</b>	▶	1ST, 77.4
<b>FIELD GOAL %</b>	▶	5TH, 48.2
<b>3-POINT FG %</b>		9TH, 36.5
<b>REBOUNDING MARGIN</b>	▶	11TH, -0.8
<b>BLOCKED SHOTS</b>		12TH, 2.08
<b>ASSISTS</b>	▶	5TH, 14.84
<b>TURNOVER MARGIN</b>	▶	7TH, -0.52

**BEMIDJI STATE**

<b>SCORING OFFENSE</b>	▶	6TH, 75.2
<b>SCORING DEFENSE</b>		12TH, 76.6
<b>FREE THROW %</b>	▶	1ST, 77.4
<b>FIELD GOAL %</b>		5TH, 48.2
<b>3-POINT FG %</b>		9TH, 36.5
<b>REBOUNDING MARGIN</b>		11TH, -0.8
<b>BLOCKED SHOTS</b>	▶	12TH, 2.08
<b>ASSISTS</b>	▶	5TH, 14.84
<b>TURNOVER MARGIN</b>	▶	7TH, -0.52

**Beavers in the NSIC  
(Conference Only)**

**Scoring**

1 Anthony Moody (MARY)	20.3
<b>2 Seth Haake</b>	<b>19.2</b>
<b>14 Lance Rongstad</b>	<b>14.8</b>
<b>25 Bryce Tesdahl</b>	<b>11.8</b>

**Rebounding**

1 Brett Spiker (WSC)	10.9
<b>T11 Bryce Tesdahl</b>	<b>5.6</b>
<b>20 Lance Rongstad</b>	<b>4.7</b>

**Field Goal Percentages**

1 Brian Metz (WSC)	66.3
<b>7 Lance Rongstad</b>	<b>55.6</b>
<b>13 Seth Haake</b>	<b>54.1</b>

**Free Throw Percentages**

1 Jake Driscoll (MSUM)	92.4
<b>5 Jake Lindstrom</b>	<b>88.6</b>
<b>7 Bryce Tesdahl</b>	<b>87.2</b>

**Steals**

1 Jefferson Mason (MSU)	2.17
<b>3 Seth Haake</b>	<b>1.83</b>

**3-point Field Goal Percent**

1 Jon Walburg (WSU)	57.8
<b>4 Seth Haake</b>	<b>49.4</b>
<b>10 Lance Rongstad</b>	<b>44.4</b>

**3-point Field Goals Made**

1 Derek Hoellein (NSU)	56
<b>5 Seth Haake</b>	<b>44</b>

**Assists**

1 Ben Fischer (WSU)	8.06
<b>T3 Bryce Tesdahl</b>	<b>5.11</b>

**Assist/Turnover Ratio**

1 Jesse Clark (MSU)	3.53
<b>6 Bryce Tesdahl</b>	<b>2.24</b>

**Minutes Played**

1 Anthony Moody (Mary)	38.94
<b>9 Bryce Tesdahl</b>	<b>33.89</b>
<b>10 Seth Haake</b>	<b>33.67</b>
<b>22 Lance Rongstad</b>	<b>29.00</b>

\* To be ranked, a player must appear in at least 75.0% of their team's games.

**BEAVERS' 2009-10 RECORD WHEN...**

<b>MONTH</b>	
Plays in November .....	3-2
Plays in December .....	2-3
Plays in January .....	2-7
Plays in February .....	4-2
Plays in March .....	0-0

<b>DAY OF THE WEEK</b>	
Plays on Sunday .....	0-2
Plays on Monday .....	0-0
Plays on Tuesday .....	1-2
Plays on Wednesday .....	0-0
Plays on Thursday .....	0-0
Plays on Friday .....	3-5
Plays on Saturday .....	7-5

<b>TIME OF DAY</b>	
Plays during the day (Before 6 p.m.) .....	6-4
Plays at night .....	5-10

<b>LOCATION</b>	
Plays at home .....	5-7
Plays on the road .....	4-7
Plays at a neutral site .....	2-0

<b>CONFERENCE</b>	
Record vs. the NSIC .....	7-11
Nonconference opponents .....	3-3
In Region .....	7-11
vs. NAIA or Division III .....	4-1

<b>HALFTIME SCORE</b>	
Leads at half .....	9-5
Trails at half .....	2-9
Tied at half .....	0-0

<b>MARGIN</b>	
Margin is 5 points or less .....	4-5
Margin is 10 points or less .....	1-2
Margin is between 11-20 .....	2-4
Margin is more than 20 .....	4-3

<b>POINTS SCORED</b>	
Scores 59 points or less .....	0-0
Scores 60+ points .....	2-7
Scores 70+ points .....	2-6
Scores 80+ points .....	6-1
Scores 90+ points .....	1-0
Scores 100+ points .....	0-0

<b>SHOOTING</b>	
Shoots 50% or better .....	6-2
Shoots less than 50% .....	4-11
Opponent shoots 50% or less .....	10-7
Shoots better than opponent .....	9-5
Shoots worse than opponent .....	2-9

<b>FREE THROWS</b>	
Has more FTs made than opponent .....	9-5
Has equal FTs made than opponent .....	0-2
Has less FTs made than opponent .....	2-7

<b>REBOUNDING</b>	
More rebounds than opponent .....	8-2
Less rebounds than opponent .....	2-12
Has equal rebounds .....	1-0

<b>TURNOVERS</b>	
Has more TOs than opponent .....	5-7
Has equal or less TOs than opponent .....	6-7

<b>MISCELLANEOUS</b>	
vs. Nationally-ranked opponent .....	1-2
In tournament play .....	3-1
Plays an overtime game .....	1-0
Win the game before .....	6-4
Loses the game before .....	4-10
Makes 5+ 3-point shots .....	11-8
Has 20+ assists .....	4-0
Has a 20-plus-point scorer .....	7-5
Has equal/more bench points .....	5-2
Has less bench points .....	4-14

**DOUBLE-DOUBLES**

Player	Opponent (Date)	Points	Rebs.	Assts
Bryce Tesdahl	Winona State (12/12)	20	---	11

**Breakdown:** Tesdahl (1) - **Total:** 1

**30-POINT GAMES**

Player	Opponent (Date)	Points
Seth Haake	MSU Moorhead (2/12)	30

**Breakdown:** Haake (1) - **Total:** 1

**20-POINT GAMES**

Player	Opponent (Date)	Points
Patrick Cassidy	MSU Moorhead (12/4)	20
Bryce Tesdahl	Minnesota, Crookston (12/5)	20
Seth Haake	Winona State (12/12)	25
Bryce Tesdahl	Winona State (12/12)	20
Seth Haake	Upper Iowa (12/13)	21
Seth Haake	Northern Michigan (12/29)	27
Seth Haake	Augustana (1/2)	24
Seth Haake	Minnesota Duluth (1/23)	23
Seth Haake	Concordia University (2/5)	26
Lance Rongstad	Minnesota, Crookston (2/13)	27
Bryce Tesdahl	Minnesota, Crookston (2/13)	22
Seth Haake	Finlandia University (2/16)	22
Seth Haake	Winona State (2/20)	20
Lance Rongstad	Winona State (2/20)	29

**Breakdown:** Cassidy (1), Haake (8), Rongstad (2), Tesdahl (3) - **Total:** 14

**10-REBOUND GAMES**

Player	Opponent (Date)	Rebounds
Bryce Tesdahl	University of Mary (1/16)	10
Burke Lendl	Concordia University (2/5)	10

**Breakdown:** Lendl (1), Tesdahl (1) - **Total:** 2

**10-ASSIST GAMES**

Player	Opponent (Date)	Assists
Bryce Tesdahl	Winona State (12/12)	11
Bryce Tesdahl	Finlandia Universtiy (2/16)	10

**Breakdown:** Tesdahl (2) - **Total:** 2

**5-BLOCK GAMES**

Player	Opponent (Date)	Blocks
None		

**Breakdown:** None - **Total:** 0

**5-STEAL GAMES**

Player	Opponent (Date)	Steals
Seth Haake	St. Cloud State (1/9)	5
Bryce Tesdahl	Minnesota, Crookston	5
Seth Haake	Finlandia University	5

**Breakdown:** Haake (2), Tesdahl (1) - **Total:** 3

# Bemidji State Player Season/Career Highs

## #2 Seth Haake • Sr. • G • 6-3 • 176 • Eden Prairie, Minn.

Season	Career
<b>Points:</b> 30 at MSU Moorhead (2/12)	30 at MSU Moorhead (2/12/10)
<b>FG made:</b> 11 at MSU Moorhead (2/12)	11 at MSU Moorhead (2/12/10)
<b>FG attempts:</b> 17, 3x, last at SW Minnesota State (1/30)	19 at Northern State (1/16/09)
<b>3Pt FG made:</b> 5, 2x, last at MSU Moorhead (2/12)	5, 2x, last at MSU Moorhead (2/12/10)
<b>3Pt FG attempts:</b> 9 at Winona State (12/12)	9 at Winona State (12/12/09)
<b>FT made:</b> 7 vs. Augustana (1/2)	12 vs. Wayne State (2/28/09)
<b>FT attempts:</b> 9 vs. Augustana (1/2)	13 vs. Wayne State (2/28/09)
<b>Rebounds:</b> 8 at Viterbo (11/21)	8, 2x, last time at Viterbo (11/21/09)
<b>Assists:</b> 7, 2x, last vs. University of Mary (1/16)	7, 2x, last vs. University of Mary (1/16/10)
<b>Steals:</b> 5 at St. Cloud State (1/9)	5, 3x, last time at St. Cloud State (1/9/10)
<b>Blocked Shots:</b> 2, 2x, last at MSU Moorhead (2/12)	2, 3x, last at MSU Moorhead (2/12/10)
<b>Minutes:</b> 40, 2x, last at MSU Moorhead (2/12)	48 at Northern State (1/16/09)

## #13 Patrick Cassidy • Jr. • F • 6-6 • 209 • St. Paul, Minn.

Season	Career
<b>Points:</b> 20 vs. MSU Moorhead (12/4)	26 vs. Minnesota Duluth (2/25/09)
<b>FG made:</b> 8 vs. MSU Moorhead (12/4)	11, 2x, last vs. Minnesota Duluth (2/25/09)
<b>FG attempts:</b> 12, 2x, last vs. MSU Moorhead (12/4)	16 vs. Minnesota Duluth (2/25/09)
<b>3Pt FG made:</b> 1 vs. MSU Moorhead (12/4)	3 at MSU Moorhead (12/7/07)
<b>3Pt FG attempts:</b> 5 vs. MSU Moorhead (12/4)	5 vs. MSU Moorhead (12/4/09)
<b>FT made:</b> 4, 2x, last at MSU Moorhead (2/12)	7 vs. Northern College (11/25/07)
<b>FT attempts:</b> 8 at MSU Moorhead (2/12)	8, 2x, last at MSU Moorhead (2/12/10)
<b>Rebounds:</b> 9 vs. Winona State (2/20)	13 vs. Minnesota, Crookston (1/05/08)
<b>Assists:</b> 4, 2x, last vs. Winona State (2/20)	4, 4x, last vs. Winona State (2/20)
<b>Steals:</b> 2, 3x, last vs. Concordia University (2/6/10)	2, 8x, last vs. Concordia Univ., St. Paul, (2/5/10)
<b>Blocked Shots:</b> 2, 2x, last at Upper Iowa (12/13)	2, 4x, last at Upper Iowa (12/13/09)
<b>Minutes:</b> 36, 2x, last vs. Winona State (2/20)	47 vs. Minnesota Duluth (2/25/09)

## #11 Jake Lindstrom • So. • G • 6-0 • 175 • Cottage Grove, Minn.

Season	Career
<b>Points:</b> 14 at Upper Iowa (12/13)	25 vs. UW-River Falls (12/20/08)
<b>FG made:</b> 5 at Northern Michigan (12/29)	8 vs. UW-River Falls (12/20/08)
<b>FG attempts:</b> 11 at Northern Michigan (12/29)	21 vs. UW-RF (12/20/08)
<b>3Pt FG made:</b> 3 at Northern Michigan (12/29)	3, 5x, last at Northern Michigan (12/29/09)
<b>3Pt FG attempts:</b> 7 at Northern Michigan (12/29)	10 at Dickinson State (1/6/09)
<b>FT made:</b> 4, 4x, last vs. Concordia University (2/5)	8 at Minnesota Duluth (2/25/09)
<b>FT attempts:</b> 5 at Minnesota State (1/29)	10 at Concordia University (1/9/09)
<b>Rebounds:</b> 6 vs. Minnesota, Crookston (12/5)	7 at Dickinson State (1/6/09)
<b>Assists:</b> 6 at Upper Iowa (12/13)	6 at Upper Iowa (12/13/09)
<b>Steals:</b> 4 vs. Minnesota, Crookston (12/5)	4 vs. Minnesota, Crookston (12/5/09)
<b>Blocked Shots:</b> 1 at Concordia University (1/8)	1, 7x, last at Concordia University (1/8/10)
<b>Minutes:</b> 34 at Upper Iowa (12/13)	47 at Dickinson State (1/6/09)

## #32 Bryce Tesdahl • So. • G • 6-3 • 195 • Crosby, Minn.

Season	Career
<b>Points:</b> 22 at Minnesota, Crookston (2/13)	22 at Minnesota, Crookston (2/13/10)
<b>FG made:</b> 6, 2x, last at Minnesota, Crookston (2/13)	6, 3x, last at Minnesota, Crookston (2/13/10)
<b>FG attempts:</b> 11 at Winona State (12/12)	11, 2x, last at Winona State (12/12/09)
<b>3Pt FG made:</b> 3 at Northern Michigan (12/29)	3 at Northern Michigan (12/29/09)
<b>3Pt FG attempts:</b> 6 at Northern Michigan (12/29)	6 at Northern Michigan (12/29/09)
<b>FT made:</b> 10 vs. College of Ozarks (11/20)	10 vs. College of Ozarks (11/20/09)
<b>FT attempts:</b> 11 at Minnesota, Crookston (2/13)	11 at Minnesota, Crookston (2/13/10)
<b>Rebounds:</b> 10 vs. University of Mary (1/16)	10 vs. University of Mary (1/16/10)
<b>Assists:</b> 11 at Winona State (12/12)	11 at Winona State (12/12/09)
<b>Steals:</b> 5 at Minnesota, Crookston (2/13)	5, 2x, last at Minnesota, Crookston (2/13/10)
<b>Blocked Shots:</b> 1, 2x, last vs. Northern State (1/15)	1, 6x, last vs. Northern State (1/15/10)
<b>Minutes:</b> 43 at Winona State (12/12)	43, 2x, at Winona State (12/12/09)

## #50 David Berthene • Fr. • F 6-9 • 185 • Lakeville, Minn.

<b>Points:</b> 17 vs. Minnesota, Crookston (12/5)
<b>FG made:</b> 7 vs. Minnesota, Crookston (12/5)
<b>FG attempts:</b> 11 vs. Minnesota, Crookston (12/5)
<b>3Pt FG made:</b> 3 vs. Minnesota, Crookston (12/5)
<b>3Pt FG attempts:</b> 5, 2x, last vs. Minnesota, Crookston (12/5)
<b>FT made:</b> 4 vs. University of Mary (1/16)
<b>FT attempts:</b> 4 vs. University of Mary (1/16)
<b>Rebounds:</b> 5 vs. Finlandia (2/16)
<b>Assists:</b> 3, 2x, last vs. Finlandia (2/16)
<b>Steals:</b> 1, 3x, last at Minnesota, Crookston (2/13)
<b>Blocked Shots:</b> 1, 6x, last vs. Finlandia (2/16)
<b>Minutes:</b> 34 vs. Finlandia (2/16)

## #12 Jon Krebs • Fr. • G 6-5 • 184 • Mahtomedi, Minn.

<b>Points:</b> 6 at Minnesota State (1/29)
<b>FG made:</b> 2 at Minnesota State (1/29)
<b>FG attempts:</b> 6 at Concordia University (1/8)
<b>3Pt FG made:</b> none
<b>3Pt FG attempts:</b> 3 at Concordia University (1/8)
<b>FT made:</b> 2, 3x, last vs. Finlandia (2/16)
<b>FT attempts:</b> 4 vs. Finlandia (2/16)
<b>Rebounds:</b> 8 at Concordia University (1/8)
<b>Assists:</b> 2 vs. Finlandia (2/16)
<b>Steals:</b> 2 vs. Finlandia (2/16)
<b>Blocked Shots:</b> 1 vs. Finlandia (2/16)
<b>Minutes:</b> 21 vs. Finlandia (2/16)

## #15 Burke Lendl • Fr. • F

<b>6-7 • 188 • St. Michael, Minn.</b>
<b>Points:</b> 17 vs. Finlandia (2/16)
<b>FG made:</b> 5 vs. Finlandia (2/16)
<b>FG attempts:</b> 6, 3x, last vs. Finlandia (2/16)
<b>3Pt FG made:</b> 2 vs. Finlandia (2/16)
<b>3Pt FG attempts:</b> 2, 3x, last vs. Finlandia (2/16)
<b>FT made:</b> 5 vs. Finlandia (2/16)
<b>FT attempts:</b> 6 vs. Finlandia (2/16)
<b>Rebounds:</b> 10 vs. Concordia Univ., St. Paul (2/5)
<b>Assists:</b> 4 at MSU Moorhead (1/23)
<b>Steals:</b> 2, 3x, last at Minnesota, Crookston (2/13)
<b>Blocked Shots:</b> 1, 5x, last vs. Finlandia (2/16)
<b>Minutes:</b> 33 at MSU Moorhead (2/12)

## #3 Lance Rongstad • Fr. • G 6-3 • 200 • Eleva, Wis.

<b>Points:</b> 29 vs. Winona State (2/20)
<b>FG made:</b> 8, 2x, last at Minnesota, Crookston (2/13)
<b>FG attempts:</b> 15, 2x, last vs. Minnesota Duluth (1/23)
<b>3Pt FG made:</b> 3 at Winona State (12/12)
<b>3Pt FG attempts:</b> 4 vs. Winona State (2/20)
<b>FT made:</b> 13 vs. Winona State (2/20)
<b>FT attempts:</b> 15 vs. Winona State (2/20)
<b>Rebounds:</b> 9 at Winona State (12/12)
<b>Assists:</b> 5 at Winona State (12/12)
<b>Steals:</b> 3 vs. Northern State (1/15)
<b>Blocked Shots:</b> 2 vs. Winona State (2/20)
<b>Minutes:</b> 42 at Winona State (12/12)

## #25 Noah Shepherd • Fr. • G 6-2 • 167 • Minneapolis, Minn.

<b>Points:</b> 12 vs. Finlandia (2/16)
<b>FG made:</b> 5 at Concordia University (1/8)
<b>FG attempts:</b> 8 at Concordia University (1/8)
<b>3Pt FG made:</b> 2, 2x, last vs. Finlandia (2/16)
<b>3Pt FG attempts:</b> 3 at MSU Moorhead (2/12)
<b>FT made:</b> 2, 3x, last vs. Finlandia (2/16)
<b>FT attempts:</b> 4 vs. St. Cloud State (2/6)
<b>Rebounds:</b> 4, 2x, last vs. Finlandia (2/16)
<b>Assists:</b> 3 at Minnesota State (1/29)
<b>Steals:</b> 2 vs. Finlandia (2/16)
<b>Blocked Shots:</b> 1 at Minnesota State (1/29)
<b>Minutes:</b> 26 at Minnesota State (1/29)

## #34 Mason Walters • Fr. • G/F 6-7 • 200 • Milton, Wis.

<b>Points:</b> 14, 2x, last vs. Finlandia (2/16)
<b>FG made:</b> 4, 5x, last vs. Concordia Univ., St. Paul (2/5)
<b>FG attempts:</b> 10 at Minnesota State (1/29)
<b>3Pt FG made:</b> 2, 3x, last vs. Concordia Univ. (2/5)
<b>3Pt FG attempts:</b> 4, 2x, last at Minnesota State (1/29)
<b>FT made:</b> 8 at Purdue North Central (11/27)
<b>FT attempts:</b> 8 at Purdue North Central (11/27)
<b>Rebounds:</b> 7 at St. Cloud State (1/9)
<b>Assists:</b> 4 at SW Minnesota State (1/30)
<b>Steals:</b> 1, 4x, last vs. Winona State (2/20)
<b>Blocked Shots:</b> 1, 2x, last vs. Minnesota Duluth (1/23)
<b>Minutes:</b> 29 vs. Minnesota Duluth (1/23)

**Preseason NABC Division II Coaches Poll  
(As of 2/23/2010)**

<i>Rk</i>	<i>School</i>	<i>W-L</i>	<i>Points</i>	<i>Prev</i>
1	Arkansas Tech (8)	25-0	200	1
2	Central Mo.	24-1	192	3
3	Augusta St.	24-2	184	5
4	Ky. Wesleyan	27-3	172	6
<b>5</b>	<b><i>Minn. St. Mankato</i></b>	<b>23-2</b>	<b>168</b>	7
6	Indiana (Pa.)	22-2	158	8
7	Midwestern St.	24-2	151	9
8	Valdosta St.	23-3	142	4
9	Seattle Pacific	20-3	133	11
10	Southern Ind.	23-3	124	2
11	Fla. Southern	22-3	120	12
12	West Liberty St.	22-1	119	14
13	Rollins	21-4	92	18
14	Bentley	22-4	89	10
15	Fort Hays St.	20-5	87	12
<b>16</b>	<b><i>St. Cloud St.</i></b>	<b>21-4</b>	<b>78</b>	<b>20</b>
17	Georgia College	20-4	66	23
18	Stonehill	22-4	62	22
<b>19</b>	<b><i>Augustana (S.D.)</i></b>	<b>20-5</b>	<b>42</b>	<b>19</b>
20	Clark Atlanta	21-4	37	NR
21	West Virginia St.	22-3	35	NR
22	Drury	22-5	32	NR
23	Mesa St.	20-4	30	15
24	Western Wash.	22-5	28	21
25	Kutztown	20-5	18	16

**OTHERS RECEIVING VOTES:** Central Oklahoma 11, East Stroudsburg (PA) 11, Metropolitan State (CO) 10, Mount Olive (NC) 4, Cal Poly Pomona 2, Bellarmine (KY) 1, Quincy (IL) 1, Tarleton State (TX) 1.

**DROPPED OUT:** No. 17 East Stroudsburg, No. 24 St. Augustine's, No. 25 Central Oklahoma.

*Bold Italics - NSIC member*

**Division II Bulletin  
Preseason Top 25**

<b>Rk-Team</b>
1-Brigham Young-Hawaii
2-Findlay
3-Southwest Baptist
4-Cal Poly-Pomona
5-Bellarmine
6-Tusculum
7-Merrimack
8-Augusta State
9-Florida Southern
10-Bentley
11-Valdosta State
<b>12-Southwest Minnesota</b>
13-Metropolitan State
14-Central Missouri
<b>15-Winona State</b>
16-Kutztown
17-Central Oklahoma
18-Grand Valley State
19-Philadelphia
20-Northern Kentucky
21-Delta State
22-Rollins
23-Johnson C. Smith
24-West Virginia State
25-Incarnate Word

**Others to watch:** Barton, Cal State-San Bernardino, Catawba, Christian Brothers, Claflin, Dallas Baptist, Fort Hays State, Gannon, Massachusetts-Lowell, New Mexico Highlands, Seattle Pacific, Southern Indiana, Tarleton State, South Carolina-Aiken, Virginia Union

*Italics - NSIC member*

**Northern Sun Standings  
(As of Feb. 15)**

<b>Team</b>	<b>NSIC</b>	<b>All</b>
1 Minnesota State	16-2	23-2
2 St. Cloud State	15-3	21-4
3 Augustana	13-5	20-5
4 Winona State	11-7	17-8
5 Mary	10-8	14-11
Concordia University	10-8	13-12
7 Wayne State (Neb.)	9-9	12-13
8 Southwest MSU	8-10	13-11
Northern State	8-10	12-13
Upper Iowa	8-10	11-14
<b>11 Bemidji State</b>	7-11	11-14
12 MSU Moorhead	6-12	9-16
13 Minnesota Duluth	4-14	7-18
14 Minnesota, Crookston	1-17	5-20

**2009-10 NSIC MBB Coaches  
Preseason Poll**

<b>No.</b>	<b>Team (First Place)</b>	<b>Points</b>
1.	St. Cloud State (3)	171
2.	Winona State (6)	169
3.	Minnesota State (2)	164
4.	SMSU (2)	143
5.	Augustana	136
6.	Concordia-St. Paul	117
7.	Northern State	113
8.	Minnesota Duluth	97
<b>9.</b>	<b>Bemidji State</b>	<b>89</b>
10.	Wayne State	65
11.	MSU Moorhead	60
12.	Upper Iowa	59
13.	University of Mary	45
14.	Minnesota, Crookston	28

# MATT BOWEN

## HEAD COACH - FOURTH SEASON

**Matt Bowen** became the 19th head men's basketball coach at Bemidji State University June 30, 2006. He enters his fourth season as head coach at Bemidji State after spending 15 years as an assistant coach at the Division I level. The River Falls, Wis. native has improved the Beavers' record in each season. Last season, BSU went 8-19 overall and 6-14 in the Northern Sun Intercollegiate Conference, finishing tied for 10th. Bowen guided his team to a 6-21 overall record and a 3-15 record in the NSIC for a ninth place finish in 2007-08 and was 5-23 overall and 5-13 in the NSIC in 2006-07. Bowen and his staff are still in the rebuilding stages as he was met with the challenge of repairing a team that went 15-13 overall and 9-5 in the NSIC that was dismantled at the conclusion of the 2005-06 season. Bowen inherited a team that carried over just three players from the 2005-06 squad. In the process of rebuilding there are bumps along the road, but the Beavers are making strides in the right direction, defeating back-to-back nationally ranked opponents during a four-game winning streak last season (Jan. 6-16). BSU beat No. 24 St. Cloud State University at home, 69-66, and then traveled to No. 11 Northern State University and won a two overtime thriller 100-93. In the process of rebuilding, Bowen and his staff have recruited and brought in some of the best talent from around the state of Minnesota to help put the pieces of the BSU men's basketball program back together.

Bowen comes to BSU after spending the past 15 years molding his coaching style after some of NCAA Division I men's basketball's greatest coaching legends. He was a student manager for Bob Knight at Indiana University and served as an assistant coach under both Gene Bartow at the University of Alabama at Birmingham and most recently, Homer Drew at Valparaiso University. Bowen's trio of mentors have combined for nearly 2,100 career wins and 105 years of head coaching experience.

Although the BSU head coaching assignment is the first of its kind for Bowen, he welcomes the opportunity to take the reigns and guide a program for himself.

During his four years under Drew at Valpo, Bowen helped to lead the Crusaders to an overall record of 70-52 (.574) with a 41-21 (.661) mark versus Mid-Continent Conference competition. In 2003, his first season at the university, the team was 20-11 overall and 12-2 in the league as it grabbed the front end of back-to-back conference titles. The Valpo men capped the year off with a trip to the National Invitational Tournament (NIT). The following season, the Crusaders went 18-13 overall with an 11-5 mark versus the league to earn their second league crown and a berth into the NCAA Tournament.

In addition to game day and practice duties, Bowen was responsible for organizing all recruiting efforts, summer youth camps, game preparation and scouting and being the team's academic coordinator.

As a recruiter, Bowen was responsible for signing the No. 1 incoming class in the Mid-Continent Conference and one of the Top-100 nationally according to last spring's HoopScoop and Dave Telep recruiting publications. Bowen's ties to the Midwest, specifically Minnesota, were evident in the class as it was headlined by Mr. Basketball Minnesota Finalist and Tartan High School graduate Urule Igbavboa.

Bowen began his collegiate coaching ventures in 1995 when he was hired as an assistant coach at Alabama-Birmingham. In seven seasons at UAB, the Blazers captured a Conference USA National Division Championship (1999), went to the NCAA Tournament (1999) and were twice invited to participate in the NIT (1997, 1998).

The River Falls, Wis. native and son of long-time NCAA Division III head men's basketball coach at the University of Wisconsin-River Falls, Bowen has been around basketball all of his life. But he first acquired a taste of his own for collegiate basketball as the student manager for Knight's Indiana Hoosiers (1990-1995). While serving under coach Knight, Bowen was a part of two Big Ten titles (1991, 1993) and four NCAA Tournament appearances, twice advancing to the Elite Eight (1992-1993) and earning a spot in the Final Four in 1992.

He joins a long list of former Indiana managers who have gone on to make a name for themselves in coaching, most notably New Jersey Nets Head Coach Lawrence Frank, a manager at IU from 1989 to 1992. While at Indiana, Bowen also worked directly with George David, now the Director of Scouting for the Detroit Pistons and Ryan Carr, a scout for the Indiana Pacers. In addition, Bowen's father, Rick, got his feet wet as a Hoosier student manager under Branch McCracken in the 1960s.

Bowen is a 1995 graduate of Indiana with a Bachelor of Science degree in Health, Physical Education and Recreation (HPER). He picked up a Master of Arts degree in education during his time at UAB, graduating in 1999.

Bowen and his wife Ashli have a seven-year-old daughter McKenzie and a two-year-old daughter Addison.

### THE BOWEN FILE

YEAR	SCHOOL	ASSIGNMENT	RECORDS/NOTABLE TEAM ACHIEVEMENTS
1990-91	INDIANA	STUDENT MANAGER	BIG TEN CHAMPION, NCAA TOURNAMENT
1991-92	INDIANA	STUDENT MANAGER	NCAA TOURNAMENT, FINAL FOUR
1992-93	INDIANA	STUDENT MANAGER	BIG TEN CHAMPION, NCAA TOURNAMENT, ELITE EIGHT
1993-94	INDIANA	STUDENT MANAGER	NCAA TOURNAMENT
1994-95	INDIANA	STUDENT MANAGER	
1995-96	ALABAMA-BIRMINGHAM	ASSISTANT COACH	
1996-97	ALABAMA BIRMINGHAM	ASSISTANT COACH	NIT PARTICIPANT
1997-98	ALABAMA-BIRMINGHAM	ASSISTANT COACH	NIT PARTICIPANT
1998-99	ALABAMA-BIRMINGHAM	ASSISTANT COACH	NCAA TOURNAMENT, CONFERENCE USA DIVISION CHAMPS
1999-00	ALABAMA-BIRMINGHAM	ASSISTANT COACH	
2000-01	ALABAMA-BIRMINGHAM	ASSISTANT COACH	
2001-02	ALABAMA-BIRMINGHAM	ASSISTANT COACH	
2002-03	VALPARAISO	ASSISTANT COACH	NIT PARTICIPANT, MID-CONTINENT CONFERENCE CHAMPS
2003-04	VALPARAISO	ASSISTANT COACH	NCAA TOURNAMENT, MID-CONTINENT CONFERENCE CHAMPS
2004-05	VALPARAISO	ASSISTANT COACH	
2005-06	VALPARAISO	ASSISTANT COACH	
2006-07	BEMIDJI STATE	HEAD COACH	5-23/5-13 NSIC, NSIC TOURNAMENT
2007-08	BEMIDJI STATE	HEAD COACH	6-21/3-15 NSIC
2008-09	BEMIDJI STATE	HEAD COACH	8-19/6-14 NSIC
2009-10	BEMIDJI STATE	HEAD COACH	11-14/7-11 NSIC



### BOWEN'S BSU TEAM VERSUS...

Alaska-Anchorage	0-2
Augustana (S.D.)	0-3
College of the Ozarks	1-0
Concordia University, St. Paul	1-7
Dickinson State	2-0
Finlandia University	1-0
Jamestown	1-1
Mary (N.D.)	1-5
Minnesota, Crookston	7-1
Minnesota Duluth	1-4
MSU Moorhead	2-6
Minnesota State	0-3
Nebraska-Omaha	0-1
North Dakota	0-4
Northern State	1-6
Northland College (Wis.)	1-0
Puget Sound	0-1
Purdue North Central	1-0
SW Minnesota State	0-7
St. Cloud State	1-5
UW-River Falls	0-1
Upper Iowa	3-3
Viterbo University	1-0
Wayne State (Neb.)	2-5
Winona State	2-6
Wisconsin-Parkside	0-1
Wisconsin-Stout	0-1
Wisconsin-Superior	1-1

### BOWEN'S EXHIBITION RECORD...

Indiana	0-1
Minnesota	0-1
North Dakota	0-1
North Dakota State	0-1
Northern Iowa	0-1
Wisconsin	0-1
UW-River Falls	1-0

### BOWEN'S MILESTONES AT BSU...

First game: Minnesota Duluth (11/15/06)  
 First Win: at Minnesota, Crookston (1/6/07)  
 First NSIC Win: at Minnesota, Crookston (1/6/07)  
 First overtime win: vs. Minnesota, Crookston (1/5/08)  
 First 100-point game: at No. 11 Northern State W, 100-93 2OT (Jan. 16)

# 2009-10 NUMERICAL AND ALPHABETICAL ROSTERS

## NUMERICAL

No.	Name	Pos.	Ht.	Wt.	Yr.	Hometown (Last School)
2	Seth Haake	G	6-3	176	Sr.	Eden Prairie, Minn. (Eden Prairie HS)
3	Lance Rongstad	G	6-3	200	Fr.	Eleva, Wis. (Eleva-Strum HS)
4	Brady Fairbanks	G/F	6-5	189	Jr.	Bena, Minn. (Cass Lake-Bena HS)
11	Jake Lindstrom	G	6-0	175	So.	Cottage Grove, Minn. (Park HS)
12	Jon Krebs	G	6-5	184	Fr.	Mahtomedi, Minn. (Mahtomedi HS)
13	Patrick Cassidy	F	6-6	209	Jr.	St. Paul, Minn. (St. Bernard's HS)
15	Burke Lendl	F	6-7	188	Fr.	St. Michael, Minn. (Rogers HS)
25	Noah Shepherd	G	6-2	167	Fr.	Minneapolis, Minn. (Washburn HS)
32	Bryce Tesdahl	G/F	6-3	195	So.	Crosby, Minn. (Crosby-Ironton HS)
34	Mason Walters	G/F	6-7	200	Fr.	Milton, Wis. (Milton HS)
41	Sergej Baskow	F/C	6-8	209	R-Jr.	Ludwigsburg, Germany
50	David Berthene	F	6-9	185	Fr.	Lakeville, Minn. (Lakeville North HS)

## ALPHABETICAL

No.	Name	Pos.	Ht.	Wt.	Yr.	Hometown (Last School)
41	Sergej Baskow	F/C	6-8	209	R-Jr.	Ludwigsburg, Germany
50	David Berthene	F	6-9	185	Fr.	Lakeville, Minn. (Lakeville North HS)
13	Patrick Cassidy	F	6-6	209	Jr.	St. Paul, Minn. (St. Bernard's HS)
4	Brady Fairbanks	G/F	6-5	189	Jr.	Bena, Minn. (Cass Lake-Bena HS)
2	Seth Haake	G	6-3	176	Sr.	Eden Prairie, Minn. (Eden Prairie HS)
12	Jon Krebs	G	6-5	184	Fr.	Mahtomedi, Minn. (Mahtomedi HS)
15	Burke Lendl	F	6-7	188	Fr.	St. Michael, Minn. (Rogers HS)
11	Jake Lindstrom	G	6-0	175	So.	Cottage Grove, Minn. (Park HS)
3	Lance Rongstad	G	6-3	200	Fr.	Eleva, Wis. (Eleva-Strum HS)
25	Noah Shepherd	G	6-2	167	Fr.	Minneapolis, Minn. (Wash)
32	Bryce Tesdahl	G/F	6-3	195	So.	Crosby, Minn. (Crosby-Ironton HS)
34	Mason Walters	G/F	6-7	200	Fr.	Milton, Wis. (Milton HS)

## COACHING STAFF

**Head Coach:** Matt Bowen (Indiana '95), fourth season

**Assistant Coach:** Jeremy Tiers (Lakehead University '98), fourth season

**Graduate Assistant Coach:** Ryan Montgomery (Hamline University '06), second season

**Athletic Trainer:** Travis Shock, second season

**Support Staff:** Reid Nichols, third season

Michael Gelle, third season

Trent Fisher, second season

Dax Larson, Athletic Media Relations

## PONUNCIATION GUIDE

SERGEJ BASKOW	SURGE-a BAS-cow
Seth HAAKE	HAY-key
David BERTHENE	Birth-EEen

## By Class

SENIORS (1)

Haake

JUNIORS (4)

Baskow, Cassidy, Fairbanks, Wruck

SOPHOMORES (2)

Lindstrom, Tesdahl

FRESHMEN (6)

Berthene, Krebs, Lendl, Rongstad, Shepherd, Walters

## By State/Country

GERMANY (1)

Baskow (Ludwigsburg)

UNITED STATES (13)

MINNESOTA (11)

Berthene (Lakeville)

Cassidy (St. Paul)

Fairbanks (Bena)

Haake (Eden Prairie)

Krebs (Mahtomedi)

Lendl (St. Michael)

Lindstrom (Cottage Grove)

Shepherd (Minneapolis)

Tesdahl (Crosby)

Wruck (St. Cloud)

WISCONSIN (2)

Rongstad (Eleva)

Walters (Milton)

## By Height

David Berthene 6-9

Sergej Baskow 6-8

Burke Lendl 6-7

Mason Walters 6-7

Patrick Cassidy 6-6

Brady Fairbanks 6-5

Jon Krebs 6-5

Tyler Wruck 6-4

Seth Haake 6-3

Lance Rongstad 6-3

Bryce Tesdahl 6-3

Noah Shepherd 6-2

Jake Lindstrom 6-0

## By Position

GUARDS (5)

Haake, Krebs, Lindstrom,

Rongstad, Shepherd

GUARD/FORWARDS (4)

Fairbanks, Tesdahl, Walters,

Wruck

FORWARDS (3)

Berthene, Cassidy, Lendl

FORWARD/CENTERS (1)

Baskow

**Bemidji State University**  
**Bemidji State Combined Team Statistics (as of Feb 26, 2010)**  
**All games**

<b>RECORD:</b>	<b>OVERALL</b>	<b>HOME</b>	<b>AWAY</b>	<b>NEUTRAL</b>
<b>ALL GAMES.....</b>	<b>(12-14)</b>	<b>(5-7)</b>	<b>(6-7)</b>	<b>(1-0)</b>
<b>CONFERENCE.....</b>	<b>(8-11)</b>	<b>(4-6)</b>	<b>(4-5)</b>	<b>(0-0)</b>
<b>NON-CONFERENCE.....</b>	<b>(4-3)</b>	<b>(1-1)</b>	<b>(2-2)</b>	<b>(1-0)</b>

## Player	GP-GS	---TOTAL---		---3-PTS---		----REBOUNDS----				PF FO		A TO		Blk	Stl	Pts	Avg			
		Min--Avg	FG-FGA	Pct	3FG-FGA	Pct	FT-FTA	Pct	Off	Def	Tot	Avg	A					TO		
02 Haake, Seth.....	26-26	810 31.2	177-310	.571	60-121	.496	78-97	.804	33	81	114	4.4	83	5	55	60	11	49	492	18.9
03 Rongstad, Lance....	23-17	582 25.3	104-201	.517	17-46	.370	70-89	.787	33	74	107	4.7	63	1	32	49	9	23	295	12.8
04 Fairbanks, Brady...	5-5	143 28.6	20-42	.476	2-16	.125	13-19	.684	4	17	21	4.2	5	0	10	15	2	4	55	11.0
32 Tesdahl, Bryce.....	26-26	867 33.3	78-160	.488	16-43	.372	103-119	.866	8	124	132	5.1	60	0	134	63	2	23	275	10.6
13 Cassidy, Patrick...	25-25	660 26.4	85-164	.518	5-25	.200	39-55	.709	26	69	95	3.8	53	3	35	40	9	13	214	8.6
11 Lindstrom, Jake....	20-7	487 24.4	45-122	.369	18-61	.295	36-41	.878	6	34	40	2.0	46	2	35	18	1	19	144	7.2
01 Johnson, Jimmy.....	5-5	98 19.6	14-22	.636	0-0	.000	7-16	.438	4	14	18	3.6	15	0	7	12	5	3	35	7.0
34 Walters, Mason.....	23-8	352 15.3	42-111	.378	11-32	.344	48-64	.750	16	41	57	2.5	49	1	19	19	2	5	143	6.2
24 Wruck, Tyler.....	5-0	83 16.6	8-16	.500	3-6	.500	8-11	.727	4	9	13	2.6	12	1	2	7	1	5	27	5.4
50 Berthene, David....	26-3	384 14.8	45-105	.429	15-48	.313	14-16	.875	13	18	31	1.2	26	0	14	13	6	3	119	4.6
15 Lendl, Burke.....	23-8	423 18.4	29-67	.433	9-19	.474	20-29	.690	14	59	73	3.2	40	1	18	17	6	9	87	3.8
25 Shepherd, Noah.....	22-0	199 9.0	23-44	.523	7-19	.368	10-22	.455	8	16	24	1.1	18	0	18	18	1	7	63	2.9
41 Baskow, Sergej....	5-0	60 12.0	3-12	.250	0-1	.000	5-8	.625	6	8	14	2.8	14	1	2	8	1	3	11	2.2
12 Krebs, Jon.....	14-0	77 5.5	5-19	.263	0-5	.000	7-10	.700	4	16	20	1.4	10	0	4	10	1	3	17	1.2
TEAM.....									44	48	92	3.5	0		4					
-----																				
Total.....	26	5225	678-1395	.486	163-442	.369	458-596	.768	223	628	851	32.7	494	15	385	353	57	169	1977	76.0
Opponents.....	26	5225	704-1529	.460	223-581	.384	373-525	.710	281	570	851	32.7	490	8	379	334	68	185	2004	77.1

TEAM STATISTICS	BSUMBB	OPP	DATE	OPPONENT	W/L	SCORE	ATTEND
SCORING.....	1977	2004	11/20/09	vs College of the Ozarks, MO	W	60-54	147
Points per game.....	76.0	77.1	11/21/09	at Viterbo University, Wis.	W	69-44	225
Scoring margin.....	-1.0	-	11/24/09	JAMESTOWN	L	69-72	798
FIELD GOALS-ATT.....	678-1395	704-1529	11-27-09	at Purdue North Central	W	88-60	145
Field goal pct.....	.486	.460	11-28-09	at Wisconsin-Parkside	L	65-78	518
3 POINT FG-ATT.....	163-442	223-581	*12/04/09	MSUMMBB	L	71-73	1021
3-point FG pct.....	.369	.384	*12/05/09	UMCMBB	W	89-72	855
3-pt FG made per game..	6.3	8.6	*12/12/09	at Winona State	W OT	88-87	1186
FREE THROWS-ATT.....	458-596	373-525	*12/13/09	at Upper Iowa	L	80-91	367
Free throw pct.....	.768	.710	12/29/09	at Northern Michigan	L	75-84	390
REBOUNDS.....	851	851	*01/02/10	AUGIEMBB	L	73-80	826
Rebounds per game.....	32.7	32.7	*01/03/10	WSCMBB	L	66-78	761
Rebounding margin.....	+0.0	-	*01/08/10	at Concordia University, St. Paul	L	76-110	600
ASSISTS.....	385	379	*01/09/10	at St. Cloud State University	L	69-80	3591
Assists per game.....	14.8	14.6	*01/15/10	NSU	L	65-67	732
TURNOVERS.....	353	334	*01/16/10	MARYMEN	W	81-59	927
Turnovers per game.....	13.6	12.8	*1/23/10	UMD-MBB	W	71-69	601
Turnover margin.....	-0.7	-	*1/29/10	at Minnesota State	L	66-108	1823
Assist/turnover ratio..	1.1	1.1	*8/30/10	at Southwest Minnesota State	L	67-71	2746
STEALS.....	169	185	*2/5/2010	CONCORDIA UNIVERSITY, ST. PAUL	L	73-78	929
Steals per game.....	6.5	7.1	*2/6/2010	ST. CLOUD STATE UNIVERSITY	L	71-107	802
BLOCKS.....	57	68	*2/12/10	at MSUMMBB	W	79-75	-
Blocks per game.....	2.2	2.6	*02/13/10	at UMCMBB	W	81-64	153
WINNING STREAK.....	5	-	2/16/10	FUMBB2	W	99-67	602
Home win streak.....	2	-	*2/20/10	WINONA STATE	W	88-86	855
ATTENDANCE.....	9709	12354	*02/24/10	at Minnesota Duluth	W	98-90	463
Home games-Avg/Game....	12-809	13-939					
Neutral site-Avg/Game..	-	1-147					

SCORE BY PERIODS:	1st	2nd	OT	Total
Bemidji State.....	942	1021	14	- 1977
Opponents.....	889	1102	13	- 2004

**Bemidji State University**  
**Bemidji State Overall/Conference Statistics (as of Feb 26, 2010)**  
**All games**

SUMMARY	OVERALL STATISTICS										CONFERENCE STATISTICS									
	GP-GS	Min/G	FG%	3PT%	FT%	R/G	A/G	STL	BLK	PTS/G	GP-GS	Min/G	FG%	3PT%	FT%	R/G	A/G	STL	BLK	PTS/G
Haake, Seth.....	26-26	31.2	.571	.496	.804	4.4	2.1	49	11	18.9	19-19	33.6	.559	.511	.787	4.4	2.3	35	11	20.1
Rongstad, Lance.....	23-17	25.3	.517	.370	.787	4.7	1.4	23	9	12.8	17-15	29.4	.552	.421	.772	5.1	1.6	18	9	15.2
Fairbanks, Brady....	5-5	28.6	.476	.125	.684	4.2	2.0	4	2	11.0										
Tesdahl, Bryce.....	26-26	33.3	.488	.372	.866	5.1	5.2	23	2	10.6	19-19	34.2	.496	.393	.862	5.6	5.3	16	2	11.7
Cassidy, Patrick.....	25-25	26.4	.518	.200	.709	3.8	1.4	13	9	8.6	19-19	26.7	.508	.158	.723	3.8	1.5	10	8	8.6
Lindstrom, Jake.....	20-7	24.4	.369	.295	.878	2.0	1.8	19	1	7.2	14-6	25.9	.381	.324	.886	2.1	2.1	13	1	7.6
Johnson, Jimmy.....	5-5	19.6	.636	.000	.438	3.6	1.4	3	5	7.0										
Walters, Mason.....	23-8	15.3	.378	.344	.750	2.5	0.8	5	2	6.2	19-8	15.9	.375	.357	.696	2.6	0.8	5	2	6.0
Wruck, Tyler.....	5-0	16.6	.500	.500	.727	2.6	0.4	5	1	5.4										
Berthene, David.....	26-3	14.8	.429	.313	.875	1.2	0.5	3	6	4.6	19-2	15.8	.398	.308	1.000	1.2	0.5	2	3	4.7
Lendl, Burke.....	23-8	18.4	.433	.474	.690	3.2	0.8	9	6	3.8	19-7	19.2	.393	.357	.652	3.4	0.8	9	4	3.4
Shepherd, Noah.....	22-0	9.0	.523	.368	.455	1.1	0.8	7	1	2.9	17-0	9.1	.444	.200	.375	1.1	0.8	5	1	2.4
Baskow, Sergej.....	5-0	12.0	.250	.000	.625	2.8	0.4	3	1	2.2										
Krebs, Jon.....	14-0	5.5	.263	.000	.700	1.4	0.3	3	1	1.2	10-0	4.3	.231	.000	.833	1.3	0.2	1	0	1.1
Total.....	26		.486	.369	.768	32.7	14.8	169	57	76.0	19		.482	.380	.776	31.9	14.9	114	41	76.4
Opponents.....	26		.460	.384	.710	32.7	14.6	185	68	77.1	19		.480	.404	.710	33.6	16.1	134	53	81.3

SCORING	OVERALL STATISTICS										CONFERENCE STATISTICS									
	FG-FGA	FG%	3FG-FGA	3PT%	FT-FTA	FT%	PTS	PTS/G	FG-FGA	FG%	3FG-FGA	3PT%	FT-FTA	FT%	PTS	PTS/G				
Haake, Seth.....	177-310	.571	60-121	.496	78-97	.804	492	18.9	137-245	.559	48-94	.511	59-75	.787	381	20.1				
Rongstad, Lance.....	104-201	.517	17-46	.370	70-89	.787	295	12.8	91-165	.552	16-38	.421	61-79	.772	259	15.2				
Fairbanks, Brady....	20-42	.476	2-16	.125	13-19	.684	55	11.0												
Tesdahl, Bryce.....	78-160	.488	16-43	.372	103-119	.866	275	10.6	65-131	.496	11-28	.393	81-94	.862	222	11.7				
Cassidy, Patrick.....	85-164	.518	5-25	.200	39-55	.709	214	8.6	63-124	.508	3-19	.158	34-47	.723	163	8.6				
Lindstrom, Jake.....	45-122	.369	18-61	.295	36-41	.878	144	7.2	32-84	.381	12-37	.324	31-35	.886	107	7.6				
Johnson, Jimmy.....	14-22	.636	0-0	.000	7-16	.438	35	7.0												
Walters, Mason.....	42-111	.378	11-32	.344	48-64	.750	143	6.2	36-96	.375	10-28	.357	32-46	.696	114	6.0				
Wruck, Tyler.....	8-16	.500	3-6	.500	8-11	.727	27	5.4												
Berthene, David.....	45-105	.429	15-48	.313	14-16	.875	119	4.6	33-83	.398	12-39	.308	12-12	1.000	90	4.7				
Lendl, Burke.....	29-67	.433	9-19	.474	20-29	.690	87	3.8	22-56	.393	5-14	.357	15-23	.652	64	3.4				
Shepherd, Noah.....	23-44	.523	7-19	.368	10-22	.455	63	2.9	16-36	.444	3-15	.200	6-16	.375	41	2.4				
Baskow, Sergej.....	3-12	.250	0-1	.000	5-8	.625	11	2.2												
Krebs, Jon.....	5-19	.263	0-5	.000	7-10	.700	17	1.2	3-13	.231	0-4	.000	5-6	.833	11	1.1				
Total.....	678-1395	.486	163-442	.369	458-596	.768	1977	76.0	498-1033	.482	120-316	.380	336-433	.776	1452	76.4				
Opponents.....	704-1529	.460	223-581	.384	373-525	.710	2004	77.1	548-1142	.480	184-455	.404	265-373	.710	1545	81.3				

TOTALS	OVERALL STATISTICS										CONFERENCE STATISTICS									
	O-REB	D-REB	TOTAL	PF	FO	A	TO	A/TO	Hi	Pts	O-REB	D-REB	TOTAL	PF	FO	A	TO	A/TO	Hi	Pts
Haake, Seth.....	33	81	114	83	5	55	60	0.9	36		24	60	84	59	3	43	47	0.9	36	
Rongstad, Lance.....	33	74	107	63	1	32	49	0.7	29		27	59	86	49	0	27	45	0.6	29	
Fairbanks, Brady....	4	17	21	5	0	10	15	0.7	18											
Tesdahl, Bryce.....	8	124	132	60	0	134	63	2.1	22		7	99	106	46	0	100	47	2.1	22	
Cassidy, Patrick.....	26	69	95	53	3	35	40	0.9	20		20	53	73	44	3	29	31	0.9	20	
Lindstrom, Jake.....	6	34	40	46	2	35	18	1.9	14		4	25	29	31	0	30	12	2.5	14	
Johnson, Jimmy.....	4	14	18	15	0	7	12	0.6	17											
Walters, Mason.....	16	41	57	49	1	19	19	1.0	14		16	34	50	43	1	15	14	1.1	12	
Wruck, Tyler.....	4	9	13	12	1	2	7	0.3	8											
Berthene, David.....	13	18	31	26	0	14	13	1.1	17		10	12	22	20	0	9	8	1.1	17	
Lendl, Burke.....	14	59	73	40	1	18	17	1.1	17		13	51	64	35	1	15	13	1.2	8	
Shepherd, Noah.....	8	16	24	18	0	18	18	1.0	12		8	10	18	13	0	14	9	1.6	11	
Baskow, Sergej.....	6	8	14	14	1	2	8	0.3	4											
Krebs, Jon.....	4	16	20	10	0	4	10	0.4	6		4	9	13	5	0	2	5	0.4	6	
Total.....	223	628	851	494	15	385	353	1.1	99		168	439	607	345	8	284	234	1.2	98	
Opponents.....	281	570	851	490	8	379	334	1.1	110		217	421	638	359	7	306	221	1.4	110	

Bemidji State University  
 Bemidji State Category Leaders (as of Feb 26, 2010)  
 All games

FG PERCENTAGE	FG ATT	Pct
Johnson, Jimmy.....	14 22	.636
Haake, Seth.....	177 310	.571
Shepherd, Noah.....	23 44	.523
Cassidy, Patrick....	85 164	.518
Rongstad, Lance.....	104 201	.517
Wruck, Tyler.....	8 16	.500
Tesdahl, Bryce.....	78 160	.488
Fairbanks, Brady....	20 42	.476
Lendl, Burke.....	29 67	.433
Berthene, David.....	45 105	.429
Walters, Mason.....	42 111	.378
Lindstrom, Jake.....	45 122	.369

3-POINT PERCENTAGE	3FG ATT	Pct
Wruck, Tyler.....	3 6	.500
Haake, Seth.....	60 121	.496
Lendl, Burke.....	9 19	.474
Tesdahl, Bryce.....	16 43	.372
Rongstad, Lance.....	17 46	.370
Shepherd, Noah.....	7 19	.368
Walters, Mason.....	11 32	.344
Berthene, David.....	15 48	.313
Lindstrom, Jake.....	18 61	.295
Cassidy, Patrick....	5 25	.200
Fairbanks, Brady....	2 16	.125
Krebs, Jon.....	0 5	.000
Baskow, Sergej.....	0 1	.000

FT PERCENTAGE	FT ATT	Pct
Lindstrom, Jake.....	36 41	.878
Berthene, David.....	14 16	.875
Tesdahl, Bryce.....	103 119	.866
Haake, Seth.....	78 97	.804
Rongstad, Lance.....	70 89	.787
Walters, Mason.....	48 64	.750
Wruck, Tyler.....	8 11	.727
Cassidy, Patrick....	39 55	.709
Krebs, Jon.....	7 10	.700
Lendl, Burke.....	20 29	.690
Fairbanks, Brady....	13 19	.684
Baskow, Sergej.....	5 8	.625

POINTS	G	Pts	Pts/G
Haake, Seth.....	26	492	18.9
Rongstad, Lance.....	23	295	12.8
Tesdahl, Bryce.....	26	275	10.6
Cassidy, Patrick....	25	214	8.6
Lindstrom, Jake.....	20	144	7.2
Walters, Mason.....	23	143	6.2
Berthene, David.....	26	119	4.6
Lendl, Burke.....	23	87	3.8
Shepherd, Noah.....	22	63	2.9
Fairbanks, Brady....	5	55	11.0
Johnson, Jimmy.....	5	35	7.0
Wruck, Tyler.....	5	27	5.4

FIELD GOAL ATTEMPTS	G	Att	Att/G
Haake, Seth.....	26	310	11.9
Rongstad, Lance.....	23	201	8.7
Cassidy, Patrick....	25	164	6.6
Tesdahl, Bryce.....	26	160	6.2
Lindstrom, Jake.....	20	122	6.1

FIELD GOALS MADE	G	Made	Made/G
Haake, Seth.....	26	177	6.8
Rongstad, Lance.....	23	104	4.5
Cassidy, Patrick....	25	85	3.4
Tesdahl, Bryce.....	26	78	3.0
Berthene, David.....	26	45	1.7
Lindstrom, Jake.....	20	45	2.3

3-POINT FG ATTEMPTS	G	Att	Att/G
Haake, Seth.....	26	121	4.7
Lindstrom, Jake.....	20	61	3.1
Berthene, David.....	26	48	1.8
Rongstad, Lance.....	23	46	2.0
Tesdahl, Bryce.....	26	43	1.7

3-POINT FGS MADE	G	Made	Made/G
Haake, Seth.....	26	60	2.3
Lindstrom, Jake.....	20	18	0.9
Rongstad, Lance.....	23	17	0.7
Tesdahl, Bryce.....	26	16	0.6
Berthene, David.....	26	15	0.6

FREE THROW ATTEMPTS	G	Att	Att/G
Tesdahl, Bryce.....	26	119	4.6
Haake, Seth.....	26	97	3.7
Rongstad, Lance.....	23	89	3.9
Walters, Mason.....	23	64	2.8
Cassidy, Patrick....	25	55	2.2

FREE THROWS MADE	G	Made	Made/G
Tesdahl, Bryce.....	26	103	4.0
Haake, Seth.....	26	78	3.0
Rongstad, Lance.....	23	70	3.0
Walters, Mason.....	23	48	2.1
Cassidy, Patrick....	25	39	1.6

SCORING AVERAGE	G	Pts	Avg/G
Haake, Seth.....	26	492	18.9
Rongstad, Lance.....	23	295	12.8
Fairbanks, Brady....	5	55	11.0
Tesdahl, Bryce.....	26	275	10.6
Cassidy, Patrick....	25	214	8.6
Lindstrom, Jake.....	20	144	7.2
Johnson, Jimmy.....	5	35	7.0
Walters, Mason.....	23	143	6.2
Wruck, Tyler.....	5	27	5.4
Berthene, David.....	26	119	4.6
Lendl, Burke.....	23	87	3.8
Shepherd, Noah.....	22	63	2.9

**Bemidji State University**  
**Bemidji State Game-by-Game Highs (as of Feb 26, 2010)**  
**All games**

Opponent	Date	Score	WL	POINTS	REBOUNDS	ASSISTS	STEALS	BLOCKED SHOTS
vs College of the Ozarks,	11/20/09	60-54	W	14-Fairbanks, Br	4-Cassidy, Patr Wruck, Tyler	5-Tesdahl, Bryc	3-Fairbanks, Br	1-Wruck, Tyler Fairbanks, Br Johnson, Jimm Berthene, Dav
at Viterbo University, Wi	11/21/09	69-44	W	15-Haake, Seth	8-Haake, Seth	8-Tesdahl, Bryc	2-Haake, Seth	3-Johnson, Jimm
JAMESTOWN	11/24/09	69-72	L	18-Fairbanks, Br	6-Fairbanks, Br	4-Fairbanks, Br	3-Haake, Seth	1-Johnson, Jimm
at Purdue North Central	11-27-09	88-60	W	17-Johnson, Jimm	6-Rongstad, Lan	4-Haake, Seth	2-Haake, Seth	None
at Wisconsin-Parkside	11-28-09	65-78	L	17-Haake, Seth	6-Fairbanks, Br	3-Tesdahl, Bryc Haake, Seth	1-Rongstad, Lan Lindstrom, Ja	1-Cassidy, Patr
MSUMMBB	12/04/09	71-73	L	20-Cassidy, Patr	6-Tesdahl, Bryc	7-Tesdahl, Bryc	4-Lindstrom, Ja	2-Cassidy, Patr
UMCMBB	12/05/09	89-72	W	20-Tesdahl, Bryc	6-Lindstrom, Ja Tesdahl, Bryc	7-Haake, Seth	2-Tesdahl, Bryc	2-Haake, Seth
at Winona State	12/12/09	88-87	WO	25-Haake, Seth	9-Tesdahl, Bryc Rongstad, Lan	11-Tesdahl, Bryc	2-Haake, Seth	1-Rongstad, Lan
at Upper Iowa	12/13/09	80-91	L	21-Haake, Seth	5-Tesdahl, Bryc Haake, Seth	6-Tesdahl, Bryc Lindstrom, Ja	3-Lindstrom, Ja	2-Cassidy, Patr
at Northern Michigan	12/29/09	75-84	L	27-Haake, Seth	8-Rongstad, Lan	5-Tesdahl, Bryc	2-Tesdahl, Bryc	1-Berthene, Dav Lendl, Burke
AUGIEMBB	01/02/10	73-80	L	24-Haake, Seth	8-Tesdahl, Bryc	4-Tesdahl, Bryc	2-Lindstrom, Ja	1-Rongstad, Lan
WSCMBB	01/03/10	66-78	L	16-Haake, Seth	6-Rongstad, Lan	8-Tesdahl, Bryc	2-Haake, Seth Tesdahl, Bryc	1-Haake, Seth
at Concordia University,	01/08/10	76-110	L	19-Haake, Seth	8-Krebs, Jon	3-Tesdahl, Bryc	2-Cassidy, Patr	1-Cassidy, Patr Berthene, Dav Haake, Seth Lindstrom, Ja Lendl, Burke
at St. Cloud State Univer	01/09/10	69-80	L	15-Haake, Seth Tesdahl, Bryc	7-Walters, Maso	4-Tesdahl, Bryc	5-Haake, Seth	1-Rongstad, Lan
NSU	01/15/10	65-67	L	18-Haake, Seth	6-Haake, Seth	4-Tesdahl, Bryc	4-Haake, Seth	1-Rongstad, Lan Tesdahl, Bryc
MARYMEN	01/16/10	81-59	W	18-Haake, Seth	10-Tesdahl, Bryc	7-Haake, Seth	3-Rongstad, Lan	1-Rongstad, Lan
UMD-MBB	1/23/10	71-69	W	23-Haake, Seth	8-Tesdahl, Bryc	6-Tesdahl, Bryc	2-Haake, Seth	1-Rongstad, Lan Walters, Maso Berthene, Dav
at Minnesota State	1/29/10	66-108	L	12-Lindstrom, Ja	5-Walters, Maso	3-Shepherd, Noa	2-Haake, Seth	1-Shepherd, Noa Rongstad, Lan
at Southwest Minnesota St	8/30/10	67-71	L	16-Tesdahl, Bryc	6-Tesdahl, Bryc	7-Tesdahl, Bryc	3-Haake, Seth	1-Haake, Seth
CONCORDIA UNIVERSITY, ST.	2/5/2010	73-78	L	26-Haake, Seth	10-Lendl, Burke	8-Tesdahl, Bryc	2-Cassidy, Patr	None
ST. CLOUD STATE UNIVERSIT	2/6/2010	71-107	L	17-Haake, Seth	7-Haake, Seth	3-Walters, Maso Haake, Seth	2-Tesdahl, Bryc	1-Lendl, Burke Cassidy, Patr Haake, Seth
at MSUMMBB	2/12/10	79-75	W	30-Haake, Seth	9-Tesdahl, Bryc	4-Lendl, Burke	2-Lendl, Burke	2-Haake, Seth
at UMCMBB	02/13/10	81-64	W	27-Rongstad, Lan	6-Haake, Seth	4-Tesdahl, Bryc	5-Tesdahl, Bryc	None
FUMBB2	2/16/10	99-67	W	22-Haake, Seth	6-Lendl, Burke	10-Tesdahl, Bryc	5-Haake, Seth	1-Berthene, Dav Krebs, Jon Lendl, Burke
WINONA STATE	2/20/10	88-86	W	29-Rongstad, Lan	9-Cassidy, Patr	8-Tesdahl, Bryc	2-Haake, Seth	2-Rongstad, Lan
at Minnesota Duluth	02/24/10	98-90	W	36-Haake, Seth	11-Rongstad, Lan	8-Tesdahl, Bryc	2-Haake, Seth	2-Haake, Seth

**Bemidji State University**  
**Bemidji State Team Game-by-Game (as of Feb 26, 2010)**  
**All games**

TEAM STATISTICS

Opponent	Date	Score	W/L	---TOTAL---		--3-PTRS--		FT-FTA		Pct		----REBOUNDS----				PF		A		TO		Blk		Stl		Pts---Avg	
				FG-FGA	Pct	3FG-FGA	Pct	Off	Def	Tot	Avg	A	TO	Blk	Stl	Pts	Avg										
vs College of the Oza	11/20/09	60-54	W	16-37	.432	3-15	.200	25-33	.758	7	22	29	29.0	22	8	23	4	9	60	60.0							
at Viterbo University	11/21/09	69-44	W	26-55	.473	8-22	.364	9-14	.643	12	33	45	37.0	14	14	13	5	5	69	64.5							
JAMESTOWN	11/24/09	69-72	L	25-53	.472	4-18	.222	15-19	.789	8	18	26	33.3	16	14	18	1	13	69	66.0							
at Purdue North Centr	11-27-09	88-60	W	32-53	.604	6-14	.429	18-26	.692	6	33	39	34.8	30	19	18	0	9	88	71.5							
at Wisconsin-Parkside	11-28-09	65-78	L	22-54	.407	2-15	.133	19-27	.704	8	26	34	34.6	29	9	16	1	3	65	70.2							
MSUMMBB	12/04/09	71-73	L	28-62	.452	7-24	.292	8-11	.727	9	21	30	33.8	15	16	8	4	9	71	70.3							
UMCMBB	12/05/09	89-72	W	32-58	.552	7-16	.438	18-21	.857	8	27	35	34.0	19	20	11	3	6	89	73.0							
at Winona State	12/12/09	88-87	Wot	31-62	.500	13-29	.448	13-17	.765	13	25	38	34.5	22	22	11	1	5	88	74.9							
at Upper Iowa	12/13/09	80-91	L	28-52	.538	8-16	.500	16-18	.889	2	17	19	32.8	18	19	11	4	6	80	75.4							
at Northern Michigan	12/29/09	75-84	L	26-58	.448	13-30	.433	10-12	.833	5	24	29	32.4	23	15	15	2	4	75	75.4							
AUGIEMBB	01/02/10	73-80	L	23-48	.479	7-17	.412	20-28	.714	7	26	33	32.5	18	13	12	1	3	73	75.2							
WSCMBB	01/03/10	66-78	L	23-53	.434	5-16	.313	15-19	.789	7	16	23	31.7	22	11	7	1	5	66	74.4							
at Concordia Universi	01/08/10	76-110	L	26-66	.394	7-23	.304	17-20	.850	17	25	42	32.5	16	14	20	5	6	76	74.5							
at St. Cloud State Un	01/09/10	69-80	L	24-48	.500	3-10	.300	18-22	.818	11	24	35	32.6	22	14	18	1	5	69	74.1							
NSU	01/15/10	65-67	L	23-57	.404	5-17	.294	14-19	.737	12	19	31	32.5	18	14	7	2	8	65	73.5							
MARYMEN	01/16/10	81-59	W	29-49	.592	6-16	.375	17-21	.810	7	29	36	32.8	15	20	14	1	6	81	74.0							
UMD-MBB	1/23/10	71-69	W	24-51	.471	8-15	.533	15-21	.714	8	28	36	32.9	12	12	7	3	3	71	73.8							
at Minnesota State	1/29/10	66-108	L	26-61	.426	2-15	.133	12-17	.706	10	20	30	32.8	19	14	19	1	7	66	73.4							
at Southwest Minnesot	8/30/10	67-71	L	25-52	.481	4-16	.250	13-18	.722	3	20	23	32.3	20	18	5	1	6	67	73.1							
CONCORDIA UNIVERSITY,	2/5/2010	73-78	L	26-53	.491	9-15	.600	12-17	.706	7	17	24	31.9	16	15	11	0	5	73	73.1							
ST. CLOUD STATE UNIVE	2/6/2010	71-107	L	22-52	.423	5-14	.357	22-28	.786	9	19	28	31.7	23	14	19	3	5	71	73.0							
at MSUMMBB	2/12/10	79-75	W	27-56	.482	7-16	.438	18-26	.692	13	27	40	32.0	15	8	15	2	5	79	73.2							
at UMCMBB	02/13/10	81-64	W	23-45	.511	6-16	.375	29-34	.853	4	22	26	31.8	19	11	12	0	13	81	73.6							
FUMBB2	2/16/10	99-67	W	33-52	.635	7-12	.583	26-32	.813	9	33	42	32.2	15	22	16	3	12	99	74.6							
WINONA STATE	2/20/10	88-86	W	25-51	.490	5-13	.385	33-38	.868	11	22	33	32.2	19	15	13	3	5	88	75.2							
at Minnesota Duluth	02/24/10	98-90	W	33-57	.579	6-12	.500	26-38	.684	10	35	45	32.7	17	14	14	5	6	98	76.0							
Bemidji State				1977	678-1395	.486	163-442	.369	458-596	.768	223	628	851	32.7	494	385	353	57	169	1977	76.0						
Opponents				2004	704-1529	.460	223-581	.384	373-525	.710	281	570	851	32.7	490	379	334	68	185	2004	77.1						

Games played: 26  
Points/game: 76.0  
FG Pct: 48.6  
3FG Pct: 36.9  
FT Pct: 76.8

Rebounds/game: 32.7  
Assists/game: 14.8  
Turnovers/game: 13.6  
Assist/turnover ratio: 1.1  
Steals/game: 6.5  
Blocks/game: 2.2

**Bemidji State University**  
**Bemidji State Game-by-Game Points-Rebounds-Assists (as of Feb 26, 2010)**  
**All games**

Opponent	Date	Score	02		03		11		12		13		15		25		32		34	
			WL	HAAKE,SET	RONGSTAD,	LINDSTROM	KREBS, JON	CASSIDY, P	LENDL, BUR	SHEPHERD,	TESDAHL, B	WALTERS, M								
vs College of the Ozark	11/20/09	60-54	W	7- 2- 0	0- 0- 0	2- 3- 1	DNP	12- 4- 1	DNP	DNP	DNP	12- 3- 5	DNP							
at Viterbo University,	11/21/09	69-44	W	15- 8- 1	4- 3- 0	8- 2- 0	2- 1- 0	7- 7- 0	0- 1- 0	0- 1- 1	8- 4- 8	0- 1- 1								
JAMESTOWN	11/24/09	69-72	L	17- 2- 3	DNP	5- 0- 1	DNP	6- 1- 1	DNP	DNP	9- 3- 2	DNP								
at Purdue North Central	11-27-09	88-60	W	6- 3- 4	5- 6- 1	7- 3- 2	0- 1- 0	9- 4- 0	3- 0- 0	7- 0- 1	4- 1- 1	14- 4- 1								
at Wisconsin-Parkside	11-28-09	65-78	L	17- 5- 3	2- 0- 0	2- 1- 0	DNP	13- 4- 0	DNP	0- 0- 0	5- 4- 3	DNP								
MSUMMBB	12/04/09	71-73	L	16- 3- 3	8- 4- 0	6- 3- 0	0- 0- 0	20- 3- 2	5- 3- 0	0- 0- 1	12- 6- 7	0- 1- 0								
UMCMBB	12/05/09	89-72	W	18- 5- 7	13- 4- 3	10- 6- 4	0- 0- 0	5- 2- 1	0- 3- 0	4- 3- 1	20- 6- 3	2- 1- 0								
at Winona State	12/12/09	88-87	WO	25- 7- 1	19- 9- 5	8- 1- 2	DNP	8- 3- 1	0- 1- 0	2- 0- 0	20- 9-11	0- 0- 0								
at Upper Iowa	12/13/09	80-91	L	21- 5- 2	13- 1- 0	14- 3- 6	DNP	8- 2- 3	5- 0- 0	3- 2- 2	8- 5- 6	0- 0- 0								
at Northern Michigan	12/29/09	75-84	L	27- 5- 0	13- 8- 3	13- 2- 1	0- 0- 0	4- 2- 4	3- 2- 0	3- 1- 1	11- 7- 5	1- 0- 1								
AUGIEMBB	01/02/10	73-80	L	24- 3- 2	16- 6- 2	5- 2- 3	DNP	8- 5- 1	3- 1- 1	0- 1- 0	7- 8- 4	0- 1- 0								
WSCMBB	01/03/10	66-78	L	16- 2- 2	15- 6- 1	2- 4- 0	DNP	11- 4- 0	0- 1- 0	0- 0- 0	9- 1- 8	11- 1- 0								
at Concordia University	01/08/10	76-110	L	19- 7- 2	4- 2- 2	12- 2- 2	2- 8- 1	7- 5- 2	2- 1- 0	11- 2- 2	6- 6- 3	9- 6- 0								
at St. Cloud State Univ	01/09/10	69-80	L	15- 6- 2	12- 5- 3	DNP	0- 0- 0	14- 4- 2	1- 3- 1	2- 1- 2	15- 6- 4	10- 7- 0								
NSU	01/15/10	65-67	L	18- 6- 3	13- 3- 3	9- 2- 2	DNP	2- 4- 2	2- 2- 0	2- 1- 0	11- 5- 4	5- 2- 0								
MARYMEN	01/16/10	81-59	W	18- 2- 7	17- 7- 2	5- 2- 3	0- 1- 0	8- 2- 2	4- 3- 0	0- 0- 0	8-10- 5	9- 6- 0								
UMD-MBB	1/23/10	71-69	W	23- 5- 2	15- 3- 0	5- 1- 0	DNP	4- 6- 1	2- 4- 2	3- 1- 1	4- 8- 6	12- 3- 0								
at Minnesota State	1/29/10	66-108	L	8- 2- 2	10- 4- 2	12- 1- 2	6- 2- 0	4- 3- 1	6- 2- 0	2- 3- 3	6- 2- 2	8- 5- 2								
at Southwest Minnesota	8/30/10	67-71	L	15- 3- 2	12- 1- 1	0- 2- 2	3- 0- 0	4- 4- 1	5- 1- 0	0- 0- 1	16- 6- 7	12- 3- 4								
CONCORDIA UNIVERSITY, S2/5/2010	73-78	L	26- 4- 1	DNP	10- 0- 2	0- 0- 0	9- 4- 1	6-10- 0	0- 0- 0	10- 3- 8	12- 1- 2									
ST. CLOUD STATE UNIVERS2/6/2010	71-107	L	17- 7- 3	DNP	9- 0- 2	0- 2- 1	13- 1- 0	2- 4- 2	7- 4- 1	10- 1- 1	9- 3- 3									
at MSUMMBB	2/12/10	79-75	W	30- 3- 0	13- 8- 2	DNP	DNP	14- 7- 1	3- 7- 4	DNP	14- 9- 1	1- 3- 0								
at UMCMBB	02/13/10	81-64	W	16- 6- 1	27- 5- 0	DNP	0- 0- 0	2- 1- 2	3- 2- 2	2- 0- 0	22- 5- 4	4- 1- 2								
FUMBB2	2/16/10	99-67	W	22- 5- 1	12- 4- 1	DNP	4- 5- 2	DNP	17- 6- 3	12- 4- 1	4- 4-10	14- 2- 1								
WINONA STATE	2/20/10	88-86	W	20- 3- 1	29- 7- 0	DNP	DNP	9- 9- 4	8- 7- 0	DNP	14- 4- 8	6- 2- 2								
at Minnesota Duluth	02/24/10	98-90	W	36- 5- 0	23-11- 1	DNP	DNP	13- 4- 2	7- 9- 3	3- 0- 0	10- 6- 8	4- 4- 0								

Opponent	Date	Score	50	
			WL	BERTHENE,
vs College of the Ozark	11/20/09	60-54	W	0- 0- 0
at Viterbo University,	11/21/09	69-44	W	2- 0- 0
JAMESTOWN	11/24/09	69-72	L	3- 0- 0
at Purdue North Central	11-27-09	88-60	W	8- 3- 2
at Wisconsin-Parkside	11-28-09	65-78	L	2- 1- 0
MSUMMBB	12/04/09	71-73	L	4- 2- 3
UMCMBB	12/05/09	89-72	W	17- 1- 1
at Winona State	12/12/09	88-87	WO	6- 2- 2
at Upper Iowa	12/13/09	80-91	L	8- 1- 0
at Northern Michigan	12/29/09	75-84	L	0- 0- 0
AUGIEMBB	01/02/10	73-80	L	10- 2- 0
WSCMBB	01/03/10	66-78	L	2- 0- 0
at Concordia University	01/08/10	76-110	L	4- 1- 0
at St. Cloud State Univ	01/09/10	69-80	L	0- 1- 0
NSU	01/15/10	65-67	L	3- 0- 0
MARYMEN	01/16/10	81-59	W	12- 1- 1
UMD-MBB	1/23/10	71-69	W	3- 2- 0
at Minnesota State	1/29/10	66-108	L	4- 2- 0
at Southwest Minnesota	8/30/10	67-71	L	0- 0- 0
CONCORDIA UNIVERSITY, S2/5/2010	73-78	L	0- 0- 1	
ST. CLOUD STATE UNIVERS2/6/2010	71-107	L	4- 3- 1	
at MSUMMBB	2/12/10	79-75	W	4- 0- 0
at UMCMBB	02/13/10	81-64	W	5- 2- 0
FUMBB2	2/16/10	99-67	W	14- 5- 3
WINONA STATE	2/20/10	88-86	W	2- 0- 0
at Minnesota Duluth	02/24/10	98-90	W	2- 2- 0



# Bemidji State University

## Athletic Media Relations

**DATE:** Feb. 24, 2010 // **FOR IMMEDIATE RELEASE**

**CONTACT:** Dax Larson, Assistant Director of Athletic Media Relations (218-755-2763 / dlarson@bemidjistate.edu)

*Men's Basketball*

## **Haake's career-high 36 points guides Beavers to fifth straight win** **Senior Seth Haake moves to 10th on BSU's career points list**

**DULUTH, Minn.** -- Senior **Seth Haake** (G, Eden Prairie, Minn.) established a new career-high for the second time in five games, scoring 36 points in a 98-90 victory at University of Minnesota Duluth to guide the Beavers to their fifth consecutive victory. Haake has 1,193 career points to sit 10th on BSU's career scoring chart.

The Beavers improve to 12-14 overall and 8-11 in Northern Sun Intercollegiate Conference play. The win gives BSU a season-sweep of the Bulldogs for the first time since the 2001-02 season. The five-game winning streak is the longest in head coach **Matt Bowen's** four year career at Bemidji State. Haake shot lights-out, going 12-of-14 from the field (85.7%), 4-for-5 from beyond the arc (80%) and 8-of-10 from the charity stripe (80%). His 12 field goals made is a career-high, plus he added five rebounds, two steals and two blocks to tie a career-high. Freshman **Lance Rongstad** (G/F, Eleva, Wis.) recorded his first-career double-double with 23 points and a career-high 11 rebounds. Sophomore **Bryce Tesdahl** (G, Crosby, Minn.) continued to quarterback the offense, dishing out eight assists. He has averaged 6.2 assists per game in the five game winning streak and 8.7 in the last three games. His 134 assists this season ranks fifth on BSU's top season assists chart. He added 10 points and six rebounds in the game.

"We are playing our best basketball of the year," said head coach **Matt Bowen**. "Minnesota Duluth was able to cut our lead late in the game, but I felt like our guys never lost their composure or got frustrated. We made play down the stretch to hold on."

The Beavers shot 38 free throws, getting to the line for 30-plus attempts for the fourth consecutive game. BSU didn't shoot their average of 77.4 percent, which stands No. 2 in the nation, but still shot 68.4 percent (26-of-38).

"The way our offense is designed we make a lot of cuts to the basket and get fouled a lot," Bowen said. "That enables us to shoot 30 or more free throws per game."

The Beavers shot well from everywhere else on the floor, going 33-of-57 from the field (57.9%) and 6-of-12 from the 3-point line (50%). The percentage from the field marks the fourth game this season BSU has shot 55 percent or better.

The Beavers never trailed in the game, jumping out to a eight-point lead at 10-2, getting eight points from Haake. The Bulldogs fired back with a 10-3 run to cut the BSU advantage to one at 13-12. The momentum swung back to the Beavers and with 12:02 remaining in the half, the road team had a 12-point lead at 28-16, getting a pair of 3-pointers from Haake from Tesdahl. UMD then went on a 13-6 stretch to cut the deficit to five with 4:28 showing on the clock and the score 34-29. The Beavers used scoring from four different players, four points from junior forward **Patrick Cassidy** (St. Paul, Minn.), to close the half on an 11-5 run, owning a 45-34 lead at the break. Haake had a perfect game going at the half, shooting 6-of-6 from the field, 3-of-3 from downtown and 1-for-1 from the line, scoring 16 points in just 13 minutes of play.

The start of the second half was all BSU as Haake converted the free throw for a three-point play that gave the Beavers their largest lead of the game at 62-40 with 13:38 remaining in the game. The lead stayed in the high-teens to low-twenties for the next five minutes of game time with BSU owning a 78-58 lead with 8:28 showing on the clock. Then UMD's leading scorer, Ryan Rasmussen, who scored 29 against BSU in the game in Bemidji, found his rhythm. After posting just two points in the first half, Rasmussen scored 17-straight Bulldog points to cut the Beaver lead to 10 at 85-75 with 4:13 on the clock. His display was the spark the Bulldogs need and they were able to cut the deficit to four at 89-85 with 1:59 remaining in regulation. Rongstad went to the line on the next BSU possession and was fouled. He made one of two and the lead was back to five with 1:38 left. Rasmussen was fouled on UMD's end and made both his free throws to make it a one possession game at 90-87 with 1:13 showing on the clock. Haake went to the line for BSU with 1:08 left and made just one of two, putting it back to a two-possession match. After a couple of turnovers, Rasmussen missed on a lay-up opportunity and Tesdahl came down with the rebound and was immediately fouled with 43 ticks left. Again, BSU failed to put the game out of reach and made just one of two. Fortunately for the Beavers, UMD and Rasmussen finally went cold and was forced to play the foul game. This time, BSU would go 6-for-6 from the line to close the game and earn the eight-point victory.

Freshman **Burke Lendl** (F, St. Michael, Minn.) made his seventh consecutive start and posted nine rebounds and seven points, with three assists. Cassidy had 13 points and four boards. All five starters played at least 32 minutes and Tesdahl played every minute for the second consecutive contest.

The Beavers finish the regular season Feb. 27 at Wayne State College starting at 6 p.m. With a win, BSU would clinch at least a tie for eighth-place in the final NSIC standings, letting tie breakers decide its post-season fate for the eighth and final-seed of the NSIC tournament.

Bemidji State University, located in Bemidji, Minn., is an NCAA Division II institution and a member of the Northern Sun Intercollegiate Conference (NSIC).

--bsu--

**Brad Folkestad**, Director of Athletic Media Relations • bfolkestad@bemidjistate.edu • 218-755-4603  
**Dax Larson**, Assistant Director of Athletic Media Relations • dlarson@bemidjistate.edu • 218-755-2763  
1500 Birchmont Drive NE #29 • Bemidji, MN 56601-2699 • www.bsubeavers.com